



pearson
ferrier®



27 OAKWOOD GROVE
Manchester, M26 2YL
Offers In The Region Of £210,000

27 OAKWOOD GROVE

Property at a glance

- modern built three storey-town house built by Taylor Wimpey circa 2007
- three generous sized bedrooms (principal bedroom with fitted wardrobes and an en-suite shower room)
- cul-de-sac location
- guest WC/cloaks
- modern fitted kitchen with integrated appliances
- L shaped lounge/diner with access out onto the private rear garden
- modern family bathroom
- off road parking
- viewing a must!!!

Welcome to Oakwood Grove, Radcliffe a beautiful three-bedroom, three-storey mid-town house, built by Taylor Wimpey Homes circa 2007. Nestled in a quiet tucked away cul-de-sac, this home offers a perfect blend of tranquillity and convenience, with Radcliffe Met Station just a short walk away, providing seamless access to Manchester City Centre and beyond. Early viewing is highly recommended to avoid disappointment.

Property Features:

- PVC Double Glazing throughout
- GCH Heating
- Guest WC/Cloaks
- Feature L-shaped lounge/diner with direct access to the private rear garden.
- Modern fitted kitchen with integrated appliances.
- Three generous bedrooms, with the master boasting an en-suite shower room. Both the master and second bedroom include fitted wardrobes.
- Modern and stylish three-piece family bathroom.

Outdoor Features:

- Private rear garden with a raised wooden decked area, perfect for relaxation and entertaining.
- Allocated off-road parking for one car.

Accommodation Layout:

1. **Ground Floor:**

- Hallway
- Guest WC/Cloaks
- Kitchen
- L-shaped lounge/diner

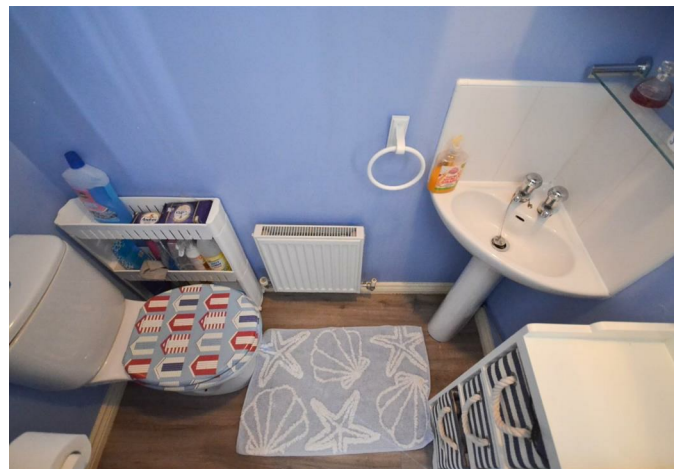
2. **First Floor:**

- Landing area
- Bedrooms two and three
- Family bathroom

3. **Second Floor:**

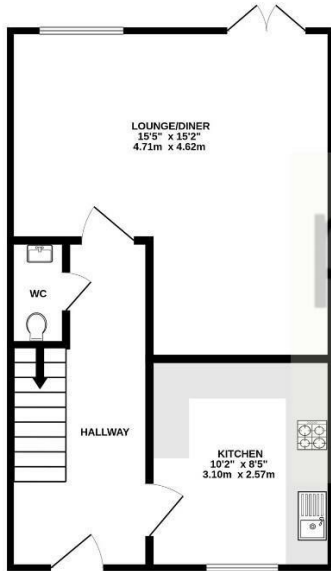
- Principal suite with fitted wardrobes and en-suite shower room

This home is a fantastic opportunity for families or professionals looking for a modern, conveniently located property with ample living space. Book your viewing today!





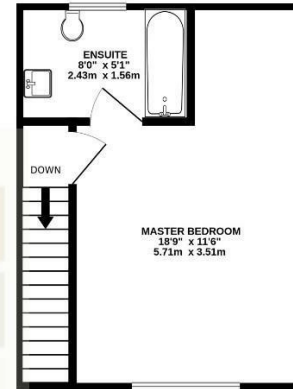
GROUND FLOOR
383 sq.ft. (35.5 sq.m.) approx.



1ST FLOOR
380 sq.ft. (35.3 sq.m.) approx.

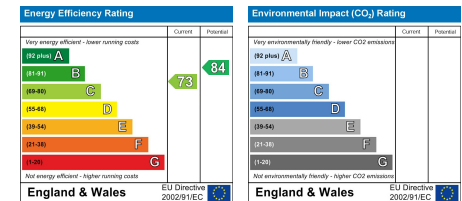


2ND FLOOR
245 sq.ft. (22.7 sq.m.) approx.



TOTAL FLOOR AREA : 1007 sq.ft. (93.5 sq.m.) approx.

Whilst every attempt has been made to ensure the accuracy of the floorplan contained here, measurements of doors, windows, rooms and any other items are approximate and no responsibility is taken for any error, omission or mis-statement. This plan is for illustrative purposes only and should be used as such by any prospective purchaser. The services, systems and appliances shown have not been tested and no guarantee as to their operability or efficiency can be given.
Made with Metropix ©2024



Radcliffe Office
44 Blackburn Street Radcliffe, Manchester, M26 1NQ
Telephone: 0161 725 8155
Fax: #
Email: radcliffe@pearsonferrier.co.uk

www.pearsonferrier.co.uk



All statements contained in these particulars are for indicative purposes only and are made without responsibility on the part of Pearson Ferrier and the vendors of this property and are not to be relied on as statements or representations of fact. Potential purchasers should satisfy themselves by inspection or otherwise as to the accuracy of such details contained in these particulars.