



pearson  
ferrier®



23 ASHWOOD DRIVE  
Bury, BL8 1HF  
£200,000



# 23 ASHWOOD DRIVE

## Property at a glance

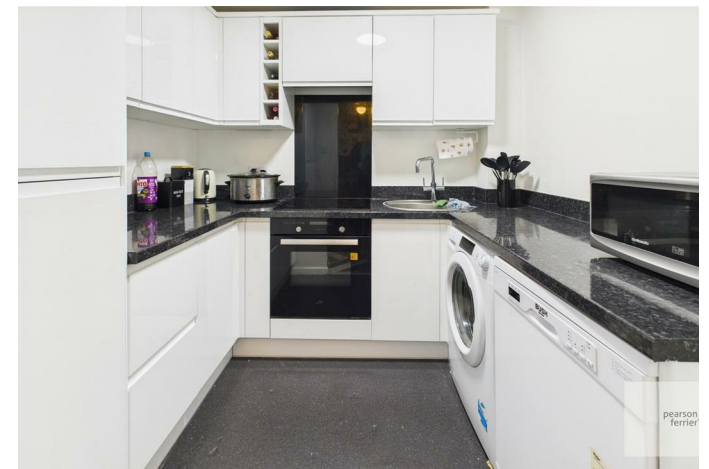
- MID TOWN HOUSE
- THREE BEDROOMS
- LOUNGE/DINER & CONSERVATORY
- CUL-DE-SAC
- CONVENIENT LOCATION
- CLOSE TO KIRKLEES NATURE TRAIL

FREEHOLD three bedroom town house located in a cul-de-sac in the ever popular Brandlesholme area of Bury. The location offers excellent access and transport links to Bury & Ramsbottom town centres, with local primary schools, handy parade of shops, being close by, yet with the Kirklees Nature trail and Burrs Country Park being only a short walk. In brief the property comprises of; Porch, lounge opening into the dining area, kitchen and conservatory. To the first floor are three bedrooms (two being double) and contemporary shower room. The property benefits from block paved driveway to the front and an enclosed garden to the rear and is ideal for both first time buyers or growing families.

Tenure - Freehold

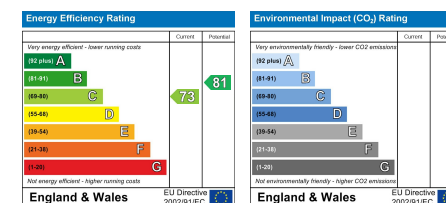
EPC-C

Council Tax band - B









Bury Office  
435/7 Walmersley Road, Bury, Lancashire, BL9 5EU  
Telephone: 0161 764 4440  
Fax: #  
Email: bury@pearsonferrier.co.uk

[www.pearsonferrier.co.uk](http://www.pearsonferrier.co.uk)



All statements contained in these particulars are for indicative purposes only and are made without responsibility on the part of Pearson Ferrier and the vendors of this property and are not to be relied on as statements or representations of fact. Potential purchasers should satisfy themselves by inspection or otherwise as to the accuracy of such details contained in these particulars.