



pearson  
ferrier®



2 BROOK WALK

Bury, BL8 1WF

Offers In The Region Of £277,000



## 2 BROOK WALK

### Property at a glance

- Three double bedrooms
- Additional office space
- Freehold end town house
- Views over Kirklees valley
- Close to Bury & Ramsbottom
- Tranquil countryside setting
- Spacious garden at rear & side
- garage & driveway

Well presented FREEHOLD end town house with three double bedroom + additional office situated on the on the Miller Brook development in Tottington with views to the front over Kirklees valley, . The location offers excellent access to Bury & Ramsbottom town centres with local shops and schools being close by yet being set in a beautiful and tranquil location with local countryside and Kirklees Nature trail being on your doorstep. In brief the property comprises of; Entrance hall, lounge, kitchen/diner and guest w.c to the ground floor, To the 1st floor is a landing two double bedrooms, family bathroom and office/dressing room with stairs to the main bedroom (which is over 19ft) and also benefits from an ensuite). Externally there is off road parking for 2 cars which leads to a garage and to the rear to a spacious garden to the rear.

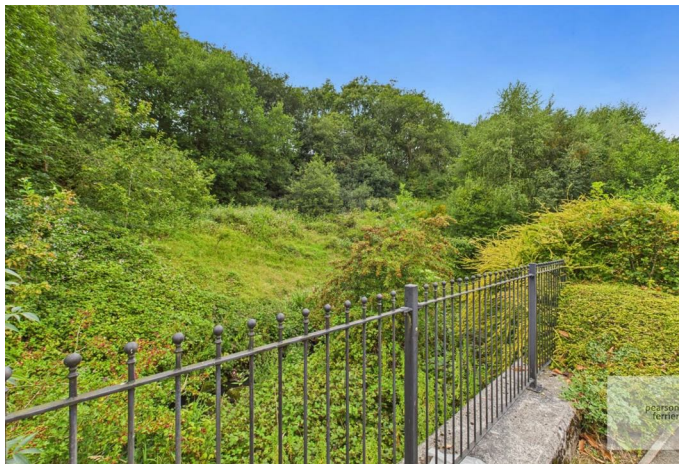
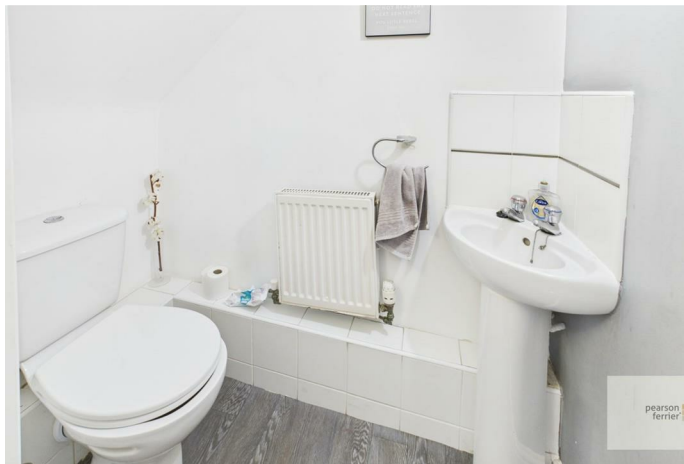
Tenure - Freehold

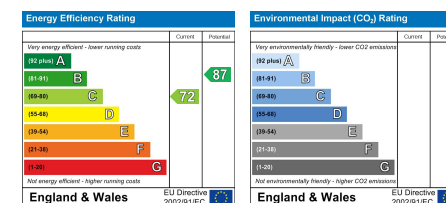
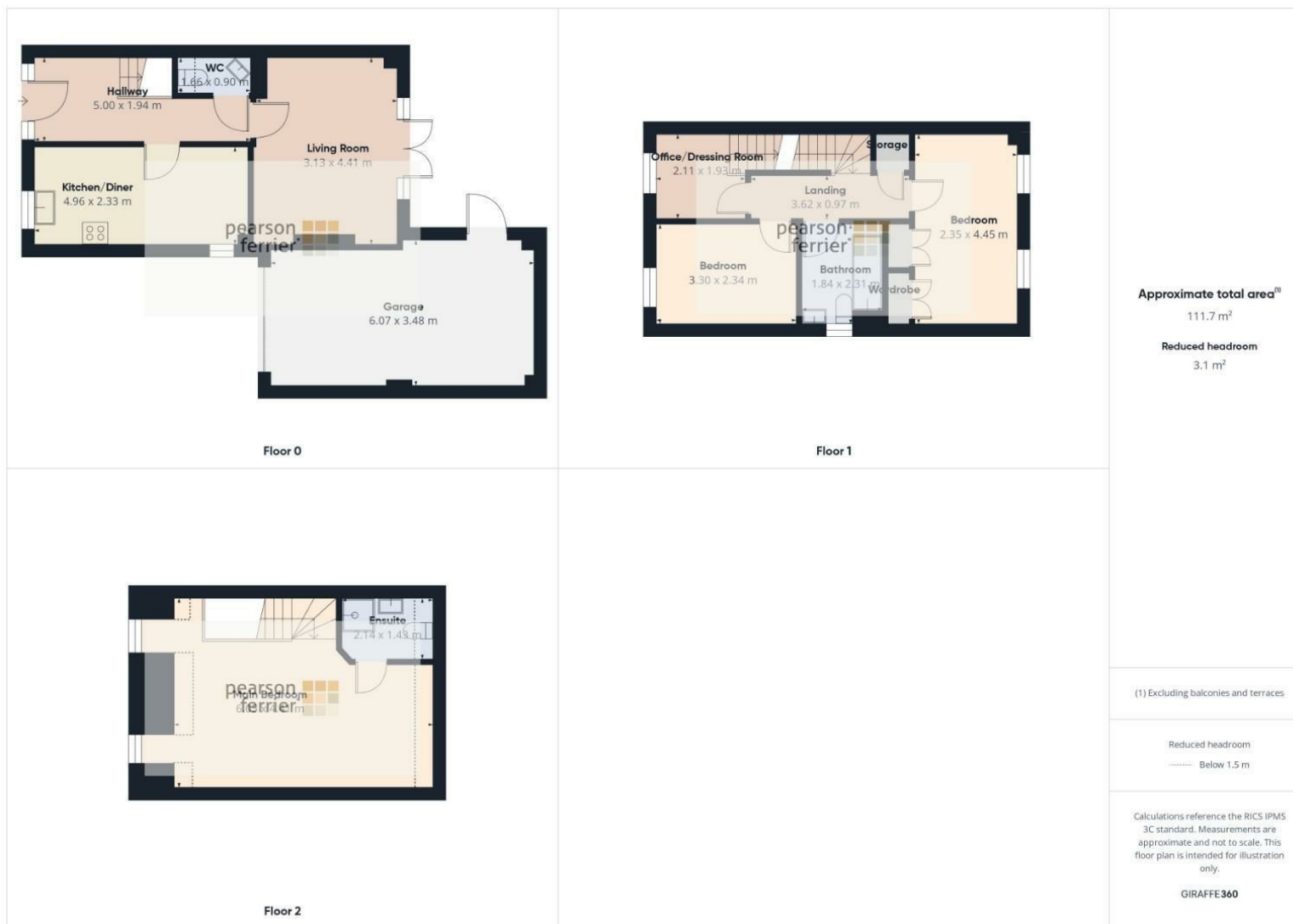
Council Tax Band - C

EPC - C









Bury Office  
435/7 Walmersley Road, Bury, Lancashire, BL9 5EU  
Telephone: 0161 764 4440  
Fax: #  
Email: bury@pearsonferrier.co.uk

[www.pearsonferrier.co.uk](http://www.pearsonferrier.co.uk)



All statements contained in these particulars are for indicative purposes only and are made without responsibility on the part of Pearson Ferrier and the vendors of this property and are not to be relied on as statements or representations of fact. Potential purchasers should satisfy themselves by inspection or otherwise as to the accuracy of such details contained in these particulars.