



pearson
ferrier®



17 BEVIS GREEN
Bury, BL9 6RQ
£850 Per Calendar Month

17 BEVIS GREEN

Property at a glance

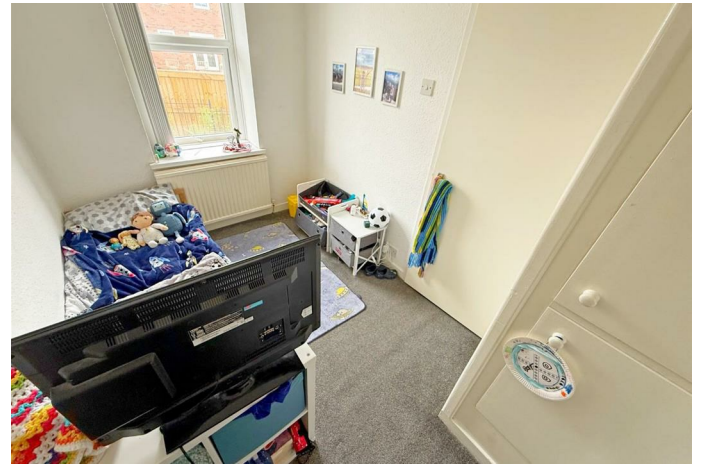
- STONE BUILT COTTAGE
- GOOD RESIDENTIAL AREA
- TWO BEDROOMS
- UPVC DOUBLE GLAZING
- FULLY FITTED KITCHEN
- VIEWING RECOMMENDED
- AVAILABLE JULY 2025

AVAILABLE JULY 2025 A beautiful stone built end terraced cottage, a short distance from Walmersley Road with good local amenities, bus routes, schools and motorway access. The cottage is warmed by gas fired central heating and is double glazed throughout. Internally there is a entrance vestibule leading through to the lounge and a good size fully fitted kitchen which has been recently installed. To the first floor there are two bedrooms and a bathroom with shower over bath. Externally there is a garden forecourt and a rear yard which extends round the side of the property.

Council Tax Band B & EPC Rating D

Please note that you will be required to pay a Holding Deposit (equivalent to one weeks rent) to secure the property.





Bury Office
435/7 Walmersley Road, Bury, Lancashire, BL9 5EU
Telephone: 0161 764 4440
Fax: #
Email: bury@pearsonferrier.co.uk

www.pearsonferrier.co.uk

All statements contained in these particulars are for indicative purposes only and are made without responsibility on the part of Pearson Ferrier and the vendors of this property and are not to be relied on as statements or representations of fact. Potential purchasers should satisfy themselves by inspection or otherwise as to the accuracy of such details contained in these particulars.

