



pearson
ferrier®



4 CASTLE HEY CLOSE
Bury, BL9 8JQ
£549,950

4 CASTLE HEY CLOSE

Property at a glance

- SUBSTANTIAL FREEHOLD MODERN DETACHED PROPERTY
- GREAT LOCATION IN UNSWORTH
- LOCATED ON CUL-DE-SAC OF SIMILAR HOMES
- FOUR/FIVE BEDROOMS (TWO FITTED & MAIN ENSUITE)
- FABULOUS DINING KITCHEN WITH CENTRE ISLAND
- CONVERTED TWIN GARAGE SO ADAPTABLE ACCOMMODATION
- CONTEMPORARY FITTINGS THROUGHOUT
- GARDENS TO FRONT & REAR
- ON SITE PARKING

A substantial FREEHOLD modern detached family home located in Unsworth, Bury, more or less midway between Whitefield and Bury town centres. The property is situated on a highly desirable cul-de-sac of similar calibre homes and is being offered for sale with no onward chain. Beautifully appointed throughout and having the benefit of a converted twin garage which has now created very adaptable living space. With gas central heating and upvc double glazing the accommodation briefly comprises: entrance hall, lounge with contemporary living flame fire, expansive dining kitchen with bi-folding doors leading onto the rear gardens, utility room, ground floor w.c., ground floor bedroom and sitting room, first floor landing, four bedrooms (the master with very contemporary ensuite and ultra modern principal family bathroom). To the outside there are gardens to the front and rear and a block paved driveway providing on site parking for up to four cars.

Tenure - Freehold
Council Tax Banding - E
EPC Rating - D

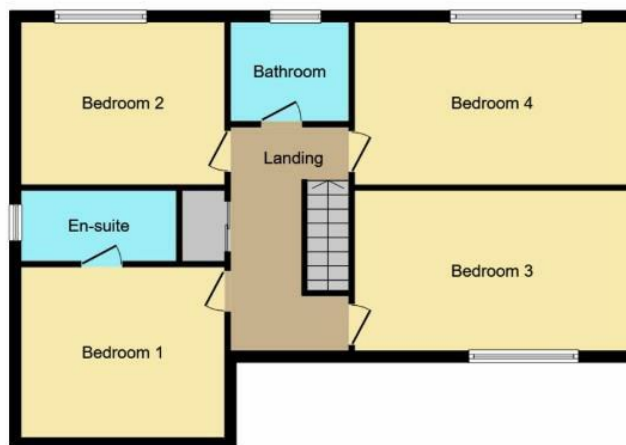




4 Castle Hey Close, Bury, BL9 8JQ



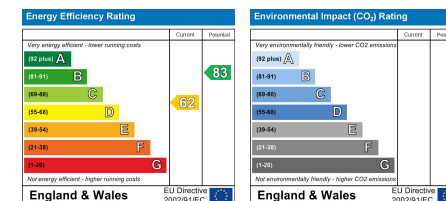
Ground Floor
Floor area 79.5 sq.m. (856 sq.ft.)



First Floor
Floor area 79.5 sq.m. (856 sq.ft.)

TOTAL: 159.0 sq.m. (1,712 sq.ft.)

This floor plan is for illustrative purposes only. It is not drawn to scale. Any measurements, floor areas (including any total floor area), openings and orientations are approximate. No details are guaranteed, they cannot be relied upon for any purpose and do not form any part of any agreement. No liability is taken for any error, omission or misstatement. A party must rely upon its own inspection(s). Powered by www.Propertybox.io



Bury Office
435/7 Walmersley Road, Bury, Lancashire, BL9 5EU
Telephone: 0161 764 4440
Fax: #
Email: bury@pearsonferrier.co.uk

www.pearsonferrier.co.uk



All statements contained in these particulars are for indicative purposes only and are made without responsibility on the part of Pearson Ferrier and the vendors of this property and are not to be relied on as statements or representations of fact. Potential purchasers should satisfy themselves by inspection or otherwise as to the accuracy of such details contained in these particulars.