



pearson
ferrier®



171 LIMEFIELD BROW
Bury, BL9 6QQ
£150,000

171 LIMEFIELD BROW

Property at a glance

- MID TOWN HOUSE
- TWO DOUBLE BEDROOMS
- RECENTLY REFURBISHED
- NEW KITCHEN & BATHROOM
- FREEHOLD
- NO ONWARD CHAIN
- IDEAL FIRST TIME BUY

A recently refurbished two double bedroom, FREEHOLD townhouse on a quiet cul-de-sac in the Limefield area of Bury just off Walmersley Road. The location offers excellent access to both Bury & Ramsbottom centres, with local shops schools and open countryside being within walking distance, yet junction 1 M66 being only a short drive. The property is an ideal first time buy and has recently been refurbished including new kitchen, bathroom, decoration and flooring throughout. In brief the property comprises of; Entrance hall, lounge opening into the dining/kitchen. To the first floor are two double bedrooms and family bathroom with separate w.c with an enclosed garden to the rear.

Freehold

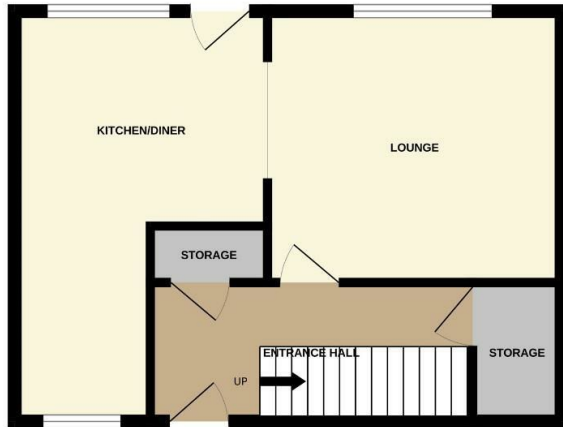
EPC - tbc

Council Tax Band - A





GROUND FLOOR
405 sq.ft. (37.7 sq.m.) approx.

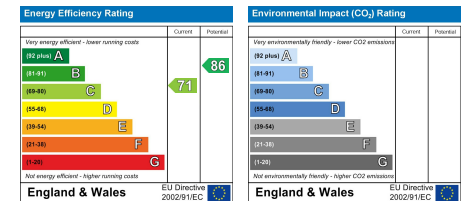


FIRST FLOOR
405 sq.ft. (37.7 sq.m.) approx.



TOTAL FLOOR AREA: 811 sq.ft. (75.3 sq.m.) approx.

Whilst every attempt has been made to ensure the accuracy of the floorplan contained here, measurements of doors, windows, rooms and any other items are approximate and no responsibility is taken for any error, omission or mis-statement. This plan is for illustrative purposes only and should be used as such by any prospective purchaser. The services, systems and appliances shown have not been tested and no guarantee as to their operability or efficiency can be given.
Made with Metropix ©2024



Bury Office
435/7 Walmsley Road, Bury, Lancashire, BL9 5EU
Telephone: 0161 764 4440
Fax: #
Email: bury@pearsonferrier.co.uk

www.pearsonferrier.co.uk



All statements contained in these particulars are for indicative purposes only and are made without responsibility on the part of Pearson Ferrier and the vendors of this property and are not to be relied on as statements or representations of fact. Potential purchasers should satisfy themselves by inspection or otherwise as to the accuracy of such details contained in these particulars.