



pearson
ferrier®



LAND & BUILDINGS WOOLEY LANE
Accrington, BB5 2EA
Auction Guide £250,000

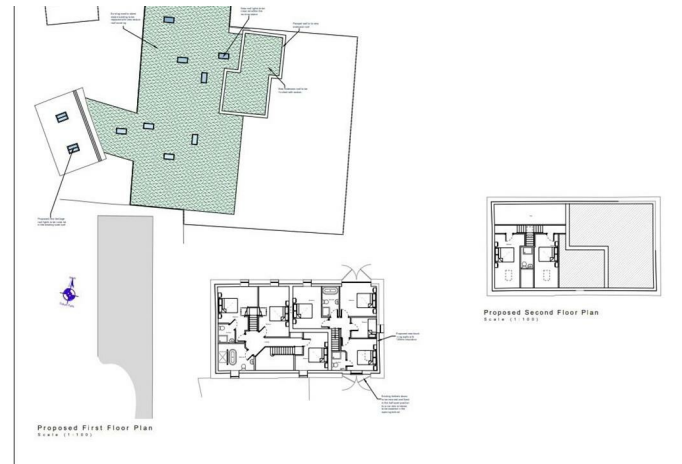
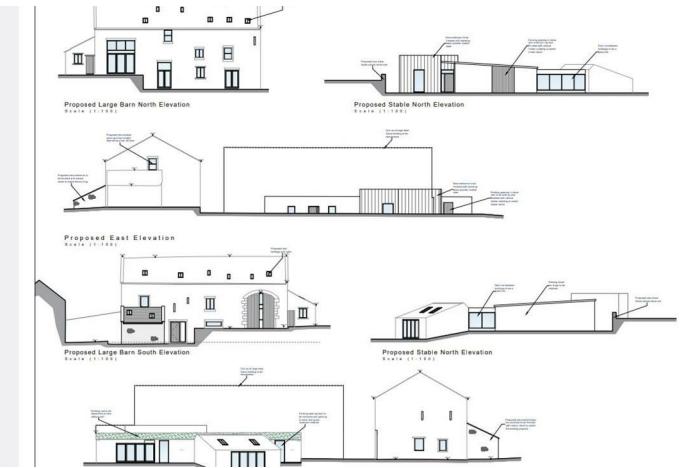
LAND & BUILDINGS WOOLEY LANE

Property at a glance

- PLANNING PASSED FOR FOUR RESIDENTIAL PROPERTIES
- GUIDE PRICE £250,000 - £300,000
- A PAIR OF 4 BEDROOM PROPERTIES AND A PAIR OF 3 BEDROOM PROPERTIES
- PLANNING CAN BE VIEWED ON HYNDBURN COUNCIL WEBSITE REF 11/23/0523
- STUNNING RURAL LOCATION
- CLOSE TO BAXENDEN GOLF CLUB

For sale via Pearson Ferrier Auctions starting Tuesday 10th September, bidding will be on the Pearson Ferrier website and you can register to bid now. An ideal development opportunity for a developer or builder. The site is in a semi rural location in Baxenden with outstanding countryside views. The plans comprise two four bedroom homes and two three bedroom homes. Full details on the planning can be found on the Hyndburn council website under ref 11/23/0523. The site measures just over 0.5 acres. Although the site is situated in a semi rural location close to Baxenden golf club, it has good access to the A56 which links to both the M66 and M65 motorways. Viewings are recommended to appreciate the size of the plot and the location. For viewings please contact Pearson Ferrier on 0161 764 4440. Auction guide price £250,000 - £300,000. Buyers are advised to check the legal pack before bidding, this will be available on the Pearson Ferrier website via the bidding window on the property when available. Any changes to the details will be updated on the Pearson Ferrier website before the auction.





Bury Office
 435/7 Walmersley Road, Bury, Lancashire, BL9 5EU
 Telephone: 0161 764 4440
 Fax: #
 Email: bury@pearsonferrier.co.uk

www.pearsonferrier.co.uk

All statements contained in these particulars are for indicative purposes only and are made without responsibility on the part of Pearson Ferrier and the vendors of this property and are not to be relied on as statements or representations of fact. Potential purchasers should satisfy themselves by inspection or otherwise as to the accuracy of such details contained in these particulars.

