



pearson
ferrier®



47 CLIFTON ROAD
Prestwich, M25 3HG
Offers Over £325,000

47 CLIFTON ROAD

Property at a glance

- FREEHOLD END TERRACE PROPERTY
- THREE BEDROOMS
- PRESTWICH VILLAGE LOCATION
- TWO RECEPTION ROOMS
- CELLAR
- NO ONWARD CHAIN
- IDEAL FAMILY HOME

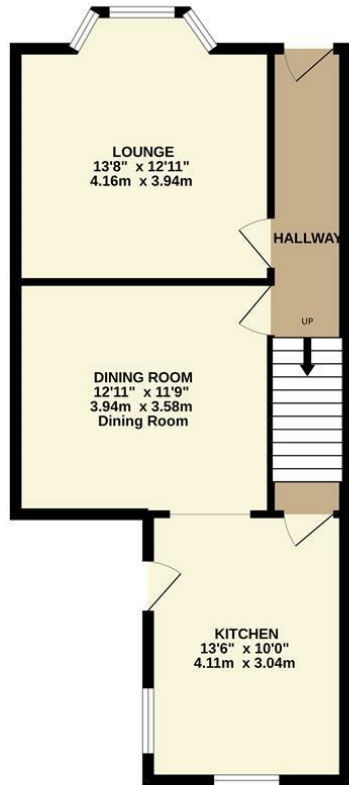
Nestled in the charming Clifton Road of Prestwich, Manchester, this immaculately presented end terraced house is a true gem waiting to be discovered. Boasting three bedrooms and two reception rooms, this property offers the perfect blend of space and comfort for a growing family. The prime location of this house provides unparalleled convenience, with excellent access and transport links to Manchester City centre. Just a short stroll away from the Metrolink, shops, bars, and restaurants, you'll find yourself at the heart of the vibrant Prestwich village community. Not to mention, the proximity to the picturesque clough adds a touch of tranquillity to this bustling location. Step inside, and you'll be greeted by an deceptively spacious family home that has been lovingly maintained. The open plan kitchen/diner with multi fuel fire perfect for hosting gatherings and creating lasting memories with loved ones. Imagine preparing delicious meals while still being able to engage with guests in the adjoining dining area. As you make your way outside, a charming southerly facing garden awaits, offering a peaceful retreat where you can unwind after a long day or enjoy a morning coffee in the fresh air. Don't miss out on the opportunity to make this delightful property your new home. With its ideal location, ample living space, and inviting atmosphere, this end terraced house on Clifton Road is sure to capture your heart.

Freehold
Council Tax Band - B
EPC-D

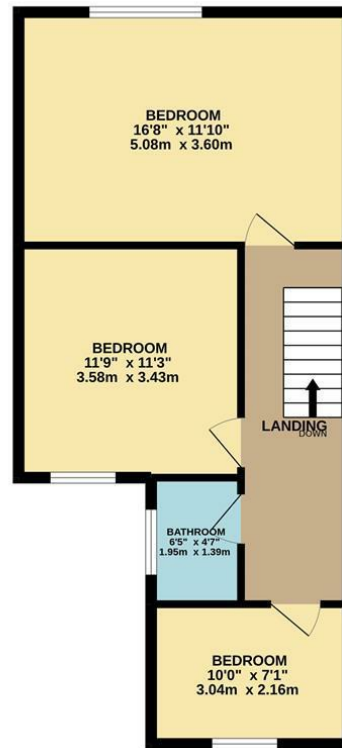




GROUND FLOOR
538 sq.ft. (49.9 sq.m.) approx.

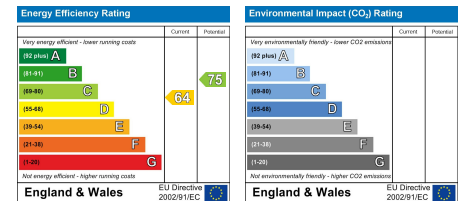


FIRST FLOOR
527 sq.ft. (48.9 sq.m.) approx.



TOTAL FLOOR AREA: 1064 sq.ft. (98.9 sq.m.) approx.

While every attempt has been made to ensure the accuracy of the floorplan contained here, measurements of doors, windows, rooms and any other items are approximate and no responsibility is taken for any error, omission or mis-statement. This plan is for illustrative purposes only and should be used as such by any prospective purchaser. The services, systems and appliances shown have not been tested and no guarantee as to their operability or efficiency can be given.
Made with Metropix ©2022.



Bury Office
435/7 Walmsley Road, Bury, Lancashire, BL9 5EU
Telephone: 0161 764 4440
Fax: #
Email: bury@pearsonferrier.co.uk

www.pearsonferrier.co.uk



All statements contained in these particulars are for indicative purposes only and are made without responsibility on the part of Pearson Ferrier and the vendors of this property and are not to be relied on as statements or representations of fact. Potential purchasers should satisfy themselves by inspection or otherwise as to the accuracy of such details contained in these particulars.