



pearson
ferrier®



15 TRIMINGHAM DRIVE
Bury, BL8 1JW
£500,000

15 TRIMINGHAM DRIVE

Property at a glance

- SPACIOUS FAMILY HOME EXTENDED ON TWO FLOORS
- FIVE BEDROOMS (MASTER EN SUITE)
- BACKING ON TO BURRS COUNTRY PARK
- LARGE REAR GARDEN
- POPULAR FAMILY LOCATION WITH GOOD AMENITIES
- VIEWING ESSENTIAL TO APPRECIATE THE SIZE & CONDITION

An ideal family home, extended on two floors and having a large rear garden backing on to Burrs Country Park. This five bedroom detached property is located just off Brandlesholme Road in the BL8 area with a wide range of local amenities for families including schools, shops, countryside walks and pubs. The property is a real credit to it's current owners and comprises five bedrooms (master with en suite), large four piece family bathroom, lounge, an impressive kitchen/diner, utility room, downstairs W.C. and an integral garage. To the front of the property there is a driveway for multiple vehicles, and to the rear there is a large garden area with a gate leading in to Burrs Country Park. If you are looking for a spacious family home with an abundance of outside space in walk in condition, then this property should be on your to view list.

Tenure - Freehold with a small part of the garden leasehold on a long lease

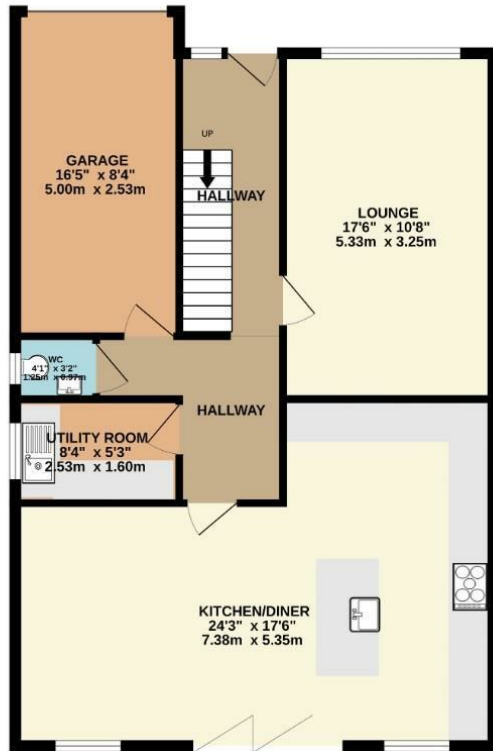
EPC - C

Council Tax - E

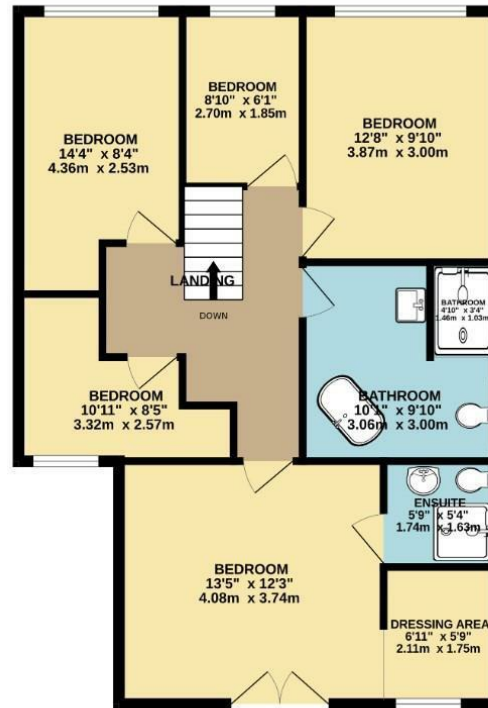




GROUND FLOOR
866 sq.ft. (80.4 sq.m.) approx.

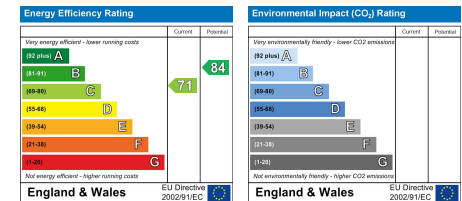


1ST FLOOR
786 sq.ft. (73.0 sq.m.) approx.



TOTAL FLOOR AREA: 1651 sq.ft. (153.4 sq.m.) approx.

Whilst every attempt has been made to ensure the accuracy of the floorplan contained here, measurements of doors, windows, rooms and any other items are approximate and no responsibility is taken for any error, omission or mis-statement. This plan is for illustrative purposes only and should be used as such by any prospective purchaser. The services, systems and appliances shown have not been tested and no guarantee as to their operability or efficiency can be given.
Made with Metropix ©2024



Bury Office
435/7 Walmsley Road, Bury, Lancashire, BL9 5EU
Telephone: 0161 764 4440
Fax: #
Email: bury@pearsonferrier.co.uk

www.pearsonferrier.co.uk



All statements contained in these particulars are for indicative purposes only and are made without responsibility on the part of Pearson Ferrier and the vendors of this property and are not to be relied on as statements or representations of fact. Potential purchasers should satisfy themselves by inspection or otherwise as to the accuracy of such details contained in these particulars.