



pearson
ferrier®



37 THE SIDINGS
Bury, BL9 0UH
£145,000

37 THE SIDINGS

Property at a glance

- SECOND FLOOR APARTMENT
- TWO DOUBLE BEDROOMS
- BURY TOWN CENTRE
- CLOSE TO METROLINK & BUS STATION
- IDEAL FIRST TIME BUY OR BUY TO LET INVESTMENT
- NO ONWARD CHAIN

Well presented two double bedroom 2nd floor apartment located in the centre of Bury which has all shops and amenities being close by with the Metrolink and bus station literally being on your doorstep. The property is an ideal first time buy or buy to let investment and briefly comprises of; Entrance hall, lounge, kitchen, two double bedrooms and family bathroom and allocated parking space.

Leasehold - 999yrs from 1st January 2002

Ground Rent - £125 per year

Service Charge - £96 per month

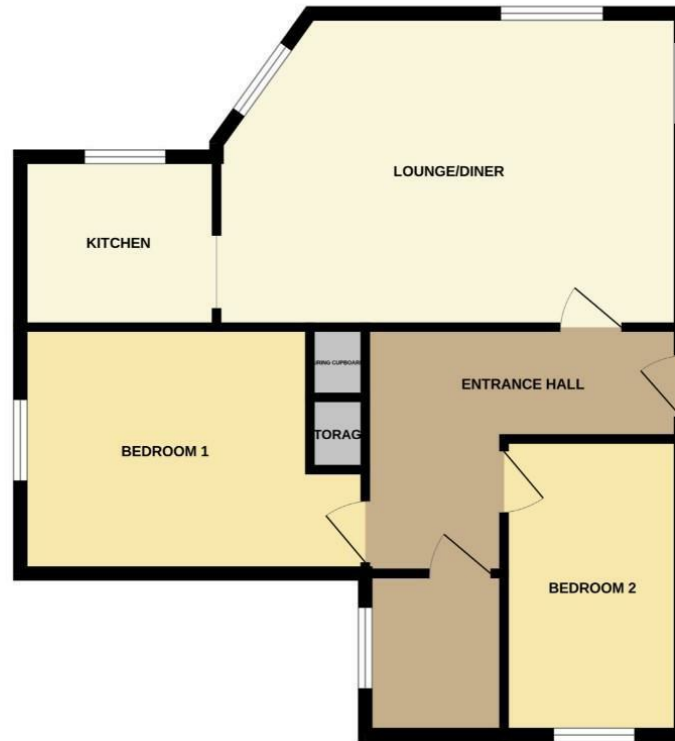
Council Tax - A

EPC-C

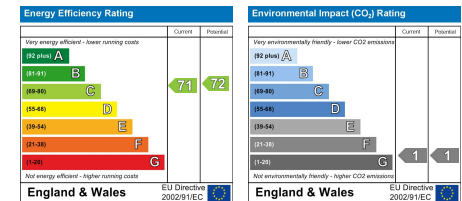




GROUND FLOOR
647 sq.ft. (60.1 sq.m.) approx.



TOTAL FLOOR AREA: 647 sq ft. (60.1 sq m.) approx.
Whilst every attempt has been made to ensure the accuracy of the floorplan contained here, measurements of doors, windows, rooms and any other items are approximate and no responsibility is taken for any error, omission or mis-statement. This plan is for illustrative purposes only and should be used as such by any prospective purchaser. The services, systems and appliances shown have not been tested and no guarantee as to their operability or efficiency can be given.
Made with Metropix v2024.



Bury Office
435/7 Walmersley Road, Bury, Lancashire, BL9 5EU
Telephone: 0161 764 4440
Fax: #
Email: bury@pearsonferrier.co.uk

www.pearsonferrier.co.uk



All statements contained in these particulars are for indicative purposes only and are made without responsibility on the part of Pearson Ferrier and the vendors of this property and are not to be relied on as statements or representations of fact. Potential purchasers should satisfy themselves by inspection or otherwise as to the accuracy of such details contained in these particulars.