



pearson ferrier  
**BLACK LABEL**

**MEADOWCROFT FARM**  
Bury, BL8 3PD  
£625,000

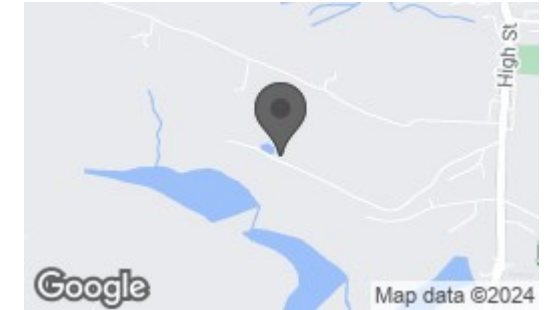
## Meadowcroft Farm, Lowercroft, Bury, BL8 3PD

Construction and renovation has now commenced on Home Barn at Meadowcroft Farm off Lowercroft Road in Bury. The barn is one of 5 dwellings on what was originally a working farm but over the last few years has been transformed into a small hamlet of highly desirable individually designed homes. This is perhaps a once in a lifetime opportunity, to live in a true barn conversion in a secluded private position, surrounded by greenbelt land with far reaching views, completion of the works is scheduled for the end of 2024. The developers are offering an opportunity for the buyers to chose their own finishings. Please note the images displayed are computer generated and are for illustrative purposes only.

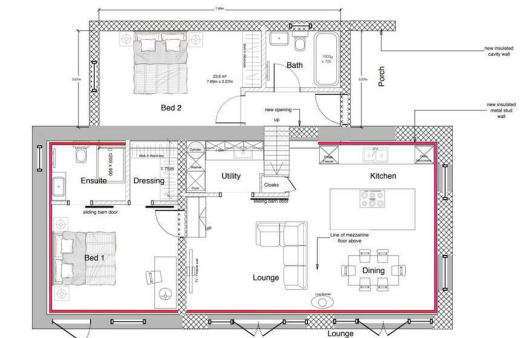
Tenure - Freehold  
Council Tax tbc  
EPC tbc



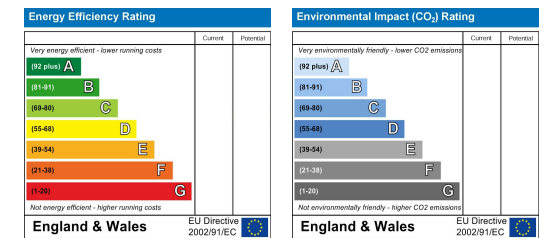
## Area Map



## Floor Plan



## Energy Efficiency Graph



Bury Office  
435/7 Walmersley Road, Bury, Lancashire, BL9 5EU  
Telephone: 0161 764 4440  
Fax: #  
Email: bury@pearsonferrier.co.uk

[www.pearsonferrier.co.uk](http://www.pearsonferrier.co.uk)

All statements contained in these particulars are for indicative purposes only and are made without responsibility on the part of Pearson Ferrier and the vendors of this property and are not to be relied on as statements or representations of fact. Potential purchasers should satisfy themselves by inspection or otherwise as to the accuracy of such details contained in these particulars.

