



pearson
ferrier®



LAND BETWEEN ROCHDALE OLD ROAD &

WILSON ROAD, BURRY, BL9 7LS

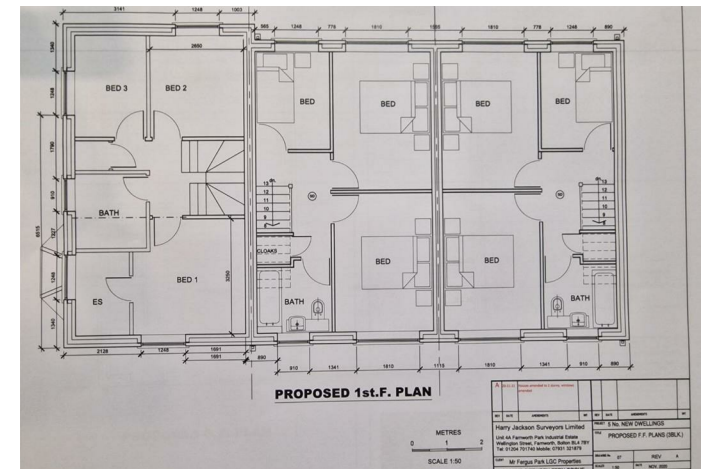
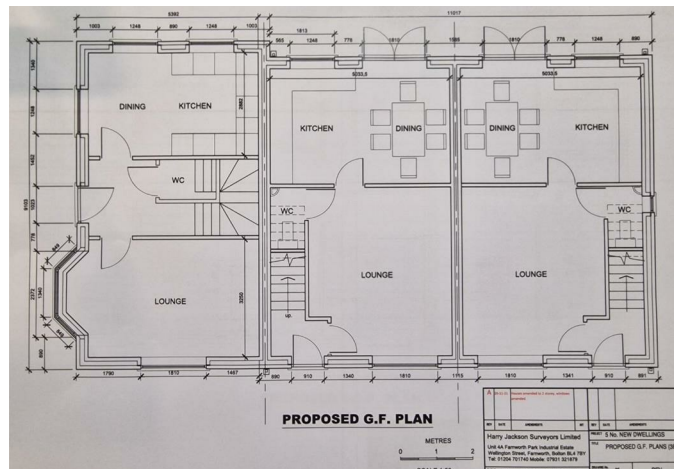
£279,000

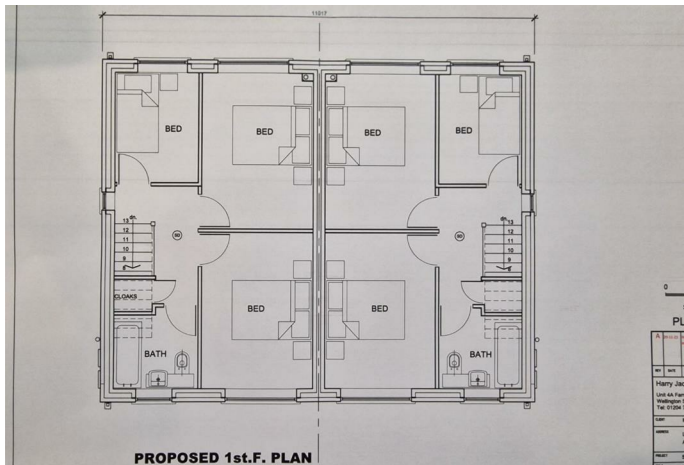
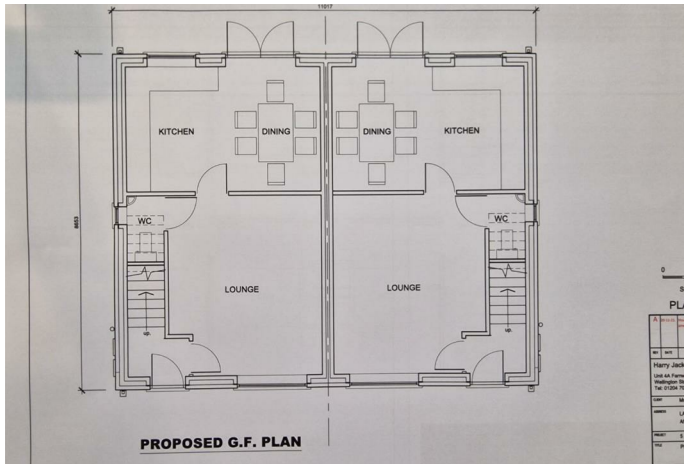
LAND BETWEEN ROCHDALE OLD ROAD & WOODGATE HILL

ROAD

Property at a glance

Land with planning passed for five, three bedroom properties located off Woodgate Hill Road which is just off Rochdale Old Road close to Fairfield Hospital and offering great access to the M66 motorway and Bury town centre. Planning has been passed for five properties which are all three bedrooms and are set in a block of three and a pair of semi detached properties. Any interested parties are advised to check the planning details on the Bury Council website under ref: 68884. There are a good amount of local amenities including shops, schools and Fairfield Hospital. The land is located just off the main arterial route between Bury & Rochdale centres with good public transport links and access to the M66 motorway.





Bury Office
 435/7 Walmsley Road, Bury, Lancashire, BL9 5EU
 Telephone: 0161 764 4440
 Fax: #
 Email: bury@pearsonferrier.co.uk

www.pearsonferrier.co.uk

All statements contained in these particulars are for indicative purposes only and are made without responsibility on the part of Pearson Ferrier and the vendors of this property and are not to be relied on as statements or representations of fact. Potential purchasers should satisfy themselves by inspection or otherwise as to the accuracy of such details contained in these particulars.

