

FOR SALE

Fern 10, Valley View Holiday Park Pentrebeirdd, Guilsfield, Welshpool, Powys, SY21 9DL

Halls 1845



FOR SALE

Offers in the region of £30,000

Fern 10, Valley View Holiday Park Pentrebeirdd, Guilsfield, Welshpool, Powys, SY21 9DL

Property to sell? We would be delighted to provide you with a free no obligation market assessment of your existing property. Please contact your local Halls office to make an appointment. **Mortgage/financial advice.** We are able to recommend a completely independent financial advisor,

who is authorised and regulated by the FCA. Details can be provided upon request. **Do you require a surveyor?** We are able to recommend a completely independent chartered surveyor. Details can be provided upon request.

Halls 1845

01938 555 552

Welshpool Sales
14 Broad Street, Welshpool, Powys, SY21 7SD
E: welshpool@hallsgb.com



OnTheMarket.com



IMPORTANT NOTICE: Halls Holdings Ltd and any joint agents for themselves, and for the Vendor of the property whose Agents they are, give notice that: (i) These particulars are produced in good faith, are set out as a general guide only and do not constitute any part of a contract (ii) No person in the employment of or any agent of or consultant to Halls Holdings has any authority to make or give any representation or warranty whatsoever in relation to this property (iii) Measurements, areas and distances are approximate, Floor plans and photographs are for guidance purposes only (photographs are taken with a wide angled / zoom lenses) and dimensions shapes and precise locations may differ (iv) It must not be assumed that the property has all the required planning or building regulation consents. Halls Holdings, Bowmen Way, Shrewsbury, Shropshire SY4 3DR. Registered in England 06597073.



hallsgb.com

Residential / Fine Art / Rural Professional / Auctions / Commercial

hallsgb.com

01938 555 552



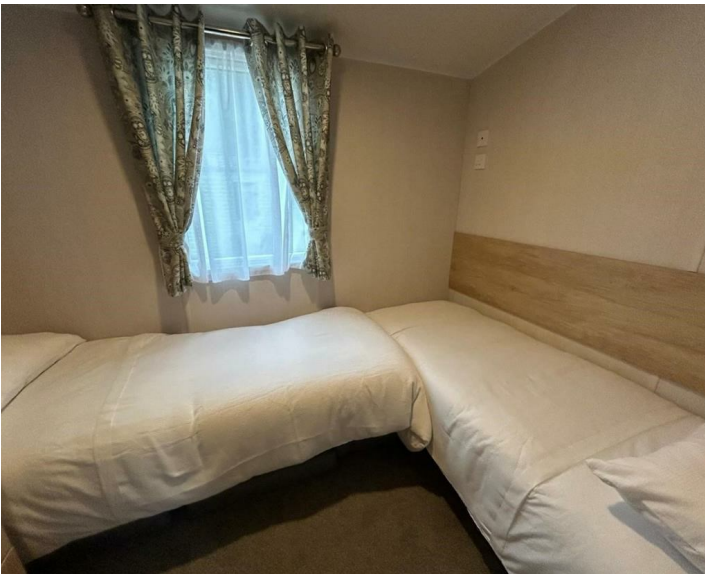
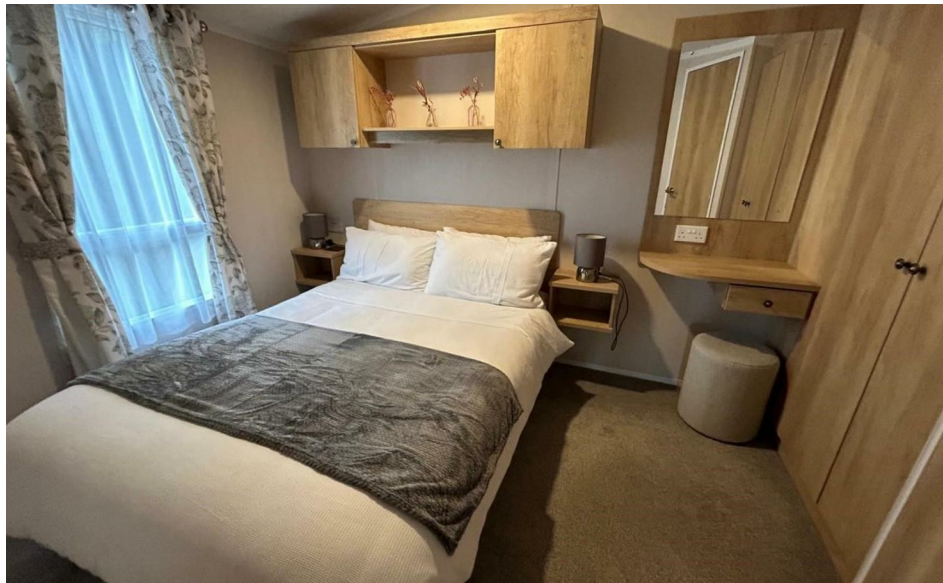
1 Reception
Room/s



2 Bedroom/s



2 Bath/Shower
Room/s



- Viewing Highly Recommended
- Stunning Six Berth Caravan
- Gas Central Heating
- Open Plan Living Area
- 16 Years Lease
- Lovely Park and Countryside Views

Frosted Double Glazed Entrance Door
Leading to

Open Plan Living Area
19'6 x 11'8

Kitchen/Dining Area
Fitted with a range of wall and base units with laminate work surfaces, stainless steel sink drainer unit, mixer tap, gas hob and oven, extractor canopy, integrated fridge/freezer, cupboard housing gas boiler, integrated microwave, double glazed window to either side, radiator, dining table and four chairs.

Lounge Area
With electric feature fire with decorative surround, television and display cabinet, L shaped sofa, double glazed window to either elevation, double glazed picture windows to the front with views across the park and along the valley.

Master Bedroom
9'8 max measurement x 8'5
Built in wardrobe, bedside tables, storage cupboard, dressing table, double bed, radiator, double glazed window to the side elevation.

W.C.
Pedestal wash hand basin, low level W.C., double glazed window to the side elevation, display shelving, radiator.

Bedroom Two
8'6 x 5'9
Built in wardrobe, twin beds, display shelving, double glazed window to the side elevation, radiator.

Shower Room
With walk in double shower, pedestal wash hand basin, low level W.C., heated towel rail, frosted double glazed window to the side elevation, mirrored vanity unit, display shelving and extractor fan.

Externally
The caravan has blocked paved parking area with steps leading up to composite decking and making an ideal entertaining space, storage unit.

Agents Notes
We have been advised that the property has 16 years remaining on its lease. The site fees payable per annum are £3580. This caravan is strictly holiday use only for 10 months of the year.

Services
Mains electricity, water and gas central heating are connected at the property. None of these services have been tested by Halls.

Viewing
Strictly by appointment only with the selling agents:
Halls, 14 Broad Street, Welshpool, Powys, SY21 7SD.
Tel No: 01938 555552.
Email: welshpool@hallsgb.com

Directions
Postcode for the property is SY21 9DL

What3Words Reference is ///witty.decoded.print

Money Laundering
We will require evidence of your ability to proceed with the purchase, if the sale is agreed to you. The successful purchaser will be required to produce adequate identification to prove their identity within the terms of the Money Laundering Regulations (MLR 2017 which came into force 26th June 2017)). Appropriate examples: Passport and/or photographic driving licence and a recent utility bill.

Websites
Please note all of our properties can be viewed on the following websites:
www.hallsgb.com
www.rightmove.co.uk
www.onthemarket.com