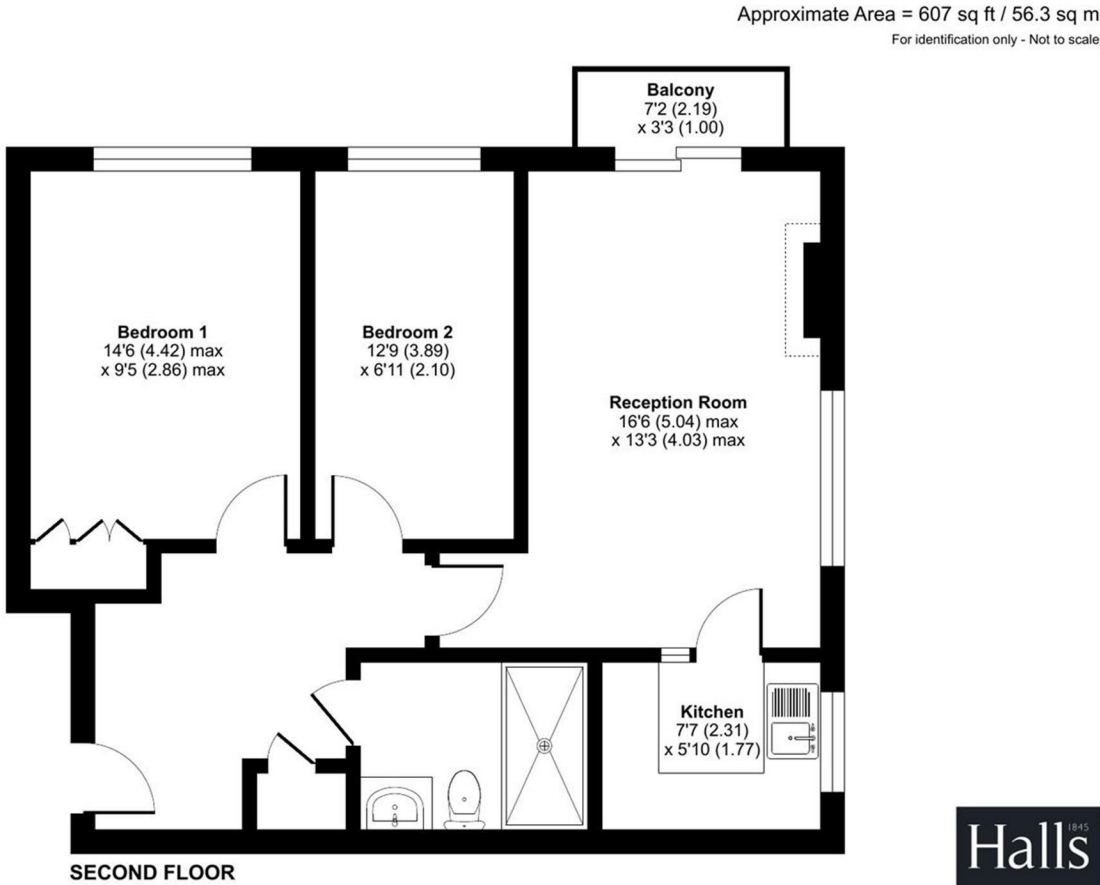


FOR SALE

Flat 213 The Cedars, Abbey Foregate, Shrewsbury, SY2 6BY



Floor plan produced in accordance with RICS Property Measurement 2nd Edition, Incorporating International Property Measurement Standards (IPMS2 Residential). © nrichcom 2025. Produced for Halls. REF: 1347144



FOR SALE

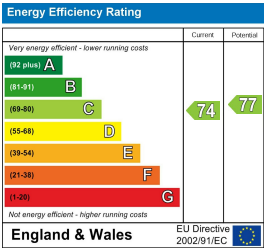
Offers in the region of £160,000

Flat 213 The Cedars, Abbey Foregate, Shrewsbury, SY2 6BY

**Property to sell?** We would be delighted to provide you with a free no obligation market assessment of your existing property. Please contact your local Halls office to make an appointment. **Mortgage/financial advice.** We are able to recommend a completely independent financial advisor,

who is authorised and regulated by the FCA. Details can be provided upon request. **Do you require a surveyor?** We are able to recommend a completely independent chartered surveyor. Details can be provided upon request.

Energy Performance Rating



A highly desirable and generously proportioned retirement apartment, with balcony and a lovely outlook in this sought after development.



01743 236444


**Shrewsbury Sales**  
2 Barker Street, Shrewsbury, Shropshire, SY1 1QJ  
E: shrewsbury@hallsgb.com





IMPORTANT NOTICE. Halls Holdings Ltd and any joint agents for themselves, and for the Vendor of the property whose Agents they are, give notice that: (i) These particulars are produced in good faith, are set out as a general guide only and do not constitute any part of a contract (ii) No person in the employment of or any agent of or consultant to Halls Holdings has any authority to make or give any representation or warranty whatsoever in relation to this property (iii) Measurements, areas and distances are approximate, Floor plans and photographs are for guidance purposes only (photographs are taken with a wide angled / zoom lenses) and dimensions shapes and precise locations may differ (iv) It must not be assumed that the property has all the required planning or building regulation consents. Halls Holdings, Bowmen Way, Shrewsbury, Shropshire SY4 3DR. Registered in England 06597073.



Close to town amenities.

  
1 Reception  
Room/s

  
2 Bedroom/s

  
1 Bath/Shower  
Room/s



- Popular and convenient location
- Sought after development
- Well proportioned accommodation
- Balcony with lovely outlook
- Communal parking and gardens
- NO ONWARD CHAIN

DIRECTIONS

From Shrewsbury Town Centre, proceed down Wyle Cop and over the English Bridge staying in the left hand lane. Continue onto Abbey Foregate moving into the right hand lane at the next set of traffic lights. Proceed straight ahead and after a short distance take the right turn into The Cedars.

SITUATION

The apartment is well situated and conveniently placed with a number of local amenities available including shops. The town centre is within walking distance and offers an excellent range of amenities including shops, restaurants and further social facilities. The town centre also offers a rail service.

DESCRIPTION

This spacious and thoughtfully designed retirement apartment offers comfortable living in a peaceful setting. The generous lounge/diner provides ample space for relaxing or entertaining, with doors opening onto a small balcony seating area that enjoys a lovely outlook towards a natural woodland space.

The well-fitted kitchen is both practical and stylish and contains a number of units, while the principal bedroom is particularly spacious. A good-sized second bedroom adds versatility, ideal for guests, hobbies, or a study. The property is served by a well proportioned and convenient shower room. Outside there are some communal gardens and a residents car park with spaces, which are on a first come first served basis.

GENERAL REMARKS

ANTI-MONEY LAUNDERING (AML) CHECKS

We are legally obligated to undertake anti-money laundering checks on all property purchasers. Whilst we are responsible for ensuring that these checks, and any ongoing monitoring, are conducted properly; the initial checks will be handled on our behalf by a specialist company, Movebutler, who will reach out to you once your offer has been accepted. The charge for these checks is £30 (including VAT) per purchaser, which covers the necessary data collection and any manual checks or monitoring that may be required. This cost must be paid in advance, directly to Movebutler, before a memorandum of sale can be issued, and is non-refundable. We thank you for your cooperation.

FIXTURES AND FITTINGS

Only those items described in these particulars are included in the sale.

TERMS OF LEASE

Leasehold with Vacant Possession upon Completion. 113 years remaining on lease. Service Charge - £281.66 pcm - £3200 pa (approx) Minimum age permitted is 55 years. Further details of the lease can be confirmed by the Vendor's solicitor.

SERVICES

Mains water, electricity and drainage are understood to be connected. None of these services have been tested.

COUNCIL TAX

The property is in Council Tax band 'C' on the Shropshire Council Register.

VIEWINGS

By appointment through Halls, 2 Barker Street, Shrewsbury, SY1 1QJ.