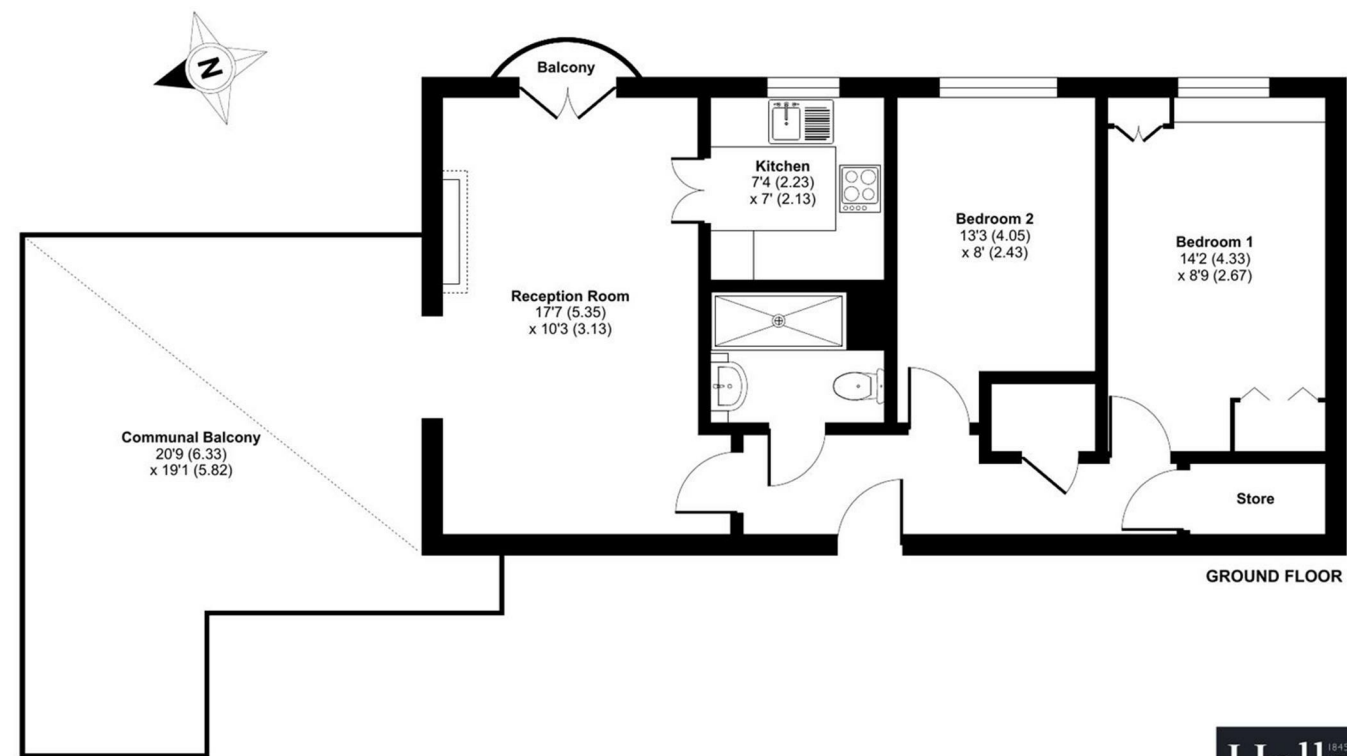


FOR SALE

11 Pengwern Court, Longden Road, Shrewsbury, SY3 7JE



Approximate Area = 622 sq ft / 57.7 sq m
For identification only - Not to scale



Floor plan produced in accordance with RICS Property Measurement 2nd Edition, Incorporating International Property Measurement Standards (IPMS2 Residential). © nñchecom 2025. Produced for Halls. REF: 1270385



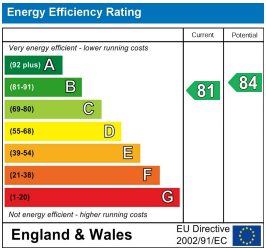
FOR SALE

Offers in the region of £185,000

11 Pengwern Court, Longden Road, Shrewsbury, SY3 7JE

Property to sell? We would be delighted to provide you with a free no obligation market assessment of your existing property. Please contact your local Halls office to make an appointment. **Mortgage/financial advice.** We are able to recommend a completely independent financial advisor, who is authorised and regulated by the FCA. Details can be provided upon request. **Do you require a surveyor?** We are able to recommend a completely independent chartered surveyor. Details can be provided upon request.

Energy Performance Rating



A well-presented and recently updated 2-bedroom upper ground floor retirement apartment, which is well positioned in this select development for the over 60's with wonderful town views.




01743 236 444

Shrewsbury Sales
2 Barker Street, Shrewsbury, Shropshire, SY1 1QJ
E: shrewsbury@hallsgb.com




IMPORTANT NOTICE. Halls Holdings Ltd and any joint agents for themselves, and for the Vendor of the property whose Agents they are, give notice that: (i) These particulars are produced in good faith, are set out as a general guide only and do not constitute any part of a contract (ii) No person in the employment of or any agent of or consultant to Halls Holdings has any authority to make or give any representation or warranty whatsoever in relation to this property (iii) Measurements, areas and distances are approximate, Floor plans and photographs are for guidance purposes only (photographs are taken with a wide angled / zoom lenses) and dimensions shapes and precise locations may differ (iv) It must not be assumed that the property has all the required planning or building regulation consents. Halls Holdings, Bowmen Way, Shrewsbury, Shropshire SY4 3DR. Registered in England 06597073.


Close to town amenities.



1 Reception Room/s



2 Bedroom/s



1 Bath/Shower Room/s



- Immaculate and well configured interior
- Good sized open plan living/dining room with dual aspect windows offering lovely views
- French doors leading to large balcony
- Great location
- Private parking and communal gardens
- NO ONWARD CHAIN

DIRECTIONS

From Shrewsbury town centre proceed out of town down Wyle Cop and over the English Bridge staying in the right-hand lane going around the gyratory system. Continue around to the right before heading left into Coleham Head. After a short distance take the first right turn into Coleham. Head straight past the shops and school and as you start to go up the bank, Pengwern Court will be found on the right-hand side.

SITUATION

Pengwen Court offers a super location and is within striking distance of an array of amenities, shops, tranquil riverside walks leading to the Quarry Park and the Shrewsbury town centre. Viewing is highly recommended.

DESCRIPTION

11 Pengwern Court is a bright and airy, spacious and well-proportioned two double bedroom, purpose built upper ground floor retirement apartment, located on this favoured development, set within beautifully kept communal grounds. The accommodation briefly comprises of the following: entrance hallway, open plan sitting/dining room, kitchen, two double bedrooms both with fitted wardrobes, shower room, communal lift, residence lounge and kitchen area, residence manager with 24hr emergency care line response system, additional guest suite accommodation for visitors (fee payable), attractive landscaped communal grounds, residence parking, electric heating.

ACCOMMODATION

ENTRANCE HALL

Slim line electric night storage heater, large walk-in storage cupboard with shelving, coat hooks and light, large built in airing cupboard, entry phone.

OPEN PLAN SITTING/DINING ROOM

A beautifully light and bright room, with double glazed french doors to the side opening to Juliet balcony, double glazed french doors to the rear lead on to attractive patio balcony area, enjoying views over landscaped gardens and across to towards the town, Adam style fireplace, slim line electric night storage heater, double glazed doors to:-

KITCHEN

Attractively fitted with a range of units, laminated work top, stainless steel sink unit, three tile surround to work areas, wall mounted electric fan heater. Integrated electric oven and four ring ceramic hob.

BEDROOM ONE

Electric night storage heater, double glazed window to the side, built in double wardrobe with mirrored folding doors, quality built in furniture includes double wardrobe with dressing table and drawers.

BEDROOM TWO

Wall mounted electric heater, double glazed window overlooking landscaped gardens to the side.

COMMUNAL HALLWAY

Door with spy hole leads to:-

SHOWER ROOM

Fully tiled walls, large shower cubicle with low profile tray and shower fitting, wash basin set to vanity surface with cupboard beneath, WC, extractor fan, wall mounted electric heater, wall mounted mirror with shaver socket and strip light.

OUTSIDE

There is a large balcony shared with the adjacent apartment with an area designated to approx. half to each apartment. (see plan). The property also benefits from the use of communal landscaped gardens with gazebo, Communal Residents' Parking, Residents' Lounge, Laundry etc.

GENERAL REMARKS

FIXTURES AND FITTINGS

Only those items described in these sale particulars are included in the sale.

TERMS OF LEASE

We are advised the Ground Rent is approx £360 per 6 months and the Service Charge is approx £3,028 for 6 months. 125 years from August 1998

SERVICES

Mains water, electricity and drainage are understood to be connected. Electric heating system. None of these services have been tested.

COUNCIL TAX

The property is in Council Tax band 'C' on the Shropshire Council Register.

VIEWINGS

By appointment through Halls, 2 Barker Street, Shrewsbury, SY1 1QJ.