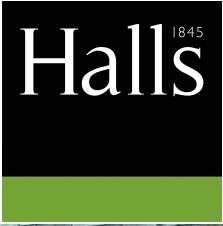
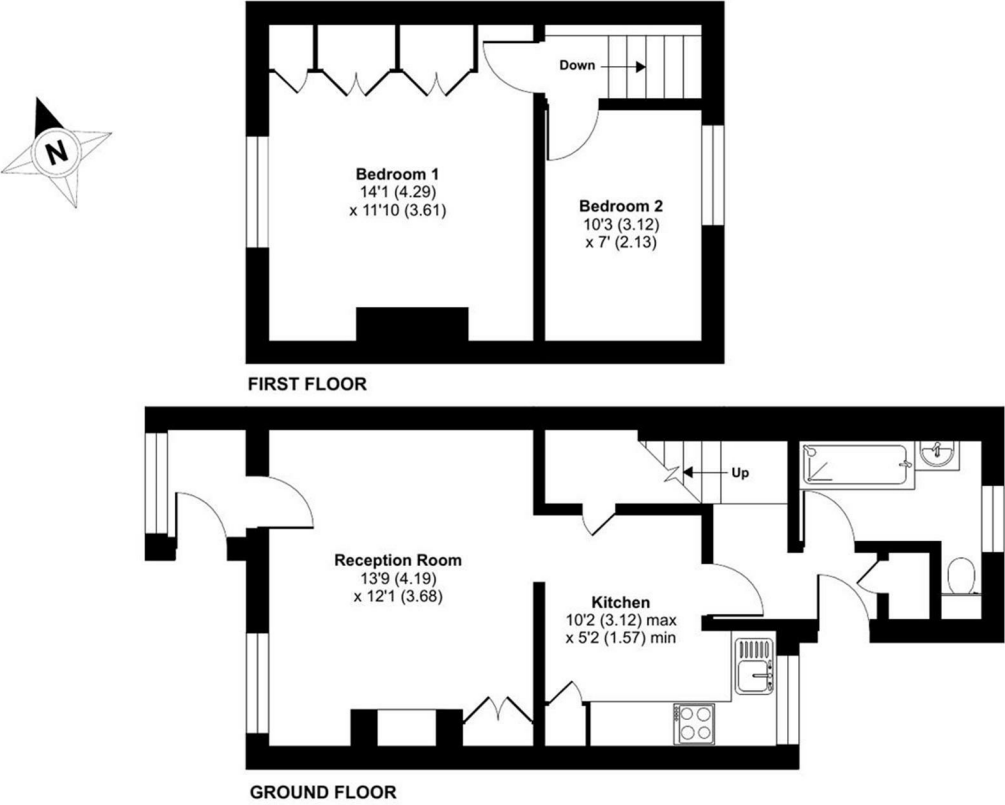


FOR SALE

3 Meadow Terrace, Old Woods, Bomere Heath, Shrewsbury, SY4 3AY



Approximate Area = 686 sq ft / 63.7 sq m
For identification only - Not to scale



Floor plan produced in accordance with RICS Property Measurement 2nd Edition, Incorporating International Property Measurement Standards (IPMS2 Residential). © nñchecom 2025. Produced for Halls. REF: 1257632



FOR SALE

Offers in the region of £210,000

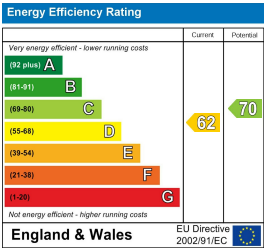
3 Meadow Terrace, Old Woods, Bomere Heath, Shrewsbury SY4 3AY

An attractive and characterful mature terrace cottage that has been updated and now offers well-presented, well laid out accommodation with south facing gardens

Property to sell? We would be delighted to provide you with a free no obligation market assessment of your existing property. Please contact your local Halls office to make an appointment. **Mortgage/financial advice.** We are able to recommend a completely independent financial advisor,

who is authorised and regulated by the FCA. Details can be provided upon request. **Do you require a surveyor?** We are able to recommend a completely independent chartered surveyor. Details can be provided upon request.

Energy Performance Rating



01743 236 444

Shrewsbury Sales
2 Barker Street, Shrewsbury, Shropshire, SY1 1QJ
E: shrewsbury@halls.gb.com



IMPORTANT NOTICE. Halls Holdings Ltd and any joint agents for themselves, and for the Vendor of the property whose Agents they are, give notice that: (i) These particulars are produced in good faith, are set out as a general guide only and do not constitute any part of a contract (ii) No person in the employment of or any agent of or consultant to Halls Holdings has any authority to make or give any representation or warranty whatsoever in relation to this property (iii) Measurements, areas and distances are approximate, Floor plans and photographs are for guidance purposes only (photographs are taken with a wide angled / zoom lenses) and dimensions shapes and precise locations may differ (iv) It must not be assumed that the property has all the required planning or building regulation consents. Halls Holdings, Bowmen Way, Shrewsbury, Shropshire SY4 3DR. Registered in England 06597073.

MILEAGES: Baschurch 2.2 miles, Shrewsbury 6.6 miles. All mileages are approximate.



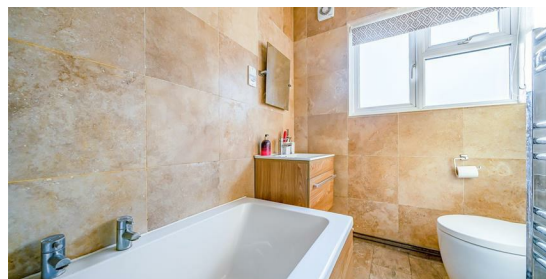
1 Reception Room/s



2 Bedroom/s



1 Bath/Shower Room/s



- Recently updated
- Lovely sitting room with log burning stove
- Charm and character
- 2 bedrooms
- Landscaped south facing gardens
- NO ONWARD CHAIN

DESCRIPTION

3 Meadow Terrace is has a great deal of charm and character throughout and the property has been sympathetically renovated and updated by the current owners. The ground floor offers an entrance porch which leads through to the spacious sitting room with brick fireplace with a log burning stove. Situated in the centre of the property is the recently fitted gloss kitchen that provides a generous amount of fitted units together with integrated appliances. Off the inner hallway, the bathroom offers a modern white suite with tiled walls. To the first floor there are two bedrooms, with the principal bedroom having built in wardrobes. Outside, to the front there is small garden enclosed by a part brick wall with wrought iron railings and pedestrian gate. There is on street parking to the front of the house. To the rear there are good size gardens that offer a lawned area, raised decked area and covered patio.

ACCOMMODATION

Panelled entrance door leads into entrance porch.

ENTRANCE PORCH

Shelving, coats hooks, glazed windows to the front and a glazed frosted entrance door leading through to:-

SITTING ROOM

With beamed ceiling, herringbone wood effect floor, attractive brick fireplace housing a log burning stove.

KITCHEN

With herringbone wood effect floor and a generous range of eye and floor level units, comprising cupboards and drawers with work surface area over and incorporating sink unit and drainer with mixer tap over. There is an integrated electric oven and grill with induction hob above. Integrated fridge freezer and part tiled walls. There also a useful breakfast area and an opening to the inner hall with bathroom and rear access beyond.

BATHROOM

Providing a white suite comprising low level WC, wash hand basin unit with storage below and panelled bath with shower over. Tiled walls - floor to ceiling and a wall mounted heated towel rail.

STAIRCASE

With wood panelling rising to the first floor landing

BEDROOM 1

with views over the front of the property, built in wardrobes and loft hatch.

BEDROOM 2

Overlooking the rear of the property.

GARDENS

Lovely enclosed rear gardens that are mostly laid to lawn with two al fresco entertaining areas in the form of a decked area and covered patio.

GENERAL REMARKS

FIXTURES AND FITTINGS

Only those items described in these particulars are included in the sale.

TENURE

Freehold. Purchasers must confirm via their solicitor.

SERVICES

Gas central heating. Mains water, electricity and drainage are understood to be connected. None of these services have been tested.

COUNCIL TAX

The property is currently showing as Council Tax Band B. Please confirm the council tax details via Shropshire Council on 0345 6789002 or visit www.gov.uk/council-tax-bands.

VIEWINGS

Halls, 2 Barker Street, Shrewsbury, Shropshire SY1 1QJ. Tel: 01743 236444. Email: shrewsbury@hallsgb.com