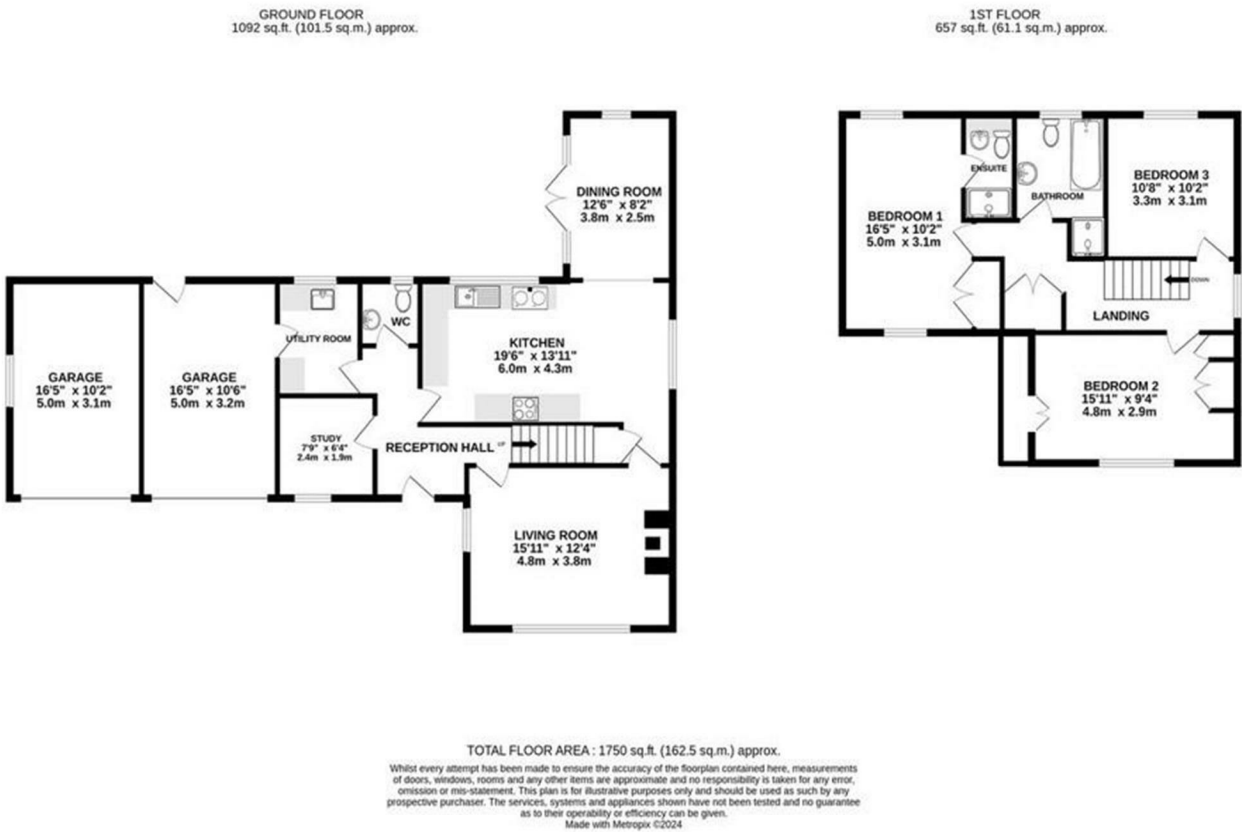


FOR SALE

Brompton House, Asterley, Near Minsterley, Shrewsbury, SY5 0AW



FOR SALE

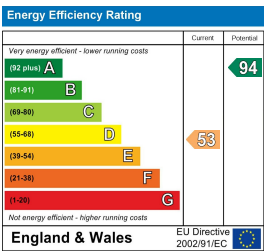
Offers in the region of £449,500

Brompton House, Asterley, Near Minsterley, Shrewsbury, SY5 0AW

**Property to sell?** We would be delighted to provide you with a free no obligation market assessment of your existing property. Please contact your local Halls office to make an appointment. **Mortgage/financial advice.** We are able to recommend a completely independent financial advisor,

who is authorised and regulated by the FCA. Details can be provided upon request. **Do you require a surveyor?** We are able to recommend a completely independent chartered surveyor. Details can be provided upon request.

Energy Performance Rating



A much improved and attractively presented detached house, offering deceptively spacious accommodation, set with double garage and wraparound lawned gardens, in this most popular rural locality.



01743 236 444


**Shrewsbury Sales**  
2 Barker Street, Shrewsbury, Shropshire, SY1 1QJ  
E: shrewsbury@hallsgb.com




IMPORTANT NOTICE. Halls Holdings Ltd and any joint agents for themselves, and for the Vendor of the property whose Agents they are, give notice that: (i) These particulars are produced in good faith, are set out as a general guide only and do not constitute any part of a contract (ii) No person in the employment of or any agent of or consultant to Halls Holdings has any authority to make or give any representation or warranty whatsoever in relation to this property (iii) Measurements, areas and distances are approximate, Floor plans and photographs are for guidance purposes only (photographs are taken with a wide angled / zoom lenses) and dimensions shapes and precise locations may differ (iv) It must not be assumed that the property has all the required planning or building regulation consents. Halls Holdings, Bowmen Way, Shrewsbury, Shropshire SY4 3DR. Registered in England 06597073.




MILEAGES: Pontesbury 2.4 miles, Shrewsbury 12.5 miles and Telford 23.4 miles. All distances are approximate.



3 Reception Room/s



3 Bedroom/s



2 Bath/Shower Room/s



- A popular rural locality
- Attractively presented accommodation
- Well proportioned rooms
- Flexible living environment
- Easily maintained gardens
- Generous driveway and double garage

**DIRECTIONS**  
From Shrewsbury take the A488 road to Bishops Castle passing through the villages of Hanwood and Pontesbury. On leaving Pontesbury, travel onto the next village of Minsterley, taking the second exit at the mini roundabout. At the next roundabout turn right onto Horsebridge Road (B4387) and then continue taking the right turn signposted Asterley. Proceed into the village and Brompton House will be found on the left hand side.

**SITUATION**  
The property is pleasantly situated and enjoys a convenient yet quiet position in this popular hamlet, approximately 2 miles from Pontesbury. Pontesbury offers an extensive range of amenities including a church, butchers/bakers, doctors surgery, shops, public houses, restaurants and primary and secondary schools. The county town of Shrewsbury has a comprehensive range of leisure, social and shopping facilities and the A5 link road provides excellent access to the M54 motorway and on towards the national motorway network. A rail service is available in the town centre.

**DESCRIPTION**  
Brompton House is a most desirable and much improved modern detached house which will no doubt provide wide market appeal. The current owners have made numerous improvements including new double glazed windows throughout, installation of a new kitchen and reconfiguration of the first floor accommodation to incorporate an en-suite shower room. The ground floor accommodation currently comprises a spacious living room with Clearview stove, useful study, feature open plan kitchen diner, separate utility room and guest WC. To the first floor, there are three spacious double bedrooms - the principal of which has an en-suite shower room - whilst the remaining two are served by the family bathroom. Outside, there is a generous driveway parking area which also gives access to the double garage. The gardens to the front are mostly laid to lawn, flanked by established and well stocked herbaceous borders containing a variety of different plants, specimen trees together with established hedgerows. In addition there is a block paved seating area. The lawns then extend to the side and rear leading to a generous flagged entertaining area.

**ACCOMMODATION**  
**COVERED ENTRANCE**  
With brick pavioured floor and panelled part glazed entrance door into:  
**ENTRANCE HALL**  
With staircase to first floor.  
**GUEST WC**  
Providing a suite comprising low level WC and pedestal wash hand basin. Fully tiled walls.  
**LIVING ROOM**  
With exposed beams to ceiling, fireplace with granite hearth housing a CLEARVIEW log burning stove. Dual aspect windows.  
**STUDY**  
Providing a fitted desk unit with storage cupboards under. Additional fitted shelving.

**BREAKFAST KITCHEN**  
Providing a modern range of eye and base level soft close units comprising cupboards and drawers with extensive work surface area over and incorporating a VILLEROY & BOCH ceramic sink unit with inset drainer and mixer tap over. AEG integrated electric oven and grill with 4 ring AEG induction hob unit and extractor hood over. Integral AEG dishwasher. Oil fired RAYBURN with twin oven and twin hot plates. Built in pull out pantry drawer. Space for fridge freezer. Ceiling downlighters. Built in understair storage cupboard. Arch through to:

**DINING ROOM**  
With vaulted ceiling. Attractive exposed brickwork. Contemporary wall mounted radiator. Twin glazed French doors with side panels leading out onto the flagged patio entertaining area with lawns beyond.

**UTILITY ROOM**  
With tiled floor and providing a range of base level cupboards and drawers with work surface area over. Belfast sink unit with tiled splash. Space and plumbing for washing machine. Door to Garage.

**FIRST FLOOR LANDING**  
With access to loft space. Built in airing cupboard housing the insulated hot water cylinder.

**BEDROOM 1**  
With dual aspect windows. One with lovely view towards the Stiperstone Hills and Devils Chair. One with far reaching views over fields towards the Windmill. Built in wardrobe. Door to:

**EN-SUITE SHOWER ROOM**  
Providing a modern white suite comprising low level WC with hidden cistern, wash hand basin set in vanity unit with storage cupboards under. Tiled splash. Shaving light and charging point. Shower cubicle with inset aqua boarding and mains fed shower with drench head and additional feeder shower attachment. Sliding splash screen. Wall mounted heated towel rail.

**BEDROOM 2**  
With built in double wardrobes and storage cupboards. Walk-in wardrobe. Views over roof tops towards Stiperstones hills.

**BEDROOM 3**  
With pleasant views towards Windmill.

**BATHROOM**  
With tiled floor and a suite comprising low level WC, pedestal wash hand basin and panelled bath. Fully tiled walls. Shower cubicle with wall mounted electric shower, inset tiling and splash screen. Heated towel rail.

**OUTSIDE**  
The property is approached through a timber gated entrance leading onto a generous tarmacadam driveway with space for numerous vehicles, whilst also giving access to the double garage and pedestrian access to the front and side of the property.

**GARAGE 1**  
With up and over entrance door. Power and light points. Oil fired central heating boiler. Pedestrian access door to the garden. Access door to Utility.

**GARAGE 2**  
With up and over entrance door. Power and light points.

**THE GARDENS**  
These are attractively designed offering established front gardens which comprise neatly manicured lawns surrounded by deeply stocked shrubbery beds and borders, together with a number of specimen trees. There is also a brick pavioured patio seating area. Gated access is available down either side leading to the rear. To one side there are well maintained lawns which wraparound to the rear flanked by raised shrubbery borders containing a number of different specimen plants and shrubs. Adjacent to the Dining Room is a flagged patio entertaining area ideal for Al Fresco Dining. External cold water tap. An Indian sandstone pathways then extends to the other side where a useful store area and log store can be found.

**GENERAL REMARKS**

**FIXTURES AND FITTINGS**  
Only those items described in these particulars are included in the sale.  
**TENURE**  
Freehold. Purchasers must confirm via their solicitor.  
**SERVICES**  
Mains water, electricity and drainage are understood to be connected. Oil fired central heating. None of these services have been tested.  
**COUNCIL TAX**  
The property is currently showing as Council Tax Band E. Please confirm the council tax details via Shropshire Council on 0345 6789002 or visit [www.gov.uk/council-tax-bands](http://www.gov.uk/council-tax-bands).  
**VIEWINGS**  
Halls, 2 Barker Street, Shrewsbury, Shropshire SY1 1QJ. Tel: 01743 236444. Email: [shrewsbury@halls.gb.com](mailto:shrewsbury@halls.gb.com)