



FOR SALE

Offers In The Region Of £825,000

Green Dragon Cottage Alberbury, Shrewsbury, SY5 9AH

A delightful detached country cottage, offering spacious immaculately presented and beautifully appointed accommodation, set with stunning gardens in a most idyllic rural locality.



MILEAGES, Shrewsbury 8.8 Miles, Welshpool 11.9 Miles, Telford 25 Miles. All mileages are approximate.



- Delightful cottage
- Immaculately presented
- Spacious rooms
- Driveway and garage
- Beautiful gardens
- Attractive outlook

DIRECTIONS

From Shrewsbury proceed west along the A458 Welshpool road and after about 2 miles, take the right turning signposted Lake Vyrnwy (B4393 road). Continue along this road to the village of Alberbury, and on reaching the war memorial turn right down a lane towards the church, passing the church entrance on the left. Proceed a short distance and the entrance to the driveway will be seen on the right hand side, where the house is set well back.

SITUATION

The property is situated in an attractive position located in a conservation area within the charming village of Alberbury, popular for its interesting range of period properties, while being easily accessible to the county town of Shrewsbury, which provides an excellent shopping centre, hospital and general amenities, together with a rail service. In addition, on the west side of Shrewsbury is the main A5 commuter route, which links through to the M54 motorway and Telford or alternatively gives access north to Oswestry. There is a daily bus service. The surrounding countryside to the village offers unspoilt farmland, whilst a number of sporting facilities are available including golf clubs at nearby Llanymynech and Oswestry, together with fishing in the locality. The popular tourist areas of Welshpool, Mid Wales and its Coast are again readily accessible.

DESCRIPTION

Green Dragon Cottage is a beautifully presented and deceptively spacious Cardeston Stone country cottage which offers wonderfully appointed and versatile accommodation. The ground floor boasts a stunning entrance hall, 3 traditional reception rooms and a bespoke KENTON JONES fitted kitchen with a range of integrated appliances and granite worktops. Positioned adjacent to the breakfast/kitchen room is an oak framed garden room which allows full appreciation of the wrap around gardens and views over farmland beyond. Also, to the ground floor is a useful utility room and guest WC. To the first floor there are four bedrooms, the principal of which also provides a dressing area and en-suite bathroom with separate shower cubicle. The remaining three bedrooms are then served by the family bathroom which also contains a separate shower. Outside, there is a generous gravelled driveway which provides parking for numerous vehicles and also gives access to the large garage, which has a remote controlled electric door. The gardens are particularly well established and offer beautifully manicured lawns which extend around the side and rear, incorporating a number of abundantly stocked floral shrubbery beds and borders, containing a variety of specimen plants and shrubs. Adjacent to the rear of the property is an extensive flagged sun terrace which offers a beautiful entertaining area with far reaching views towards Nesscliffe Hill.

ACCOMMODATION

With oak pillared porch. Original panelled entrance door leading into:

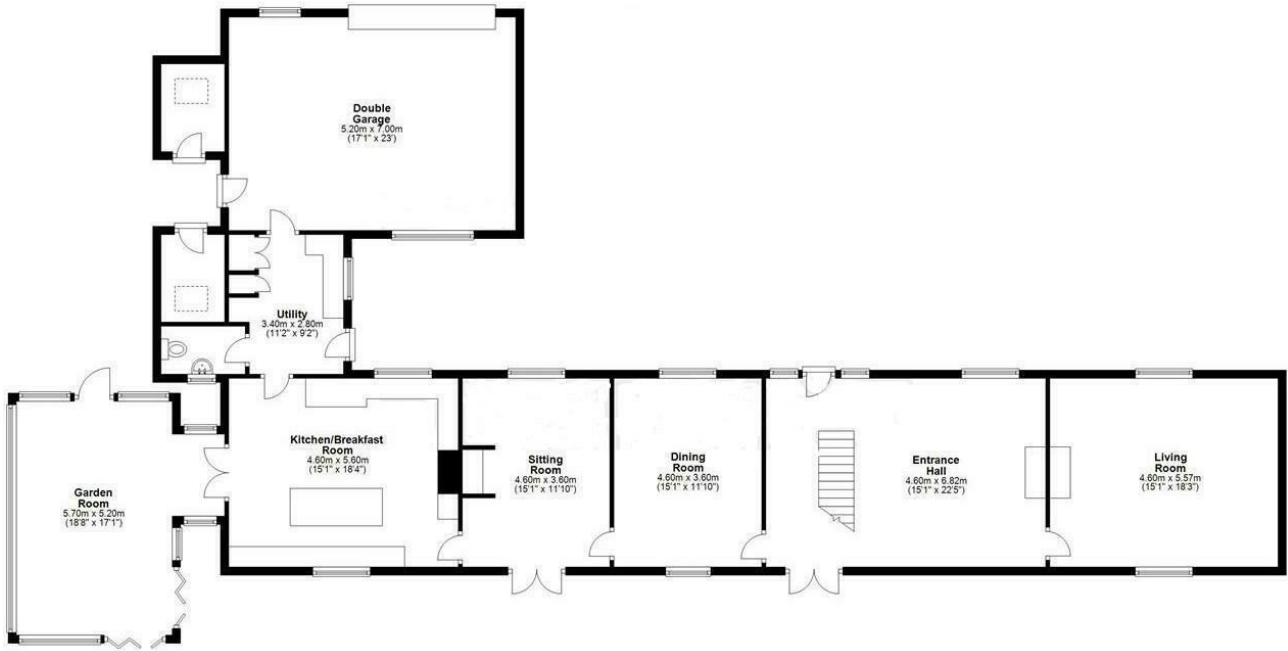
RECEPTION/DINING HALL

With beamed ceiling, oak flooring, fireplace with limestone hearth housing Clearview log burning stove. Staircase rising to first floor: Twin glazed french doors leading out onto the rear terrace and gardens offering a lovely outlook over fields and towards Nesscliffe Hill.



Ground Floor

Approx. 197.1 sq. metres (2121.4 sq. feet)



First Floor

Approx. 121.8 sq. metres (1311.5 sq. feet)



Total area: approx. 318.9 sq. metres (3432.9 sq. feet)

We accept no responsibility for any mistake or inaccuracy contained within the floorplan. The floorplan is provided as a guide only and should be taken as an illustration only. The measurements, contents and positioning are approximations only and provided as a guidance tool and not an exact replication of the property. Plans produced using PlanIt.

Indicative floor plans only - NOT TO SCALE - All floor plans are included only as a guide and should not be relied upon as a source of information for area, measurement or detail.



4 Reception
Room/s



4 Bedroom/s



2 Bath/Shower
Room/s



LIVING ROOM

With oak boarded flooring. Ornamental fireplace, beamed ceiling, dual aspect windows. Bespoke fitted recessed shelving and storage cupboards.

FORMAL DINING ROOM

With beamed ceiling, oak boarded flooring, lovely aspect.

SNUG/FAMILY ROOM

Beamed ceiling, oak boarded flooring, chimney breast with exposed brickwork and tiled hearth with beam over. Fitted recessed shelving, dual aspect windows with twin glazed oak framed French doors leading out to the rear gardens.

BREAKFAST/KITCHEN

A KENTON JONES kitchen providing a bespoke range of oak eye and base level units, comprising soft close cupboards and drawers with generous granite work surface area over incorporating a one and a half bowl sink unit with inset granite drainer, mixer tap over, instant boiling water. Integral BOSCH combination electric oven/microwave and grill with four ring ceramic hob unit over. Granite upstands and part tiled walls. Triple oven electric AGA with twin hot plate. Fitted display cupboard with downlighters and drawers under. Feature central island with large granite top, base level cupboards and drawers and breakfast bar eating area. Limestone floor. Integrated fridge freezer. Pantry cupboard with pull out sections. Twin bi-folding glazed oak framed doors through to garden room. Panelled part glazed door through to:

UTILITY

With tiled floor. Eye and base level oak units, comprising cupboards and drawers with granite work surface area over and incorporating a circular ceramic wash hand basin with mixer tap over. Granite upstands and sill. Ceiling downlighters, integrated washing machine and recessed tumble dryer, part glazed panelled oak door to front of property. Integral wine fridge with wine rack and shelving over. Built in double cloaks cupboard with hanging rail. Additional tall built in storage cupboard. Access door to double garage.

GUEST WC

With tiled floor and providing a HERITAGE suite comprising low level WC and wall mounted wash hand basin.



GARDEN ROOM (OAK FRAMED)

With underfloor heating (wet system). Limestone floor. Providing a delightful wrap a round windows and bi-folding doors offering a splendid outlook over the beautifully maintained gardens with farmland beyond and Nesscliffe Hill in the distance.

FIRST FLOOR LANDING

With beamed ceiling. Fitted storage cupboards.

PRINCIPAL SUITE

DRESSING AREA

With twin double built in wardrobes with mirror fronted sliding doors.

BEDROOM

With beamed ceiling and dual aspect windows with particularly pleasant views to the rear.

ENSUITE BATHROOM

With marble floor and providing a suite comprising low level WC, 'his and hers' JACUZZI wash hand basins set in vanity unit with granite top and storage cupboards under. Granite splash and granite sill. Deep fill HERITAGE bath with granite surround. Wall mounted heated towel rail, ceiling downlighters, exposed wall and ceiling timbers. Large shower cubicle with mains fed shower, sliding splash screen and inset tiling.

BEDROOM THREE

With wall and ceiling timbers, lovely views

BEDROOM FOUR

With ceiling timbers, ceiling downlighters, access to loft space.

BEDROOM TWO

With wall and ceiling timbers, ceiling downlighters, built in wardrobe with hanging rail.

FAMILY BATHROOM

Marble floor and providing a suite comprising low level WC, HERITAGE wash hand basin set in vanity unit with storage cupboards under, corner panelled bath. Shower cubicle with mains fed shower, inset tiling and sliding splash screen, Wall mounted heated towel rail. Exposed beams, tiled walls. Access to loft space.



OUTSIDE

The property is approached through a gated entrance leading onto an extensive and generous gravelled driveway with parking space for numerous vehicles, whilst also have vehicular access to the large garage.

GARAGE

With remote controlled electric entrance door. Power and light points. Electrical car charging point. Eaves storage area. Glazed oak door to the rear garden.

THE GARDENS

The gardens are a delightful feature to the property and seen to the front are immaculately manicured lawns with well stocked shrubbery beds and borders containing a variety of plants. A brick paved pathway leads to the front entrance door, extends to a small private patio area with external cold water tap.

Lawns then flow and extend around the side of the property with a further range of abundantly stocked shrubbery beds and borders. To one corner are a number of vegetable beds. Raised terraced seating area. Sitting adjacent to the rear of the property is an extensive gravelled and part flagged terrace, allowing for a delightful entertaining area with superb views over adjoining farmland and fields with Nesscliffe Hill in the distance. Below the terrace are immaculately kept lawns together with floral borders.

GENERAL REMARKS

FIXTURES AND FITTINGS

Only those items described in these particulars are included in the sale.

SERVICES

Mains water, electricity and drainage are understood to be connected. Oil fired central heating. None of these services have been tested.

TENURE

Freehold. Purchasers must confirm via their solicitor.

COUNCIL TAX

The property is currently showing as Council Tax Band G. Please confirm the council tax details via Shropshire Council on 0345 6789002 or visit www.gov.uk/council-tax-bands.

VIEWINGS

Halls, 2 Barker Street, Shrewsbury, Shropshire SY1 1QJ. Tel: 01743 236444. Email: shrewsbury@hallsgb.com

FOR SALE

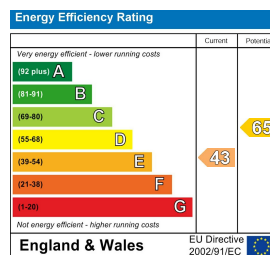
Green Dragon Cottage Alberbury, Shrewsbury, SY5 9AH



Property to sell? We would be delighted to provide you with a free no obligation market assessment of your existing property. Please contact your local Halls office to make an appointment. **Mortgage/financial advice.** We are able to recommend a completely independent financial advisor,

who is authorised and regulated by the FCA. Details can be provided upon request. **Do you require a surveyor?** We are able to recommend a completely independent chartered surveyor. Details can be provided upon request.

Energy Performance Rating



01743 236 444

Shrewsbury Sales

2 Barker Street, Shrewsbury, Shropshire, SY1 1QJ

E: shrewsbury@hallsgb.com



IMPORTANT NOTICE. Halls Holdings Ltd and any joint agents for themselves, and for the Vendor of the property whose Agents they are, give notice that: (i) These particulars are produced in good faith, are set out as a general guide only and do not constitute any part of a contract (ii) No person in the employment of or any agent of or consultant to Halls Holdings has any authority to make or give any representation or warranty whatsoever in relation to this property (iii) Measurements, areas and distances are approximate, Floor plans and photographs are for guidance purposes only (photographs are taken with a wide angled / zoom lenses) and dimensions shapes and precise locations may differ (iv) It must not be assumed that the property has all the required planning or building regulation consents. Halls Holdings, Bowmen Way, Shrewsbury, Shropshire SY4 3DR. Registered in England 06597073.