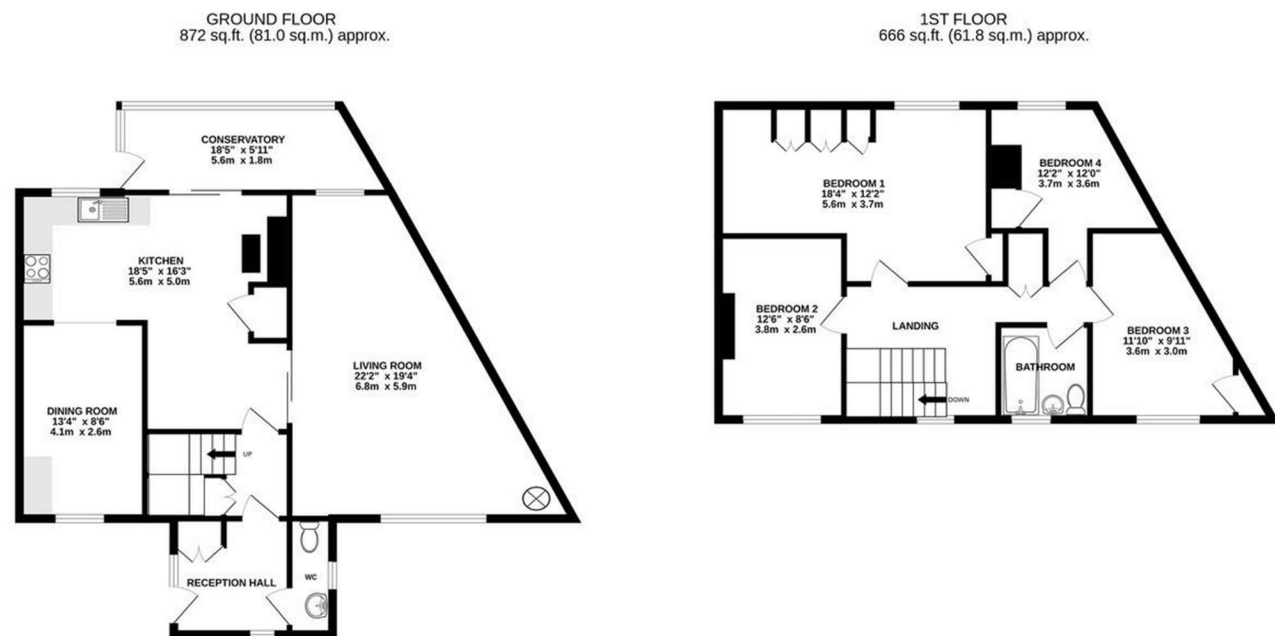


FOR SALE



10 Horsebridge, Minsterley, Shrewsbury, SY5 0AH



TOTAL FLOOR AREA: 1538 sq.ft. (142.9 sq.m.) approx.

Whilst every attempt has been made to ensure the accuracy of the floorplan contained here, measurements of doors, windows, rooms and any other items are approximate and no responsibility is taken for any error, omission or mis-statement. This plan is for illustrative purposes only and should be used as such by any prospective purchaser. The services, systems and appliances shown have not been tested and no guarantee as to their operability or efficiency can be given.
Made with Metropix ©2024



FOR SALE

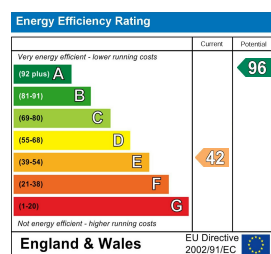
Offers In The Region Of £335,000

10 Horsebridge, Minsterley, Shrewsbury, SY5 0AH

Property to sell? We would be delighted to provide you with a free no obligation market assessment of your existing property. Please contact your local Halls office to make an appointment. **Mortgage/financial advice.** We are able to recommend a completely independent financial advisor,

who is authorised and regulated by the FCA. Details can be provided upon request. **Do you require a surveyor?** We are able to recommend a completely independent chartered surveyor. Details can be provided upon request.

Energy Performance Rating



A deceptively spacious detached house offering flexible accommodation and requiring modernisation, set with garage and delightful large gardens in this sought after rural location. IN ALL APPROX 0.32 ACRES.



01743 236 444

Shrewsbury Sales
 2 Barker Street, Shrewsbury, Shropshire, SY1 1QJ
 E: shrewsbury@hallsgb.com



IMPORTANT NOTICE. Halls Holdings Ltd and any joint agents for themselves, and for the Vendor of the property whose Agents they are, give notice that: (i) These particulars are produced in good faith, are set out as a general guide only and do not constitute any part of a contract (ii) No person in the employment of or any agent of or consultant to Halls Holdings has any authority to make or give any representation or warranty whatsoever in relation to this property (iii) Measurements, areas and distances are approximate, Floor plans and photographs are for guidance purposes only (photographs are taken with a wide angled / zoom lenses) and dimensions shapes and precise locations may differ (iv) It must not be assumed that the property has all the required planning or building regulation consents. Halls Holdings, Bowmen Way, Shrewsbury, Shropshire SY4 3DR. Registered in England 06597073.

MILEAGES: Shrewsbury 10.3 miles, Pontesbury 2.7 miles and Telford 24.3 miles. All mileages are approximate.



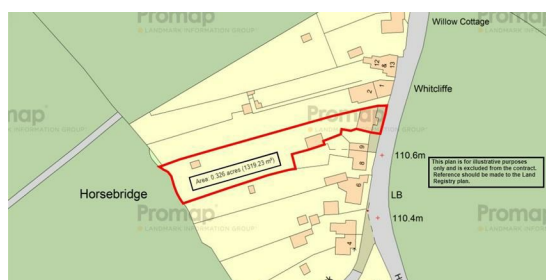
2 Reception Room/s



4 Bedroom/s



1 Bath/Shower Room/s



- Spacious mature detached house
- Versatile accommodation
- Requiring modernisation
- Lovely large gardens
- Driveway parking & Detached Garage
- NO ONWARD CHAIN

DESCRIPTION

10 Horsebridge is a particularly spacious, mature detached house offering versatile accommodation which requires a scheme of modernisation and improvement throughout. The ground floor offers a spacious living room, open plan living/dining/kitchen. Guest WC and useful rear porch. To the first floor there are four bedrooms and a bathroom. Outside there is parking to the front on a patterned concrete area. The property has the benefit of vehicular access over a neighbouring driveway, which in turn leads to a gated access to the rear of number 10 where a large detached garage can be found. The gardens are an especially delightful feature and large in size offering lovely flowing lawns, numerous well stocked shrubbery beds and borders together with pond, a mini orchard and vegetable beds. Set in all approx 0.32 acres.

ACCOMMODATION

Panelled part glazed entrance door leads into:

ENTRANCE HALL

With built in storage cupboard.

GUEST WC

With low level WC, pedestal wash hand basin with tiled splash.

INNER HALL

With staircase rising to first floor. Built in understairs storage cupboard.

OPEN PLAN KITCHEN/DINER

Providing eye and base level units, comprising cupboards and drawers with generous work surface area. One and half bowl stainless sink unit and drainer with mixer tap. Integral electric oven and grill with four ring electric hob. Tiled hearth housing multi fuel burning stove. Sliding patio door to conservatory. Built in storage cupboard with fitted shelving. Additional worktop with storage cupboards under. Fireplace housing oil fired central heating boiler.

LIVING ROOM

With brick fireplace, fitted book shelving, part panelling to ceiling and walls. Raised hearth housing log burning stove.

REAR PORCH

With UPVC double glazed windows, polycarbonate roof. Part glazed access door to rear garden.

FIRST FLOOR LANDING

Window with lovely views over fields to front and towards Pontesford Hill. Built in airing cupboard housing the insulated hot water cylinder with shelving over.

BEDROOM ONE

With range of built in wardrobes, built in storage cupboard. Attractive aspect over rear garden.

BEDROOM TWO

With attractive aspect over the fields to front with hills in the distance.

BEDROOM THREE

With built in storage cupboard, built in wardrobe and attractive aspect over garden.

BEDROOM FOUR

Built in wardrobe, attractive views to front.

BATHROOM

Providing a suite comprising, low level WC, pedestal wash hand basin and panelled bath with electric shower over. Part tiled walls and splash screen.

OUTSIDE

The property is approached over a patterned concrete area. The property also has the benefit of vehicular and pedestrian access over the adjoining gravelled driveway leading to a gated entrance leading onto a concrete driveway arriving at the detached garage/workshop.

GARAGE/WORKSHOP

With metal sliding entrance door. Power and light points. Inspection pit.

GARDENS

The gardens sit predominantly to the rear and offer a crazy paved patio seating area, together with large flowing lawns, flanked by established and attractively stocked shrubbery beds with borders. The gardens are of a particularly pleasing size and continue to offer further lawns, a nature pond with rockery bed. Numerous floral shrubbery beds and borders. Mini orchard, greenhouse, timber shed/store. It should be noted that the rear gardens have stunning views to the rear over farmland towards the Callow.

GENERAL REMARKS

FIXTURES AND FITTINGS

Only those items described in these particulars are included in the sale.

SERVICES

Mains water, electricity and drainage are understood to be connected. None of these services have been tested.

COUNCIL TAX

The property is currently showing as Council Tax Band E. Please confirm the council tax details via Shropshire Council on 0345 6789002 or visit www.gov.uk/council-tax-bands.

TENURE

Freehold. Purchasers must confirm via their solicitor.

VIEWINGS

Halls, 2 Barker Street, Shrewsbury, Shropshire SY1 1QJ. Tel: 01743 236444. Email: shrewsbury@halls.gb.com