

FOR SALE

1 Blackstone Barn Stourport Road, Bewdley, DY12 1PY



1 Blackstone Barns

Approximate Gross Internal Area = 128.7 sq m / 1385 sq ft



This plan is for guidance only and must not be relied upon as a statement of fact.



FOR SALE

Price £425,000

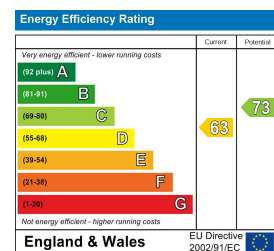
1 Blackstone Barn Stourport Road, Bewdley, DY12 1PY

An opportunity to purchase a generous 3/4 bedroom and 3 bathroom Grade II Listed barn conversion situated in a courtyard development in this popular and convenient semi-rural location. with off road parking and private gardens. Internal viewing recommended

Property to sell? We would be delighted to provide you with a free no obligation market assessment of your existing property. Please contact your local Halls office to make an appointment. **Mortgage/financial advice.** We are able to recommend a completely independent financial advisor,

who is authorised and regulated by the FCA. Details can be provided upon request. **Do you require a surveyor?** We are able to recommend a completely independent chartered surveyor. Details can be provided upon request.

Energy Performance Rating



01562 820 880

Kidderminster Sales

Gavel House, 137 Franche Road, Kidderminster, DY11 5AP
E: kidderminster@hallsgb.com



IMPORTANT NOTICE. Halls Holdings Ltd and any joint agents for themselves, and for the Vendor of the property whose Agents they are, give notice that: (i) These particulars are produced in good faith, are set out as a general guide only and do not constitute any part of a contract (ii) No person in the employment of or any agent of or consultant to Halls Holdings has any authority to make or give any representation or warranty whatsoever in relation to this property (iii) Measurements, areas and distances are approximate. Floor plans and photographs are for guidance purposes only (photographs are taken with a wide angled / zoom lenses) and dimensions shapes and precise locations may differ (iv) It must not be assumed that the property has all the required planning or building regulation consents. Halls Holdings, Bowmen Way, Shrewsbury, Shropshire SY4 3DR. Registered in England 06597073.

MILEAGE (all distances approximate)

Bewdley 1.5 miles Stourport on Severn 2 miles Worcester 14 miles Birmingham 24 miles M5 Junction 6 14 miles



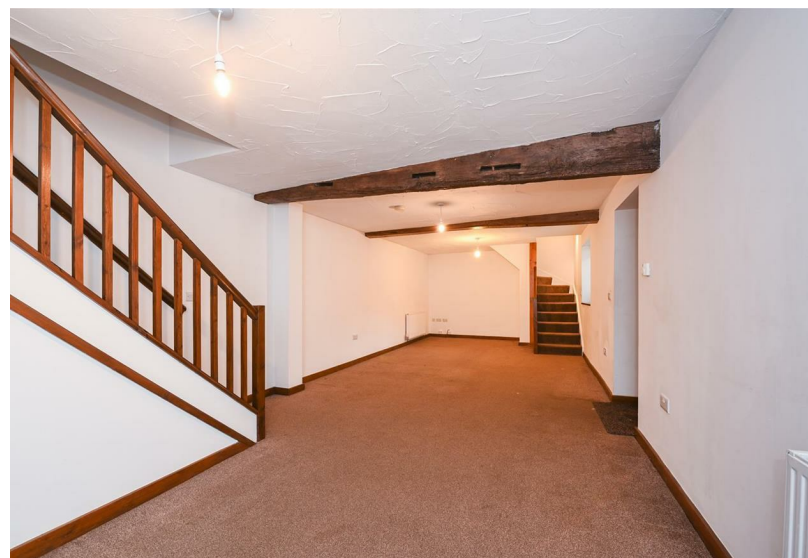
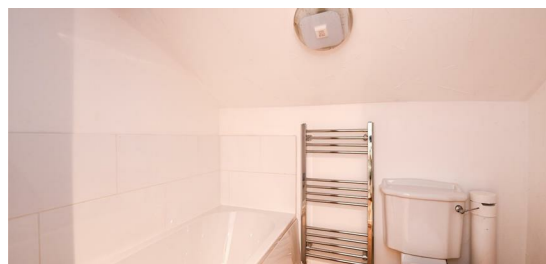
2 Reception Room/s



3 Bedroom/s



3 Bath/Shower Room/s



- A Well-Proportioned Barn Conversion
- 3/4 Bedrooms & 3 Bathrooms
- Generous Lounge Diner
- Fitted Kitchen Diner
- Snug or Office or Ground Floor Bedroom 4
- Private Gardens with Rural Views
- Convenient Semi-Rural Location
- No Onward Chain

DIRECTIONS

From Bewdley proceed out of town, over the river bridge and onto the B4195 Stourport Road. Continue to the traffic lights and turn right, remaining on the Stourport Road. Proceed over the ensuing round a bout and turn almost immediately right to Blackstone Barns.

LOCATION

Blackstone barns are well situated in this semi-rural location with good access to the local amenities of Bewdley and Stourport. Bewdley has been described as the most perfect small Georgian town in Worcestershire. With the beautiful river Severn running through and a comprehensive range of amenities both sporting and recreational with junior and senior schools, a variety of local shops, and a doctor's surgery, Bewdley has something for everyone. Birmingham is approximately 24 miles and the cathedral city of Worcester approximately 14 Miles distant which provides direct rail connections to London, Paddington and Birmingham. There is M5 motorway access via junction 5 at Wychbold and Junctions 6 & 7 to the north and south of Worcester.

Blackstone Barns occupies a favourable position between the River Severn and the main B4195 Bewdley to Stourport road. To the north the roundabout connects to the Bewdley by pass giving swift access to Kidderminster and Birmingham.

INTRODUCTION

An opportunity to purchase a generous barn conversion comprising 3-4 bedrooms and three bathrooms. There is a generous lounge diner, fitted kitchen with two separate staircases to the first-floor accommodation where there can be found 3 bedrooms and two bathrooms with a further occasional bedroom four/snug/office on the ground floor. The property has off road parking and private gardens situated in a courtyard development in this popular and convenient semi-rural location. An internal viewing recommended.

The property is approached via a solid wooden door into a generously proportioned:

LOUNGE DINER

With power points, TV aerial point, telephone point, two radiators, attractive exposed ceiling timbers, dual double-glazed window to the front aspect, three ceiling mounted light fittings and two separate staircases. One turning staircase leads to the master bedroom with an en-suite shower room. The second staircase leads to further two bedrooms and independent first floor bathroom. There is also a useful understairs storage cupboard and access to the fitted kitchen.

KITCHEN DINER

With tiled floor, range of wooden effect rolled top work surfaces with inset one and a half stainless steel sink with single drainer and mixer tap. Having an extensively tiled surround, matching base and eye level units with space and plumbing for automatic washing machine and tumble dryer. There is an integrated larder style fridge freezer, a double electric oven with five ring gas over and stainless-steel extractor hood. There are power points, radiator, wall mounted 'Worcester' boiler, dual ceiling mounted light fittings, double glazed window to the front aspect and solid wooden rear door and an inner hallway leading to a second ground floor reception room or occasional bedroom four.

SHOWER ROOM

With tiled floor, white suite of low level close coupled WC, pedestal wash hand basin, double shower cubicle being fully tiled with raised non slip tray, wall mounted shower, glazed sliding doors, wall mounted stainless steel electric heated towel rail, ceiling mounted light fitting and extractor fan.

SNUG/OFFICE or BEDROOM 4

This could be used as a snug, office or occasional BEDROOM FOUR with ceiling mounted light fitting, power points, radiator, telephone point and double-glazed window with an attractive rural outlook. A turning staircase leads to three first floor bedrooms to a landing with double glazed window, ceiling mounted light fitting, exposed ceiling timbers, radiator and double electric power point.

MASTER BEDROOM

With attractive exposed timbers, Velux style window, power points, telephone point, radiator, some fitted alcove shelving, ceiling mounted light fitting and inset spot light. There is access to the En-suite shower room.

EN-SUITE SHOWER ROOM

With a white suite of low level close coupled WC, pedestal wash hand basin, shower cubicle being fully tiled with nonslip tray, shower and glazed concertina inner shower door. There is a ceiling mounted light fitting and extractor fan.

SECOND STAIRCASE

Leading from the main lounge diner accesses two further first floor bedrooms and independent bathroom. The staircase leads to a landing with exposed wall and ceiling timbers, inset spot lights to ceiling, radiator, generous fitted cupboard and solid doors to two further bedrooms and a bathroom.

BEDROOMS TWO & THREE

With attractive exposed wall and ceiling timbers, power points, radiator, ceiling mounted light fitting, spot lights and Velux style windows to the front aspect.

BATHROOM

Situated off the first-floor landing has a white suite, comprising low level close coupled WC, pedestal wash hand basin with mixer tap, tiled splash back, panelled bath with mixer tap, wall mounted shower attachment, exposed wall and ceiling timbers, ceiling mounted light fitting and extractor fan.

OUTSIDE

The property is approached under a covered driveway leading to a generous gravelled courtyard area with a flagstone sloped path leading to the main entrance with external courtesy lighting. There is pedestrian gated side access to a further gravelled hardstanding area with external security lighting. There are steps leading down to a private lawned garden with two paved seating areas bordered via wooden panel fencing to all sides. The rear and side gardens are laid mainly to lawn.

This well-proportioned property is a well thought of and in a convenient semi-rural location. The property would benefit from some work and modernisation.

SERVICES

Mains water, electricity and oil-fired central heating are understood to be connected. Drainage by septic tank. None of these services have been tested.

FIXTURES & FITTINGS

Only those items described in these sale particulars are included in the sale.

TENURE

Freehold with Vacant Possession upon Completion.