



FOR SALE

Price Guide £669,995

Willow Barn, Station Road, Overton on Dee, Wrexham, LL13 0LJ

A characterful and generously proportioned detached four-bedroom barn conversion situated within land and attractive gardens which extend, in all, to over 3 acres, alongside a self-contained one-bedroom annexe and a number of useful outbuildings, pleasantly positioned in a semi-rural location on the edge of Overton-On-Dee.



Ellesmere (5 miles), Wrexham (7 miles), Oswestry (10 miles)

All distances approximate.



- **Substantial Barn Conversion**
- **Versatile Accommodation**
- **One Bedroom Annexe**
- **Useful Outbuildings**
- **Land and Gardens ext to approx 3.2 ac**
- **Rural Location close to Overton**

DESCRIPTION

Halls are delighted with instructions to offer Willow Barn in Overton on Dee for sale by Private Treaty.

Willow Barn is a substantial and well appointed detached four-Bedroom barn conversion which provides over 2,200 sq ft of characterful and astonishingly versatile living accommodation predominately situated over one floor, which presently comprises an Entrance Hall, Cloakroom, Dining Room, Family Room, Kitchen/Breakfast Room, Utility Room, family Bathroom, and four Bedrooms (the Master benefitting from an En-Suite), alongside a large first floor living Room.

Adjoining the property is a self-contained one-Bedroom annexe providing a further approx 825 sq ft of living space and offering excellent potential for a variety of onwards usages, be that as dependant living accommodation or for use as an air BnB.

The property is positioned within land and gardens which extend, in all, to around 3.2 acres or thereabouts, and which have been carefully maintained and improved by the current vendor to now offer a delightful complement to the property, with ample parking space to the front accompanied by, to the rear, lawned gardens which lead on to two permanent pasture paddocks.

The property is further complemented by two useful outbuildings, with one positioned on the north-western boundary of the property and another lying at the end of the gravelled driveway and adjoining the paddocks.

W3W

///blaze.colonies.sharpens

SITUATION

Willow Barn occupies an enviably semi-rural location on the edge of the popular, traditional village of Overton-On-Dee, which boasts a respectable range of amenities for its size, including School, Medical Centre, Café, Church, and Convenience Store, whilst also being well situated for access to the nearby lakeland town of Ellesmere, which provides a more comprehensive range of facilities. The county centre of Wrexham lies around 7 miles to the north and offers an exhaustive array of educational, leisure, and cultural attractions.

DIRECTIONS

Leave Ellesmere on Grange Road in the direction of Overton-On-Dee and, when reaching the T junction in the middle of the village, turn right in the direction of Whitchurch and continue for around 0.6 miles when the property will be situated on the right hand side, identified by a Halls "For Sale" board.

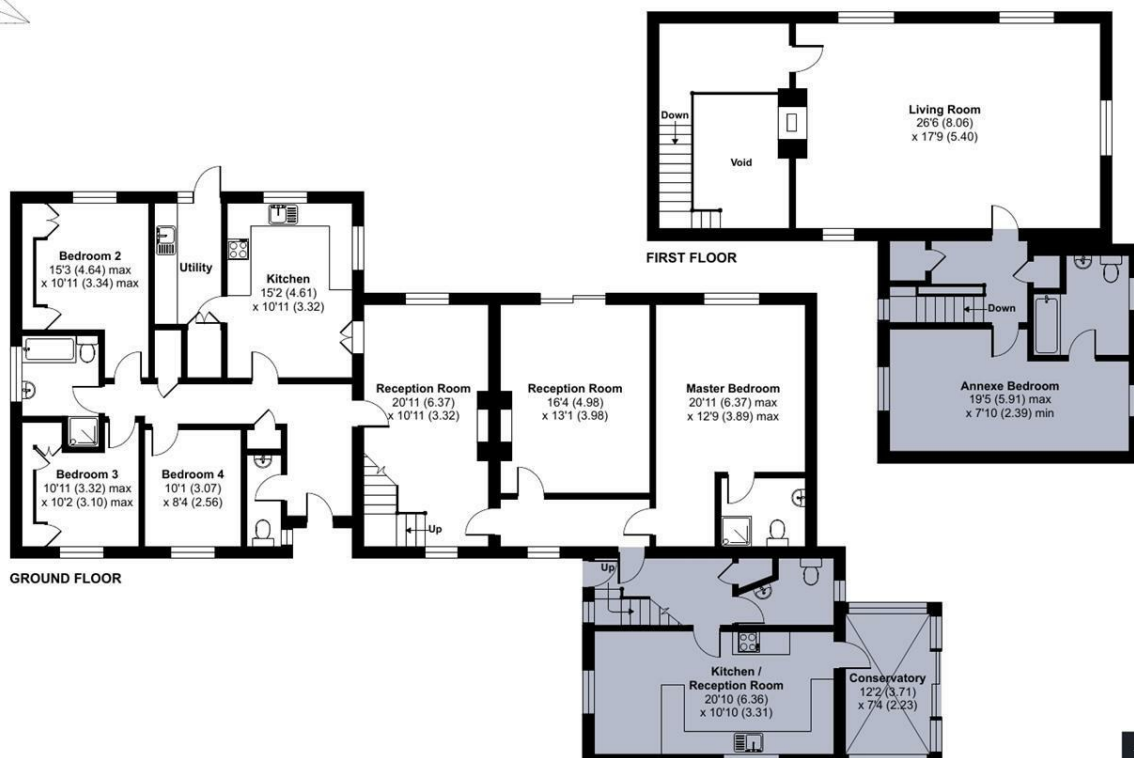
SCHOOLING

The property lies within a convenient distance of a number of well-regarded state and private schools, including St.Marys in Overton, The Madras Aided School, the Maelor School, Lakelands Academy, Ellesmere Primary School, Ellesmere College, Oswestry School, Moreton Hall, and Shrewsbury College.



Approximate Area = 2250 sq ft / 209 sq m
Annexe = 825 sq ft / 76.6 sq m
Total = 3075 sq ft / 285.6 sq m

For identification only - Not to scale



Floor plan produced in accordance with RICS Property Measurement 2nd Edition, Incorporating International Property Measurement Standards (IPMS2 Residential). © nrichcom 2025. Produced for Halls. REF: 1252916



Indicative floor plans only - NOT TO SCALE - All floor plans are included only as a guide and should not be relied upon as a source of information for area, measurement or detail.



3 Reception
Room/s



4 Bedroom/s



2 Bath/Shower
Room/s



THE PROPERTY

The property provides principal access via a covered Porch into an Entrance Hall where single-storey accommodation leads off to the left and comprises a Kitchen/Breakfast Room with a range of base and wall units and dual-aspect windows allowing views over the gardens to the south, this segueing into a Utility Room with space planned space for appliances and a rear access door directly on to the patio area, along with three Bedrooms, two of which feature built-in storage, and a family Bathroom containing a white suite.

Leading right from the Entrance Hall, a door provides access into an impressive Dining Room with full-height ceilings and offering dual-aspect windows to the front and rear, along with a wood-burner set into an exposed brick chimney breast which also opens into a cosy Family Room with patio doors out to the rear. Completing the ground floor accommodation is a generously proportioned Master Bedroom with a south-facing window and adjoining En-Suite Shower Room.

From the Dining Room, carpeted stairs rise to a charming galleried landing which provides possibilities for use a study space or reading nook, and from where a door leads into a substantial Living Room which extends to over 350 sq ft and features a range of traditional exposed ceiling timbers and trusses with windows onto three aspects, all of which look out over the unspoilt countryside beyond.

THE ANNEXE

Adjoining Willow Barn on its north-western boundary is a one-bedroom, two-storey self-contained annexe which offers excellent possibilities for a range of onward usages, be that for dependant or guest accommodation, holiday letting, or for inclusion within the body of the main home. The annexe is well presented throughout and presently comprises an open-plan Living/Dining/Kitchen Room, Entrance Hall, Cloakroom, Conservatory, and Bedroom with accompanying En-Suite Bathroom. The annexe enjoys a dedicated entrance door but also benefits from interconnecting internal doors, linking it to the main dwelling.



THE GARDENS

The property is accessed onto a substantial gravelled driveway which provides ample space for a number of vehicles and is flanked to one side by an area of lawn inset with an attractive pond shaded by a number of mature trees, with the gravelled area extending past the side of the property and culminating at a particularly useful outbuilding (Approx 9.3m x 6.1m) of predominately metal construction and offering space for the storing of vehicles/machinery.

Lying immediately beyond the rear of the property, and enjoying a desirable south-facing aspect, are attractive gardens which feature generous expanses of lawn interspersed with a number of mature trees and well-stocked floral beds, alongside an substantial paved patio area which runs along the length of the rear of the property and represents a wonderful space for sitting out and enjoying the unspoilt views to the rear.

Also situated within the rear gardens are a number of further outbuildings, namely a delightful timber Summerhouse which overlooks the gardens and the paddocks and represents a wonderful spot for sitting out, alongside a steel-framed, metal-clad outbuilding (approx 5.5m x 6m) providing excellent storage capabilities.

LAND

Willow Barn is enviably accompanied by number of permanent pasture paddocks, these situated immediately to the south of the garden and presently divided into two distinct enclosures which offer excellent opportunities for the grazing of horses, ponies, or a variety of livestock.

THE ACCOMMODATION COMPRISES:

- Ground Floor -
Entrance Hall:
Kitchen: 4.61m x 3.32m
Utility Room:
Dining Room: 6.37m x 3.32m
Family Room: 4.98m x 3.98m
Master Bedroom (incl En-Suite): 6.37m x 3.89m
Bedroom Two: 4.64m x 3.34m (max)
Bedroom Three: 3.32m x 3.10m (max)
Bedroom Four: 3.07m x 2.56m
Family Bathroom:



- First Floor -
Living Room: 8.06m x 5.40m

- The Annexe -
Entrance Hall:
Kitchen/Dining/Living Rm: 6.36m x 3.31m
Conservatory: 3.71m x 2.23m
Cloakroom:
Bedroom: 5.91m x 2.39m
En-Suite:

SERVICES

The property benefits from mains water, electricity, and gas. Heating in the main property is via a mains gas combi boiler with an oil-fired boiler providing heat to the annexe. Drainage is to a private system.

TENURE

The property is said to be of Freehold tenure and vacant possession will be granted upon completion.

LOCAL AUTHORITY & COUNCIL TAX

Wrexham Borough Council, The Guildhall, Wrexham LL11 1AY.

The property is shown as being within council tax band G on the local authority register.

ANTI-MONEY LAUNDERING (AML) CHECKS

We are legally obligated to undertake anti-money laundering checks on all property purchasers. Whilst we are responsible for ensuring that these checks, and any ongoing monitoring, are

conducted properly; the initial checks will be handled on our behalf by a specialist company, Movebutler, who will reach out to you once your offer has been accepted.

The charge for these checks is £30 (including VAT) per purchaser, which covers the necessary data collection and any manual checks or monitoring that may be required. This cost must be paid in advance, directly to Movebutler, before a memorandum of sale can be issued, and is non-refundable. We thank you for your cooperation.

FOR SALE

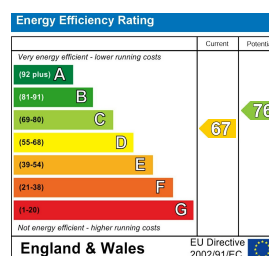
Willow Barn, Station Road, Overton on Dee, Wrexham, LL13 0LJ



Property to sell? We would be delighted to provide you with a free no obligation market assessment of your existing property. Please contact your local Halls office to make an appointment. **Mortgage/financial advice.** We are able to recommend a completely independent financial advisor,

who is authorised and regulated by the FCA. Details can be provided upon request. **Do you require a surveyor?** We are able to recommend a completely independent chartered surveyor. Details can be provided upon request.

Energy Performance Rating



Halls 1845

01691 622 602

Ellesmere Sales

The Square, Ellesmere, Shropshire, SY12 0AW

E: ellesmere@halls.gb.com



IMPORTANT NOTICE. Halls Holdings Ltd and any joint agents for themselves, and for the Vendor of the property whose Agents they are, give notice that: (i) These particulars are produced in good faith, are set out as a general guide only and do not constitute any part of a contract (ii) No person in the employment of or any agent of or consultant to Halls Holdings has any authority to make or give any representation or warranty whatsoever in relation to this property (iii) Measurements, areas and distances are approximate, Floor plans and photographs are for guidance purposes only (photographs are taken with a wide angled / zoom lenses) and dimensions shapes and precise locations may differ (iv) It must not be assumed that the property has all the required planning or building regulation consents. Halls Holdings, Bowmen Way, Shrewsbury, Shropshire SY4 3DR. Registered in England 06597073.

halls.gb.com

Residential / Fine Art / Rural Professional / Auctions / Commercial