

**FOR SALE**

Price Guide £650,000

## 4 Argoed Hall Froncysyllte, Llangollen, LL20 7RH

A substantial and much improved five-bedroom family home providing around 4,000 sq ft of stylishly presented living accommodation with ground floor office, elegantly positioned within a converted grade II listed manor house and set amongst approximately 2 acres of communal formal gardens with spectacular views over the River Dee and towards the Welsh hills.





Llangollen (4 miles), Wrexham (9 miles), Chester (22 miles), Shrewsbury (25 miles).

All mileages approximate.



- Stylishly Presented
- Approx. 4,000 sq ft
- Circa 2ac Gardens
- Much Improved
- Spectacular Views
- No Onward Chain

## DESCRIPTION

Halls are delighted with instructions to offer 4 Argoed Hall, Froncysyllte, for sale by private treaty.

Argoed Hall is an imposing Grade II listed Victorian manor house which has been converted to now provide a select development of just four substantial properties enjoying an elevated position with far reaching views over the River Dee and on to the Welsh Hills.

4 Argoed Hall is located within the northern aspect of the hall and provides around 4,000 sq ft of much improved and stylishly presented living accommodation, situated over three floors, with an open plan Kitchen/Dining Room complemented by an impressively proportioned Reception Room (formerly the Ballroom) with views over both the formal gardens and the rugged Welsh landscape, five Bedrooms (three of which boast En-Suites), a Family Bathroom, ground floor Office/Study, and galleried Landing.

The property benefits from gated access and nestles within approximately 2 acres of meticulously maintained gardens comprising lawns, well-stocked beds, and mature trees, with the surrounding established woodland providing a wealth of privacy. The hall perches above the meandering River Dee which flows to the east, with the panoramic Vale of Llangollen providing a scenic backdrop.

4 Argoed Hall enjoys two allocated parking spaces, along with a number of visitors spaces.

The sale of 4 Argoed Hall does, therefore, provide the rare opportunity for purchasers to acquire a substantial family home situated within an imposing Grade II listed manor house and accompanied by attractive gardens with far-reaching views, pleasingly situated within a convenient edge of village location

**W3W**

///braved.tradition.fancy



## SITUATION

Argoed Hall is situated on the edge of the village of Froncysyllte, most famous for its landmark aqueduct, and, whilst enjoying a private position behind a gated perimeter, retains a convenient proximity to traditional village life with its range of day-to-day amenities. The property is particularly well positioned for access to the picturesque market town of Llangollen, which lies around 4 miles to the west and provides a wider range of facilities, including Schools, Supermarkets, independent Boutiques, Medical Facilities, and scenic walks along with River Dee. A bus to Llangollen departs immediately beyond Argoed Hall's main access gate.

The county centres of Wrexham, Chester, and Shrewsbury all lie within reasonable commuting distance and provide a more comprehensive range of amenities of all kinds, with a range of artistic and cultural venues on offer.

## THE PROPERTY

4 Argoed Hall has recently been subject to a comprehensive scheme of decorative improvement works and now boasts around 4,000 sq ft of well-appointed and tastefully presented living accommodation.

The property is accessed directly into a welcoming Entrance Hall where carpeted stairs lead to the first floor and a further door leads into an open plan Kitchen/Dining Room, which features a fully fitted Kitchen and ample space for a substantial dining table, with a Utility/Boiler Room situated on the southern side. The ground floor accommodation also provides a Cloakroom and versatile Office/Snug, as well as well appointed Bedroom with complementary En-Suite, making it ideal for guests.

Carpeted Stairs rise to an equally well proportioned first floor where, most notably, can be found an impressive Reception Room (formerly the Ballroom) with an open-fire set within panelled walls, and multi-aspect windows offering views over the well-maintained gardens to the front and far-reaching views across the dramatic landscape beyond, these particularly evident from the pronounced reading nook situated on the northern aspect. The first floor offers a further Bedroom, again with an accompanying En-Suite, that capitalises further on views of the surrounding landscape.

Indicative floor plans only - NOT TO SCALE - All floor plans are included only as a guide and should not be relied upon as a source of information for area, measurement or detail.





1 Reception  
Room/s



5 Bedroom/s



4 Bath/Shower  
Room/s



The second floor begins at a galleried Landing, which provides access onto a dedicated balcony for number 4, currently utilised as library space but with scope for a variety of usages, from where doors allow access into three further Bedrooms (one boasting an En-Suite) and a family bathroom.

### OUTSIDE

Argoed Hall nestles within a protective boundary of established woodland, with electrically operated access gates leading onto around 2 acres of meticulously maintained communal gardens with comprise generous expanses of lawn, well-stocked floral beds, period features, and dedicated parking for the four homes.

The grounds perch above the River Dee, which meanders below and sits against a backdrop of the Welsh Hills, which rise through the Vale of Llangollen and culminate in the peaks of Snowdonia.

### THE ACCOMMODATION COMPRISES

#### GROUND FLOOR

Entrance Hall:

Kitchen/Dining Room: 9.24m x 7.44m (max)

Boiler/Utility Room: 3.34m x 2.30m

Snug/Office: 3.29m x 2.41m

Bedroom: 4.50m x 4.29m (max)

En-Suite:

Cloakroom:

#### FIRST FLOOR

Reception Room: 12.10m x 9.30m (max)

Bedroom: 6.62m x 5.15m

En-Suite:

#### SECOND FLOOR

Bedroom: 5.83m x 5.42m

En-Suite:

Bedroom: 6.82m x 5.06m (max)

Bedroom: 4.93m x 2.40m

Family Bathroom:

#### SERVICES

We understand that the property benefits from mains water, drainage, gas, and electrics.

#### TENURE & POSSESSION

The property is said to be of freehold tenure and vacant possession will be granted upon completion.

#### COUNCIL TAX

The property is shown as being within council tax band G on the local authority register.

#### LOCAL AUTHORITY

Wrexham County Borough Council, Guildhall, Wrexham LL11 1AY.

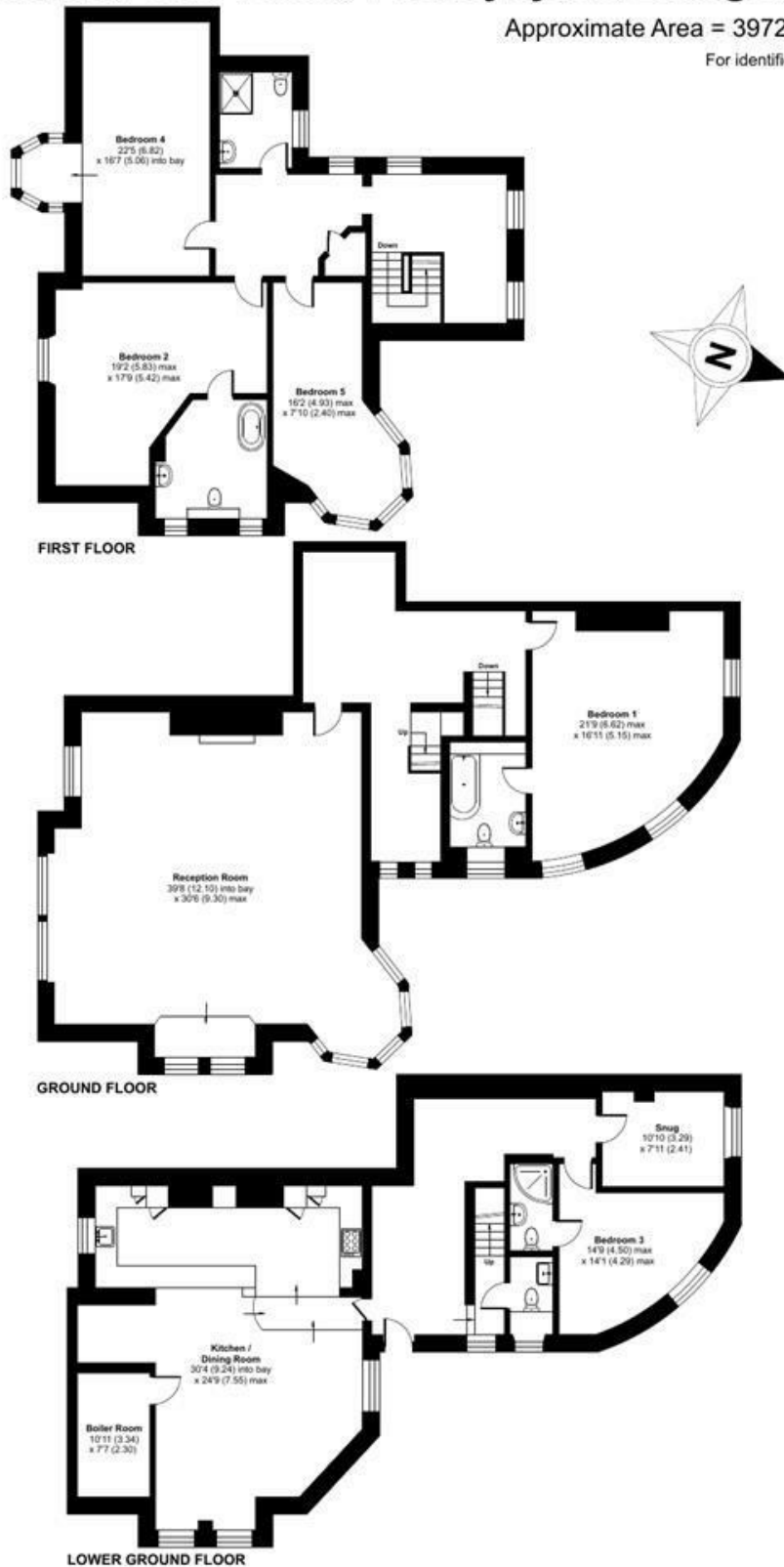
#### VIEWINGS

By appointment through Halls, The Square, Ellesmere, Shropshire, SY12 0AW.

# Argoed Hall, Gate Road, Froncysyllte, Llangollen, LL20

Approximate Area = 3972 sq ft / 369 sq m

For identification only - Not to scale



Floor plan produced in accordance with RICS Property Measurement 2nd Edition, Incorporating International Property Measurement Standards (IPMS2 Residential). © nichecom 2025. Produced for Halls GB. REF: 1235441.



FOR SALE

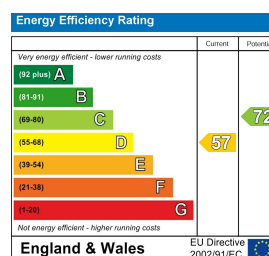
## 4 Argoed Hall Froncysyllte, Llangollen, LL20 7RH



**Property to sell?** We would be delighted to provide you with a free no obligation market assessment of your existing property. Please contact your local Halls office to make an appointment. **Mortgage/financial advice.** We are able to recommend a completely independent financial advisor,

who is authorised and regulated by the FCA. Details can be provided upon request. **Do you require a surveyor?** We are able to recommend a completely independent chartered surveyor. Details can be provided upon request.

### Energy Performance Rating



01691 622 602

**Ellesmere Sales**

The Square, Ellesmere, Shropshire, SY12 0AW

E: [ellesmere@halls.gb.com](mailto:ellesmere@halls.gb.com)



IMPORTANT NOTICE. Halls Holdings Ltd and any joint agents for themselves, and for the Vendor of the property whose Agents they are, give notice that: (i) These particulars are produced in good faith, are set out as a general guide only and do not constitute any part of a contract (ii) No person in the employment of or any agent of or consultant to Halls Holdings has any authority to make or give any representation or warranty whatsoever in relation to this property (iii) Measurements, areas and distances are approximate, Floor plans and photographs are for guidance purposes only (photographs are taken with a wide angled / zoom lenses) and dimensions shapes and precise locations may differ (iv) It must not be assumed that the property has all the required planning or building regulation consents. Halls Holdings, Bowmen Way, Shrewsbury, Shropshire SY4 3DR. Registered in England 06597073.