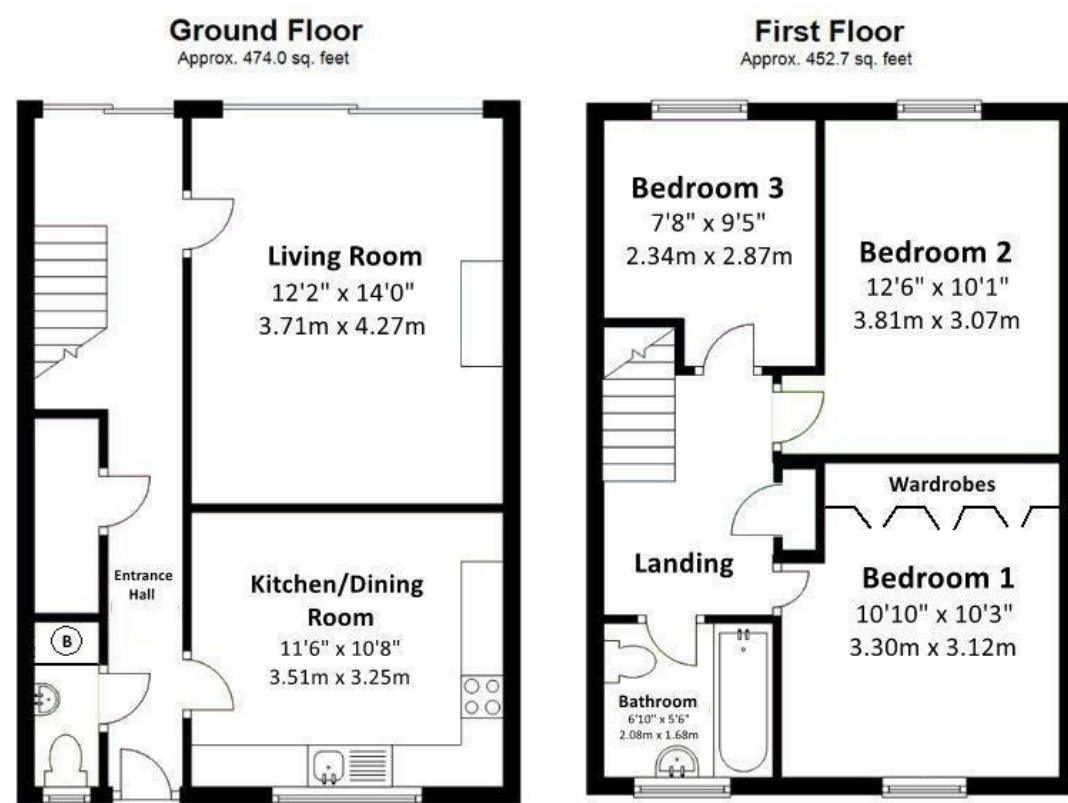


FOR SALE

21 Corick's Rise, Bishops Castle, SY9 5BB

Halls 1845



Total area: approx. 926.7 sq. feet

Illustration For Identification Purposes Only. Not To Scale.  
Plan produced using PlanUp.



FOR SALE

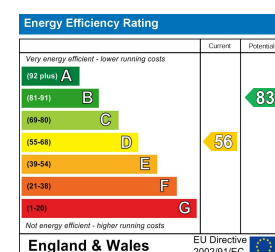
Offers in the region of £220,000

21 Corick's Rise, Bishops Castle, SY9 5BB

**Property to sell?** We would be delighted to provide you with a free no obligation market assessment of your existing property. Please contact your local Halls office to make an appointment. **Mortgage/financial advice.** We are able to recommend a completely independent financial advisor,

who is authorised and regulated by the FCA. Details can be provided upon request. **Do you require a surveyor?** We are able to recommend a completely independent chartered surveyor. Details can be provided upon request.

#### Energy Performance Rating



A spacious semi-detached property offering room for modernisation, comprising of 3 bedrooms, bathroom, living room, kitchen and cloaks/WC. Gardens to the front and rear are laid to lawn with views over the hills beyond. Peacefully located just a few minutes walk from the centre of this historic market town.



01588 638 755

**Bishops Castle Sales**

33b Church Street, Bishops Castle, Shropshire, SY9 5AD  
E: [bishopscastle@hallsgb.com](mailto:bishopscastle@hallsgb.com)



IMPORTANT NOTICE. Halls Holdings Ltd and any joint agents for themselves, and for the Vendor of the property whose Agents they are, give notice that: (i) These particulars are produced in good faith, are set out as a general guide only and do not constitute any part of a contract (ii) No person in the employment of or any agent of or consultant to Halls Holdings has any authority to make or give any representation or warranty whatsoever in relation to this property (iii) Measurements, areas and distances are approximate, Floor plans and photographs are for guidance purposes only (photographs are taken with a wide angled / zoom lenses) and dimensions shapes and precise locations may differ (iv) It must not be assumed that the property has all the required planning or building regulation consents. Halls Holdings, Bowmen Way, Shrewsbury, Shropshire SY4 3DR. Registered in England 06597073.

[hallsgb.com](http://hallsgb.com)

Residential / Fine Art / Rural Professional / Auctions / Commercial

[hallsgb.com](http://hallsgb.com)

01588 638 755





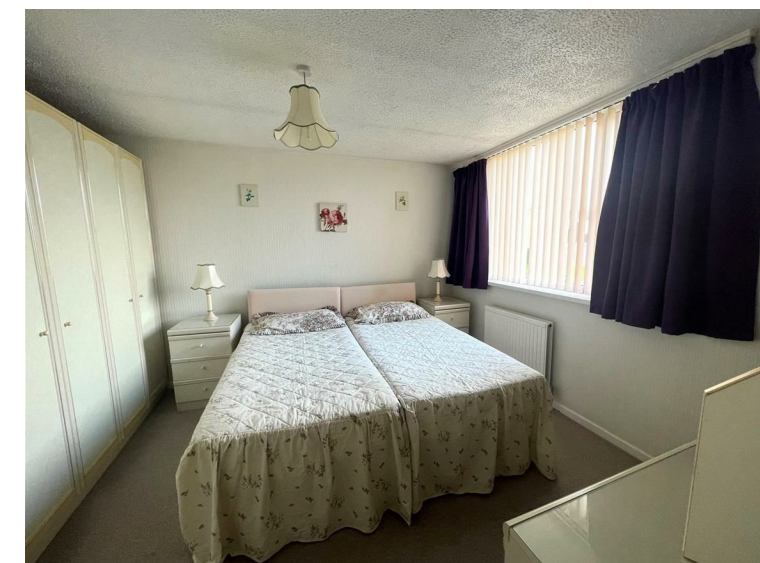
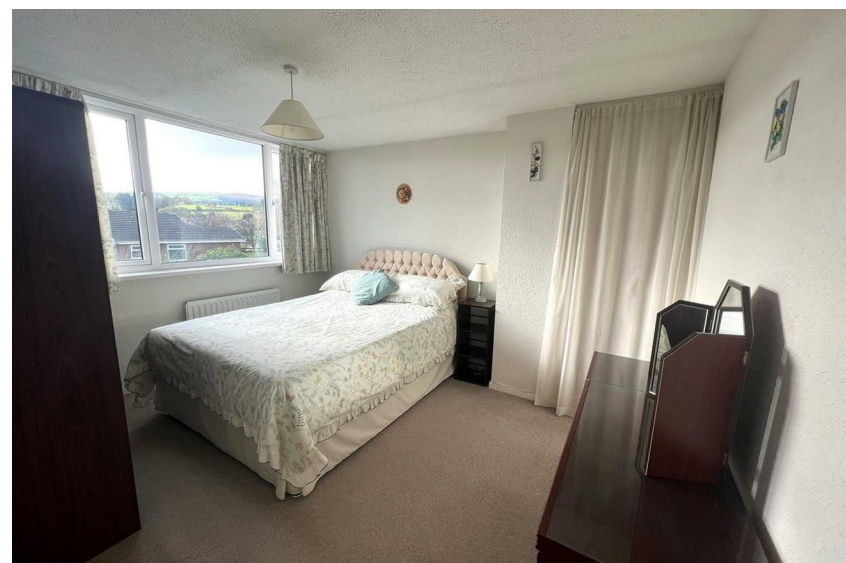
1 Reception Rooms



3 Bedrooms



1 Bath/Shower Rooms



- Spacious accommodation
- Quiet, peaceful location
- Close to town amenities
- Offers room for modernisation
- Easily maintainable gardens
- NO ONWARD CHAIN

#### GENERAL REMARKS

21 Corick's Rise is a semi-detached family home, set on the edge of the popular town of Bishops Castle. The property provides spacious accommodation, comprising 3 bedrooms, family bathroom, living room, kitchen/dining room and a cloaks/WC. Good sized gardens are located to both the front and rear of the property, laid to lawn and for ease of maintenance.

The property is ideally suited for a growing family or an investment to let.

#### SITUATION

The property is situated in the small cul-de-sac of Corick's Rise, at the top of the bank leading to Oak Meadow. The semi-detached home is located in a quiet part of the town of Bishops Castle, within walking distance of amenities. The town provides access to public transport, doctors surgery, dental practice, public houses, shops, primary and secondary school, community hall and church.

#### ACCOMMODATION

The property comprises the following accommodation:

##### ENTRANCE HALL

Double glazed entrance door, fitted carpet, radiator, doors off to:

##### CLOAKS/WC

Low flush WC, wash basin radiator and fitted carpet.

##### UNDERSTAIR STORAGE CUPBOARD

Built in shelves.

##### KITCHEN/DINING ROOM

Fitted with a range of wooden base and wall units, Beko oven and hob, space for fridge and freezer, space and plumbing for washing machine, stainless steel sink unit, worktops, part tiled walls, radiator and space for dining table, fitted carpet and large window overlooking the front garden.

##### LIVING ROOM

Fitted carpet, two radiators and fireplace, a large window with aspect to the rear garden.

##### FIRST FLOOR LANDING

With doors off and to:

##### BATHROOM

Providing a white suite comprising low flush WC, wash basin, panelled bath with shower over, radiator, fitted carpets and a small mirror fronted storage unit. A frosted window.

##### BEDROOM 1

With fitted wardrobes, fitted carpet, radiator and window to the front of the property.

##### BEDROOM 2

With fitted carpet, radiator, built in storage shelves and a large window looking out towards the pleasant aspect of the hills beyond.

##### OUTSIDE

The property is approached by a path to the side of the front garden, leading to the entrance door and also through the side gate to the rear garden. The property has beautiful gardens to both the front and rear, laid neatly to lawn and bordered by a variety of specimen plants and trees. To the rear, a small garden shed/workshop is located to the left of the garden. The rear gardens are south facing and have a lovely aspect over the hills beyond.

##### BEDROOM 3

Fitted carpets, radiator and window overlooking the rear garden.

##### SERVICES

We understand that mains water, electricity and drainage are connected with oil central heating and double glazing.

NOTE: None of the services or installations have been tested by the Agents.

##### COUNCIL TAX

Band B - Shropshire Council.

##### VIEWINGS

Strictly through the Selling Agents: Halls 33b Church Street, Bishops Castle, SY9 5AD. Tel: 01588638755. Email: bishopscastle@halls.gb.com