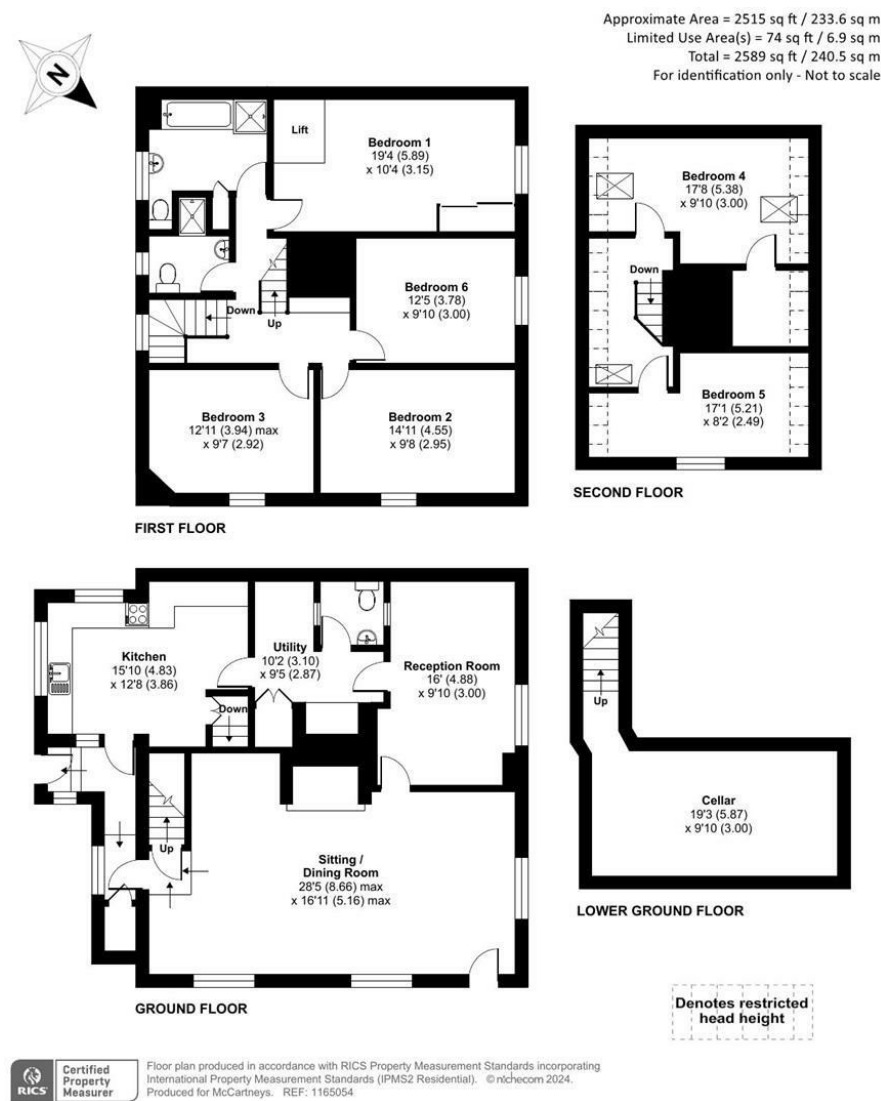


FOR SALE

1 Salop Street, Bishops Castle, Shropshire, SY9 5BW



OPEN HOUSE  
EVENT

SATURDAY 31st MAY

SUNDAY 1st JUNE

1.00pm—5.00pm

FOR SALE

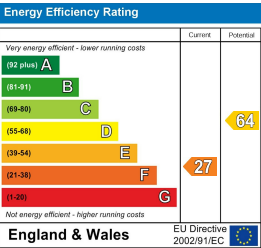
Offers in the region of £450,000

1 Salop Street, Bishops Castle, Shropshire, SY9 5BW

**Property to sell?** We would be delighted to provide you with a free no obligation market assessment of your existing property. Please contact your local Halls office to make an appointment. **Mortgage/financial advice.** We are able to recommend a completely independent financial advisor,

who is authorised and regulated by the FCA. Details can be provided upon request. **Do you require a surveyor?** We are able to recommend a completely independent chartered surveyor. Details can be provided upon request.

Energy Performance Rating



01588 638 755

Bishops Castle Sales

33b Church Street, Bishops Castle, Shropshire, SY9 5AD

E: [bishopscastle@hallsgb.com](mailto:bishopscastle@hallsgb.com)



IMPORTANT NOTICE. Halls Holdings Ltd and any joint agents for themselves, and for the Vendor of the property whose Agents they are, give notice that: (i) These particulars are produced in good faith, are set out as a general guide only and do not constitute any part of a contract (ii) No person in the employment of or any agent of or consultant to Halls Holdings has any authority to make or give any representation or warranty whatsoever in relation to this property (iii) Measurements, areas and distances are approximate, Floor plans and photographs are for guidance purposes only (photographs are taken with a wide angled / zoom lenses) and dimensions shapes and precise locations may differ (iv) It must not be assumed that the property has all the required planning or building regulation consents. Halls Holdings, Bowmen Way, Shrewsbury, Shropshire SY4 3DR. Registered in England 06597073.

[hallsgb.com](http://hallsgb.com)

Residential / Fine Art / Rural Professional / Auctions / Commercial

[hallsgb.com](http://hallsgb.com)

01588 638 755





2 Reception Rooms



6 Bedrooms



1 Bath/Shower Rooms



- An imposing period town house
- Well proportioned and characterful accommodation
- 6 Bedrooms, bathroom, separate WC, utility
- Large sitting room, Dining room, kitchen
- Cellar, delightful rear gardens and patio
- Set within a convenient central town location

**SITUATION**

The house lies within the older part of the town, in the conservation area and within walking distance of all the local amenities and services including doctors and dental surgery, schools, shops, sports and theatre centre, parks and cafes. The town sits in a beautiful part of the South Shropshire countryside, a mecca for walkers and cyclists. The larger towns of Shrewsbury and Ludlow, are within comfortable driving distance and provide a comprehensive range of amenities and access to the national road and rail network.

**ACCOMMODATION**

Arranged over three floors with a cellar, the accommodation is approached off the protected Market Square by a timber entrance door into:

**SITTING ROOM**

Dominated by a large inglenook fireplace with deep hearth and the remains of the bread oven, heavy timber ceiling beams and joists, feature stone walling, suspended timber floor, windows to two elevations over the Market Square, radiator, large wall safe, section of stone flag floor and door into the:

**DINING ROOM**

With a laminated timber floor, window out to the front, exposed beams, radiator and access into the

**INNER LOBBY**

With recessed fireplace, laminate floor and access to the electric operated lift to the first floor, storage cupboard and

**CLOAKROOM/WC**

With laminated floor, wash basin and WC.

Off the inner hallway is a further part glazed door into the:

**KITCHEN**

With vinyl floor, windows to two elevations over the rear gardens, stainless steel sink unit, a range of fitted base and wall cupboards, space for domestic appliances, radiator, access to the cellar and door to:

**REAR HALL**

With part glazed door out to the rear gardens and yard and door to a pantry cupboard and a return door to the sitting room.

Off this room is an enclosed staircase which winds itself up to the First Floor Landing with fitted carpet, exposed feature wall and doors to:

**BATHROOM**

With a low flush WC, wash basin, panelled bath, separate shower cubicle with electric shower, Dimplex wall heater, radiator, airing cupboard with hot water cylinder and immersion heater, window to the rear and Jack and Jill access to:

**BEDROOM 1**

Which has the added benefit of the disabled lift, fitted carpet, fitted storage cupboard, radiator, secondary glazed window with views between the houses beyond the town to wooded hills and fields.

**SHOWER ROOM**

WC, wash basin and shower cubicle.

**BEDROOM 2**

With window to the side overlooking the Market Square and up towards the Castle Hotel, fitted carpet and radiator.

**BEDROOM 3**

With window overlooking the Market Square, fitted carpet and radiator.

**MIDDLE BEDROOM 6**

With secondary glazed window onto Salop Street, fitted carpet and radiator.

A staircase rises from the landing to the:

**SECOND FLOOR**

With access to:

**BEDROOM 4**

With Velux rooflights to each elevation, fitted carpet and window to the gable end with distant country views

**BEDROOM 5**

With exposed ceiling beams and dormer window out onto the Market Square, fitted carpet and access to roof space.

**OUTSIDE**

The property is approached off Market Square by a shared tarmac drive through a pair of white wooden gates to a further tarmac area to the rear of the house, past the oil storage tank and trellis fencing into the more private gardens with a courtyard effect surrounded by neighbouring dwellings. This area comprises edging borders, well stocked with shrubs, and bushes with a central lawned area, lean-to store and a paved pathway and terrace, ideal for Alfresco dining. Parking is through the wooden gates.

**NOTE**

A private pedestrian right of way exists over the rear gardens in favour of three adjacent properties. Additional informal parking has been on the Market Square by custom.

**SERVICES**

Mains water, electricity and drainage are connected. Oil central heating. NOTE: None of the services or installations have been tested by the Agents.

**COUNCIL TAX**

Band D - Shropshire Council

**VIEWING**

Strictly through the Agents: Halls, 33b Church Street, Bishops Castle, SY9 5DA. Telephone: 01588 638755.

**ANTI-MONEY LAUNDERING (AML) CHECKS**

We are legally obligated to undertake anti-money laundering checks on all property purchasers. Whilst we are responsible for ensuring that these checks, and any ongoing monitoring, are conducted properly; the initial checks will be handled on our behalf by a specialist company, Movebutler, who will reach out to you once your offer has been accepted. The charge for these checks is £30 (including VAT) per purchaser, which covers the necessary data collection and any manual checks or monitoring that may be required. This cost must be paid in advance, directly to Movebutler, before a memorandum of sale can be issued, and is non-refundable. We thank you for your cooperation.