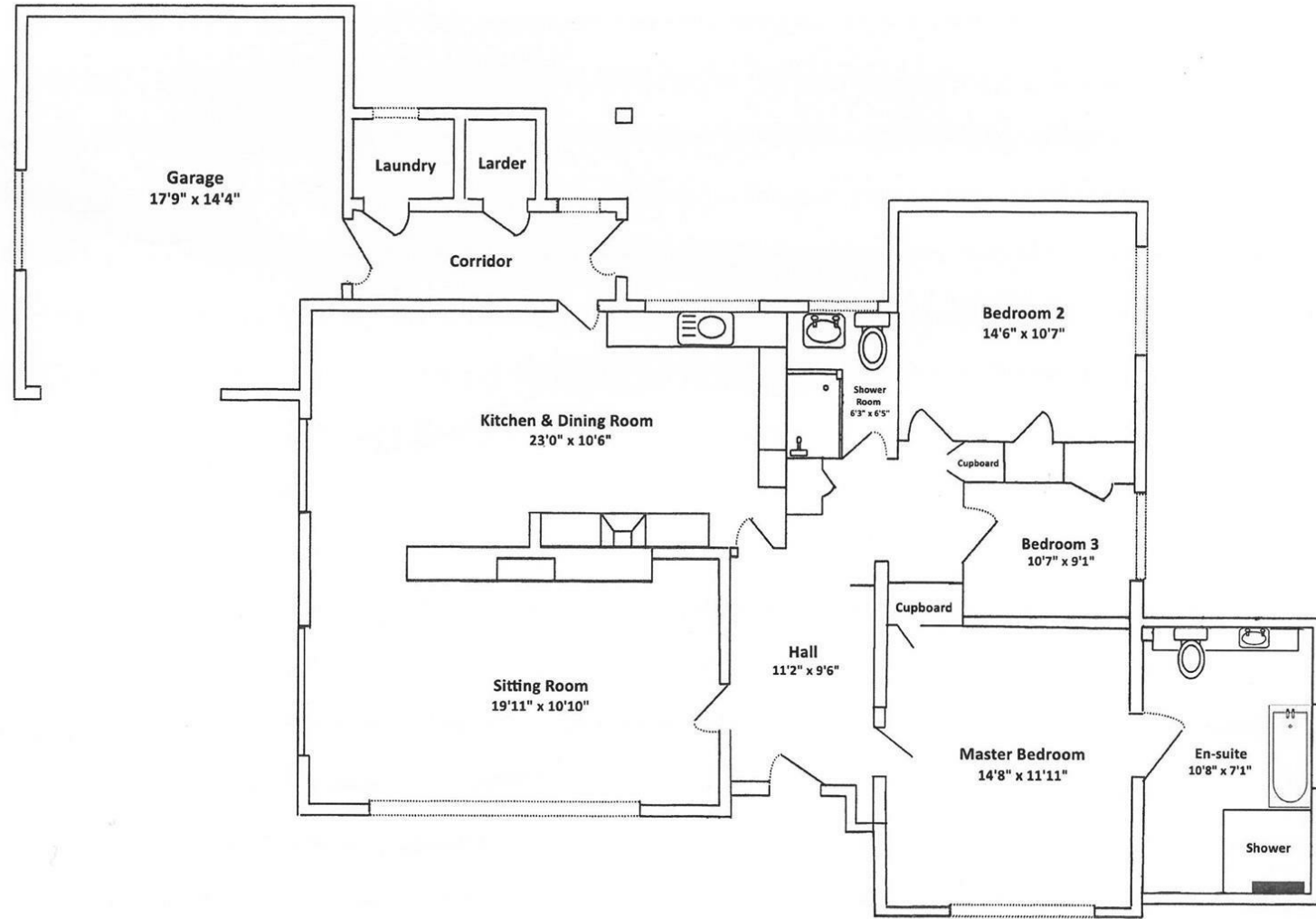


FOR SALE

The Marches Lydbury North, Shropshire, SY7 8AU



FOR SALE

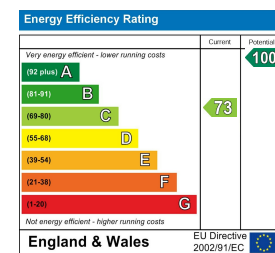
Offers in the region of £520,000

The Marches Lydbury North, Shropshire, SY7 8AU

Property to sell? We would be delighted to provide you with a free no obligation market assessment of your existing property. Please contact your local Halls office to make an appointment. **Mortgage/financial advice.** We are able to recommend a completely independent financial advisor,

who is authorised and regulated by the FCA. Details can be provided upon request. **Do you require a surveyor?** We are able to recommend a completely independent chartered surveyor. Details can be provided upon request.

Energy Performance Rating



A beautifully situated detached bungalow, boasting well presented accommodation of 3 bedrooms, en-suite bathroom, family shower room, living room, large open plan kitchen/diner, hall, utility, pantry and attached garage. Delightful private gardens with 0.48 of an acre of lawns, vegetable and fruit garden and summer house, all in a peaceful setting central to this popular village.



01588 638 755

Bishops Castle Sales
33b Church Street, Bishops Castle, Shropshire, SY9 5AD
E: bishopscastle@hallsgb.com



IMPORTANT NOTICE. Halls Holdings Ltd and any joint agents for themselves, and for the Vendor of the property whose Agents they are, give notice that: (i) These particulars are produced in good faith, are set out as a general guide only and do not constitute any part of a contract (ii) No person in the employment of or any agent of or consultant to Halls Holdings has any authority to make or give any representation or warranty whatsoever in relation to this property (iii) Measurements, areas and distances are approximate, Floor plans and photographs are for guidance purposes only (photographs are taken with a wide angled / zoom lenses) and dimensions shapes and precise locations may differ (iv) It must not be assumed that the property has all the required planning or building regulation consents. Halls Holdings, Bowmen Way, Shrewsbury, Shropshire SY4 3DR. Registered in England 06597073.



hallsgb.com

01588 638 755

hallsgb.com

Residential / Fine Art / Rural Professional / Auctions / Commercial



1 Reception Room



3 Bedrooms



2 Bath/Shower Rooms



- Well presented detached bungalow
- 3 bedrooms
- En-suite bathroom and family shower room
- Living room
- Large, open plan kitchen/diner
- Hall, utility, pantry and attached garage
- With 0.48 acres of delightful private gardens
- In peaceful setting in popular village

GENERAL REMARKS

The Marches is a well appointed detached bungalow which occupies a wonderful central position within this delightful rural village. It stands within a spacious private plot of land which extends to around 0.48 of an acre with southerly views beyond the village to the surrounding hills and woodland.

It offers much improved accommodation of 3 bedrooms, en-suite bathroom and family shower, a well presented kitchen with Aga range, open plan to a dining area which leads through to the living room with views to the gardens and beyond. A spacious hall, rear porch with larder and laundry, complete the internal living quarters.

There is plenty of off-road parking together with the attached garage and a charming summer house, to enjoy the extensive gardens, laid predominantly to lawns with well stocked borders, pond and re-wilded corners, vegetable and fruit patch, orchard trees and terraces from which to enjoy this peaceful setting.

SITUATION

The property is located in the heart of this ever popular village but retains a good degree of privacy, set within its grounds and accessed by a private drive. The village is well served with a strong community spirit which supports the impressive village hall, community shop, public house, church and primary school. The surrounding area is full of scenic landscapes and the nearest town of Bishops Castle is just 4 miles away. The nearest station is in Craven Arms and the towns of Shrewsbury and Ludlow, are within comfortable driving distance.

ACCOMMODATION

Approached from the village lane over a culvert bridge, a private drive leads to the parking area and attached garage. To the front is a raised sun terrace with access into the:

ENTRANCE HALL

13'5" x 10'9" (4.09m x 3.28m)

With radiator, timber laminate floors, two useful cupboards, feature brick wall and several doors off to:

KITCHEN/DINING ROOM

23'0" x 10'8" (7.01m x 3.25m)

With attractive solid tiled floor, an oil Aga range, granite worktops inset with Belfast sink, 'NEFF' ceramic hob and double oven. Range of wall and base units, integrated dishwasher, radiator and downlighter.

An opening leads into the:

LIVING ROOM

19'11" x 12'4" (6.07m x 3.76m)

With LPG gas, flame effect fireplace, fitted carpet, windows to two elevations and four wall light points.

Again, off the Hall is the:

SHOWER ROOM

6'5" x 6'3" (1.96m x 1.91m)

Fully tiled with corner cubicle with mixer shower, wash basin, WC and stainless steel radiator.

BEDROOM 1

14'5" x 12'0" (4.39m x 3.66m)

With fitted carpet, views over the gardens and towards wooded hillsides beyond, radiator and recessed lit cupboard.

EN-SUITE BATHROOM

10'8" x 7'1" (3.25m x 2.16m)

Fitted with a good quality suite of Victorian style bath, walk-in shower, vanity unit inset with WC and wash basin, cupboards above and below, half-timbered walls, tiled floors and downlighters.

BEDROOM 2

14'8" x 10'7" (4.47m x 3.23m)

With windows to side gardens, radiator, fitted carpet and recessed wardrobe.

BEDROOM 3

10'7" x 10'0" (3.23m x 3.05m)

With window to side garden, radiator, fitted carpet and recessed wardrobe.

Off the Kitchen is the:

REAR HALL

14'11" x 4'7" (4.55m x 1.40m)

With solid tiled floor, door to gardens and:

LARDER

4'1" x 4'6" (1.24m x 1.37m)

With shelving.

LAUNDRY

4'0" x 4'11" (1.22m x 1.50m)

With stainless steel sink unit and plumbing for a washing machine.

GARAGE

18'0" x 14'6" (5.49m x 4.42m)

With concrete floor, power and light, raised storage, 'Firebird' oil central heating boiler and pressurised cylinder and electric roller door.

OUTSIDE

The property is approached over a concrete culvert along a private tree lined tarmac drive, leading to a large parking area to the front of the bungalow and garage. A paved patio leads to the front entrance, whilst the garden lies mainly to the front and one side and are laid to large lawned areas. Floral borders with a paved sun terrace to the front of the house and ornamental stocked fish pond and re-wilded area to two corners. There are several fruit trees and a productive vegetable garden with raised beds, fruit cages and garden sheds.

To the rear is a further paved area with log store and oil storage tanks.

Set to one side of the grounds is a substantial timber framed Summer House, wood-lined with electric power and light (3.6m x 3.66m).

SERVICES

Mains water, electricity and drainage are thought to be connected, double-glazing and oil central heating and LPG fire.

NOTE: None of the services or installations have been tested by the Agents.

COUNCIL TAX

Band E, Shropshire Council.

VIEWING

Strictly through the Agents: Halls, 33b Church Street, Bishops Castle, SY9 5DA. Telephone: 01588 638755.

DIRECTIONS

From Bishops Castle proceed to Lydbury North and in the village turn left immediately after the primary school. Continue up this lane and after 100 yards, before the entrance to the village hall, the entrance to The Marches is signed on the right.

What3Words: sticky.hockey.voltage

MONEY LAUNDERING REGULATIONS

On putting forward an offer to purchase, you will be required to provide evidence of funding together with adequate identification to prove your identity within the terms of the Money Laundering Regulations (MLR 2017) E.G. Passport or photographic driving license and recent utility bill.