



## Room 4, 35 Lawrence Road, Southsea, Portsmouth, PO5 1NU

£665 PCM

- LUXURY EN SUITE ROOM
- AUTOMATIC PASSIVE LIGHTING
- GAS CENTRAL HEATING
- PROFESSIONAL SHARERS HOUSE
- LARGE DESIGNED KITCHEN
- BILLS INCLUDED
- ENCLOSED REAR GARDEN

Directions

194 Albert Road, Southsea, Hampshire, PO4 0JT  
02392 811854

Viewings

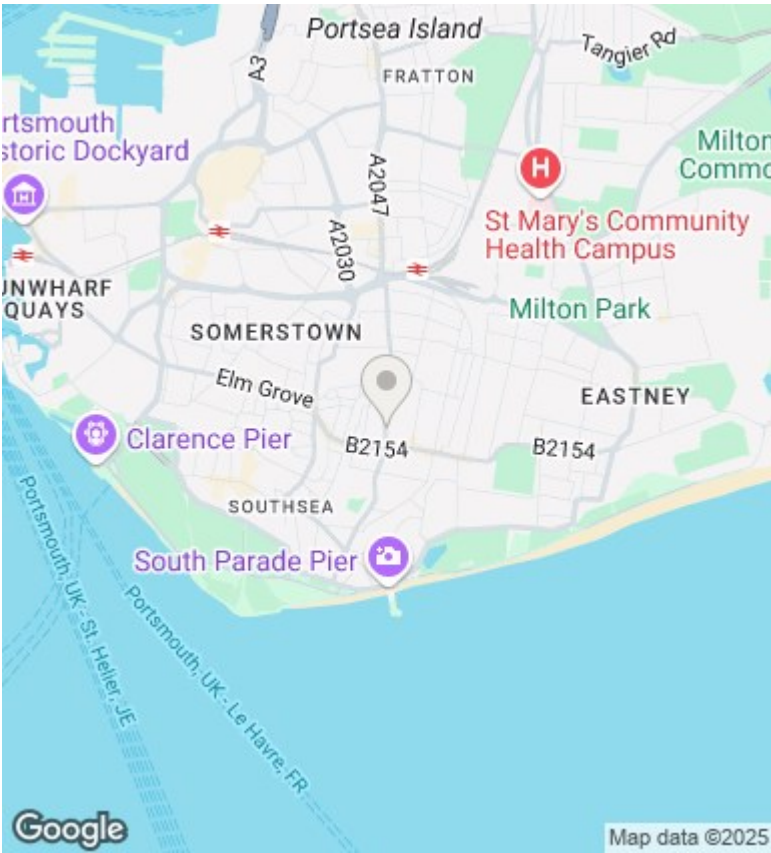
Viewings by arrangement only. Call 02392 811854 to make an appointment.

Council Tax Band

C

EPC Rating:

D



Energy Efficiency Rating		
	Current	Potential
Very energy efficient - lower running costs		
(92 plus) A		
(81-91) B		81
(69-80) C	65	
(55-68) D		
(39-54) E		
(21-38) F		
(1-20) G		
Not energy efficient - higher running costs		
England & Wales		EU Directive 2002/91/EC

mail@neweraagency.co.uk  
www.neweraagency.co.uk