

ROSELAND COTTAGE

LEOMINSTER ROAD, DYMOCK, GL18 2AN



ROSELAND COTTAGE



Situation





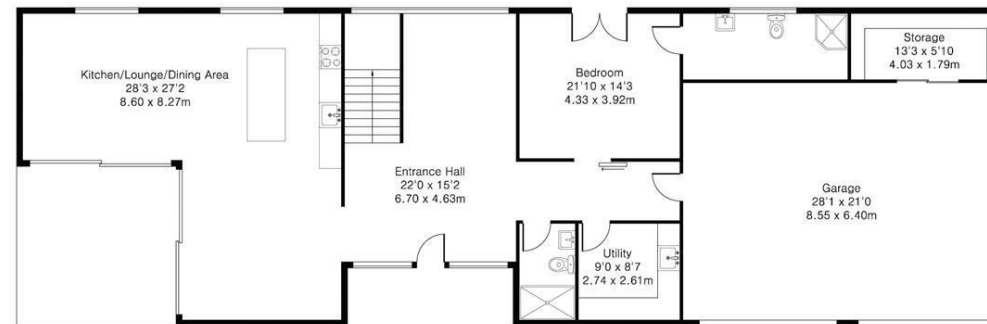
General Information



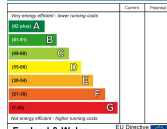
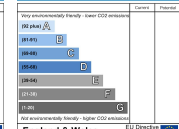
Approximate Gross Internal Area 3530 sq ft – 328 sq m
 Garage Area 590 sq ft – 55 sq m
 Total Area 4120 sq ft – 383 sq m



First Floor
 2066 Sq.ft (192 Sq.m)



Ground Floor
 1464 Sq.ft (136 Sq.m)

| Energy Efficiency Rating | | Environmental Impact (CO ₂) Rating | |
|---|-------------------------|--|-------------------------|
| Current | Potential | Current | Potential |
|  Energy efficient - lower running costs A B C D E F G Energy inefficient - higher running costs | |  Very low environmental impact - lower CO ₂ emissions A B C D E F G High environmental impact - higher CO ₂ emissions | |
| England & Wales | EU Directive 2002/91/EC | England & Wales | EU Directive 2002/91/EC |

103 Promenade, Cheltenham, Gloucestershire, GL50 1NW

T: 01242 222722 | E: sales@charleslear.co.uk | W: www.charleslear.com