

1 BELMORE PLACE, ST. LUKES,
CHELTENHAM, GLOUCESTERSHIRE, GL53 7JU

 Charles Lear



1 BELMORE PLACE

In a peaceful position in the heart of St. Lukes, this terraced townhouse has accommodation extending to more than 1,200sq.ft. which is arranged over three floors including four bedrooms and two bathrooms. To the rear of the house is a small patio garden.

DESCRIPTION

1 Belmore Place is presently utilised as a successful short term rental property. Set back from Bath Road and along a quiet backwater, this period house has a front door leading into a spacious reception room with the original staircase rising to the first floor. The ground floor also offers a modern kitchen and separate dining room which both open into a patio garden. The first floor provides two excellent double bedrooms and a modern bathroom, whilst the second floor offers two further double bedrooms including a generous contemporary en-suite.

SITUATION

Belmore Place is within a short walk to a variety of amenities on Bath Road whilst the architecturally inspiring Promenade is within a short stroll. The High Street, which offers a diverse range of shops and department stores, is also within a short walk, as is Montpelier, which offers a vast array of bars, boutiques, cafes and restaurants to choose from. The town is famous for its schooling, many of which are within walking distance, along with an array of festivals including Literature, Jazz, Music and Science whilst Prestbury Park plays host to National Hunt racing.





GENERAL INFORMATION

Services:

Mains water, electricity, gas and drainage are connected to the property.

Local Authority:

Cheltenham Borough Council: 01242 262626

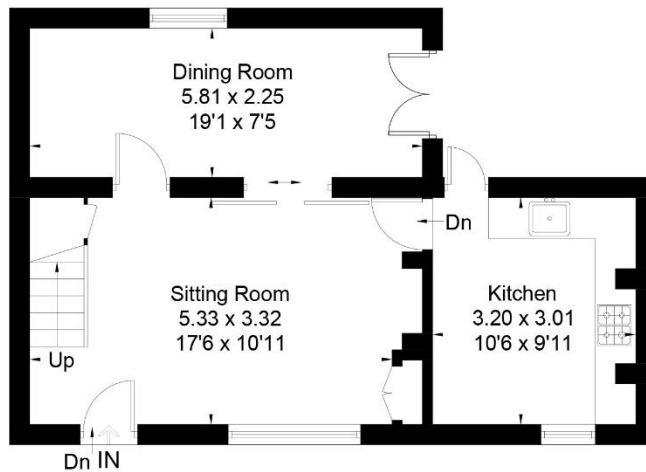
Council Tax Band: (C) – £1,907.18 (2024/2025).

VIEWINGS

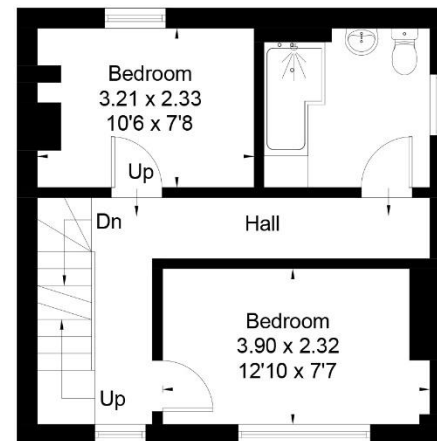
Strictly by prior appointment through the sole agents, Charles Lear & Co. on 01242 222722.



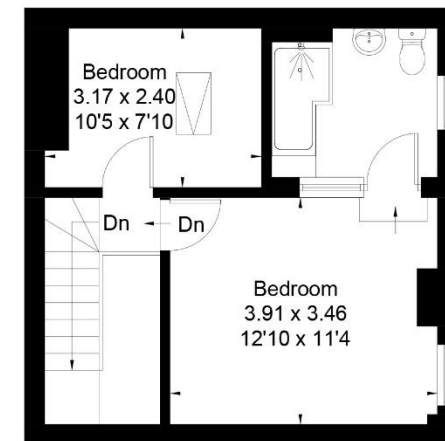
Approximate Floor Area = 112.6 sq m / 1212 sq ft



Ground Floor



First Floor



Second Floor



This floor plan has been drawn in accordance with RICS Property Measurement 2nd edition.
All measurements, including the floor area, are approximate and for illustrative purposes only. @fourwalls-group.com #73509