



Flat 3, 2 Minster Street, Salisbury





# A recently converted two bedroom apartment located on the third floor of a period city centre building.

Flat 3 2 Minster Street,  
Salisbury, SP1 1TF

PCM  
£1,150 PCM



A very well presented third floor flat in a recently renovated building in the heart of Salisbury city centre. The accommodation consists of: Communal entrance stairs to all flats, the flats private entrance on the second floor leads up to a landing with door to the kitchen. Located in the eaves the kitchen has integrated appliances including slimline dishwasher, under counter fridge, electric oven and ceramic hob. The units are shaker style with a stylish grey wood effect flooring.

## Features

- Period City Centre building
- Recent conversion
- Shower room
- Two bedrooms
- Quality built in appliances
- No parking available

## Tenancy & Restrictions

To be let unfurnished on an Assured Shorthold Tenancy (minimum term of 12 months, thereafter on a monthly basis). No smokers or sharers.

## EPC Rating

D (57)

## Outgoings

Council Tax: Wiltshire Council Band A

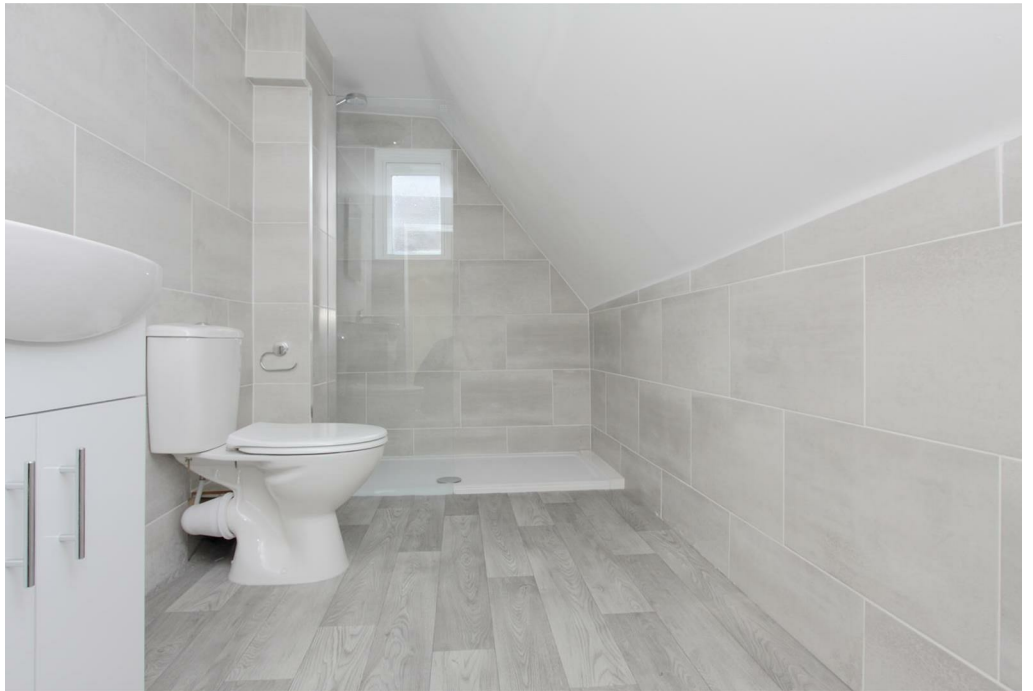
## Size

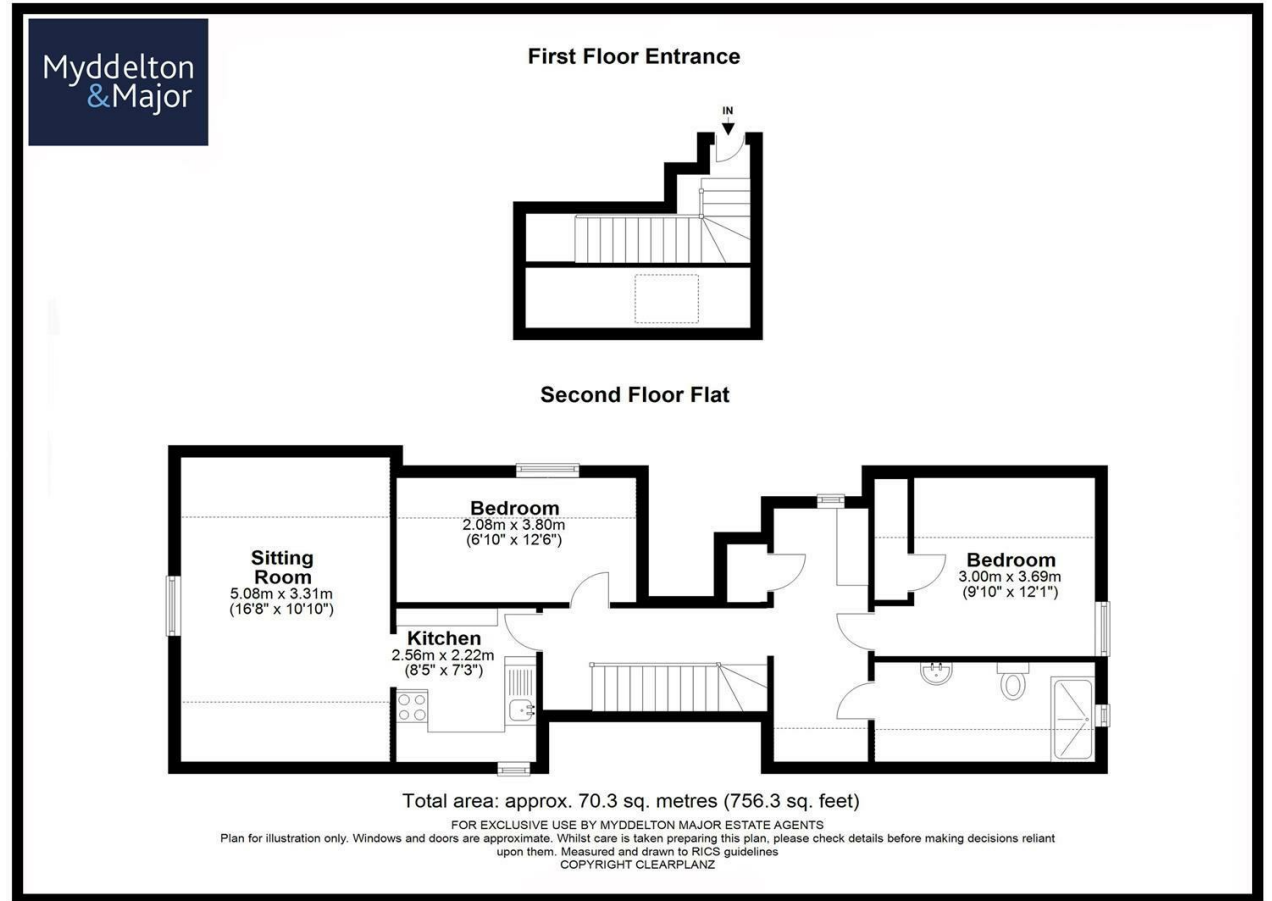
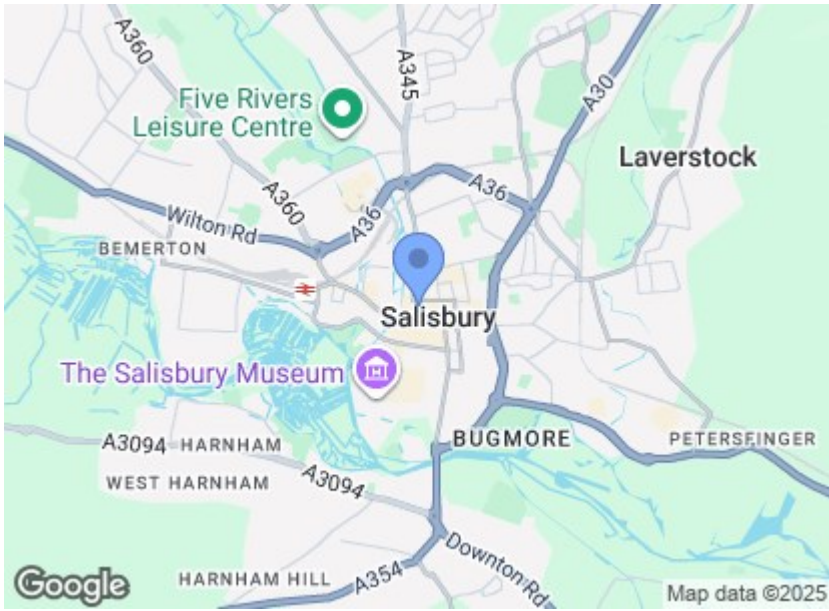
756 sq ft

Off the kitchen is the living room with a window which overlooks the market square. There is a single bedroom and across the landing is a utility space, with utility cupboard, units matching the kitchen which house the integrated freezer and washer/dryer. From here there are doors to the double bedroom with built in wardrobe and shower room with a white suite of walk in shower, sink unit and WC, tiled walls and a grey wood effect flooring.

The flat has electric heating, an air circulation system and telephone entry system for the front door on Minster Street. There are integrated white goods, otherwise the property is unfurnished and tenants will need to be mindful that there is some restrictive access for larger items of solid furniture.

Right in the heart of Salisbury's city centre, 2 Minster Street overlooks the market square and forms part of the medieval chequer system of Salisbury, convenient for all the city's excellent range of facilities – shopping, educational, cultural and leisure as well as the mainline station with trains to London Waterloo (journey time approximately 90 minutes). Salisbury also supports a well thought of playhouse and a twice weekly market.





**Disclaimer Notice** Myddelton & Major and their clients give notice that:- i) they have no authority to make or give any representations or warranties in relation to the property, ii) these particulars do not form part of any offer or contract and must not be relied upon as statements or representations of fact. iii) any areas, measurements or distances are approximate. The text, photographs and plans are for guidance only and are not necessarily comprehensive. It should not be assumed that the property has all the necessary planning, Building Regulation or other consents, and, any services, equipment or facilities have not been tested by the agent. iv) the purchaser must satisfy themselves by inspection or otherwise.