



Mecure Salisbury Apartments, 1 St John Street

Myddelton&Major



NIGHTLY RATES Brand new serviced apartments at Mercure Salisbury White Hart Hotel, providing outstanding short term accommodation, featuring full hotel amenities and private parking.

- Brand new apartments
- Self catered and serviced
- Access to all hotel facilities
- Private parking
- Size and accessibility options
- Fully furnished and equipped
- Central location
- Discounted pricing for longer stays

Size: approx. 346 sq ft

Council Tax: N/A



1



1



1



1

Mercure Salisbury, 1 St John Street, Salisbury, SP1 2SD

The Property

The Standard apartments are an appealing option for two guests, offering extra privacy afforded by the private lounge area and small kitchen. Please note this is an example floorplan and is not applicable for all apartments of this type.

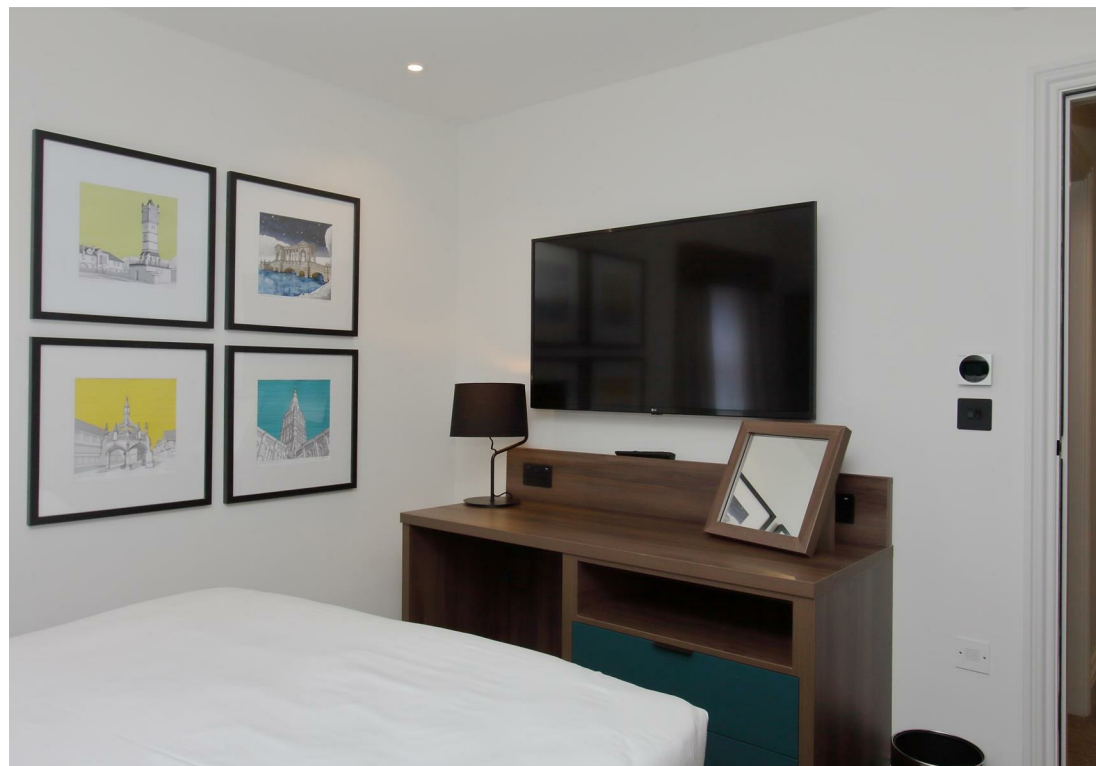
These self-catered apartments provide well-proportioned, light and airy accommodation comprising a comfortable living/kitchen/dining room, a modern shower room, and separate double bedroom. Each apartment comes fully furnished with an induction hob, dishwasher, fridge and microwave oven, alongside complimentary cookware and equipment such as a toaster and kettle. Each apartment is serviced to the same high standard as the hotel, with full use of the hotel's facilities such as daily housekeeping, parking, Wi-Fi, laundry, room service, and access to the bar/restaurants. While each apartment has a maximum occupation limit of 29 days, your stay can be extended by moving into another room at no additional fee (subject to apartment sizes and availability). Additional apartment sizes and accessibility options are also available:

The Large apartments provide additional space for more enjoyable living, with the option of purpose-built Accessible Apartments on the ground floor benefitting from a full wet room.

The Family apartments come with an extendable sofa bed in the living room for an additional two occupants, providing excellent private living for up to 4 guests.

Location

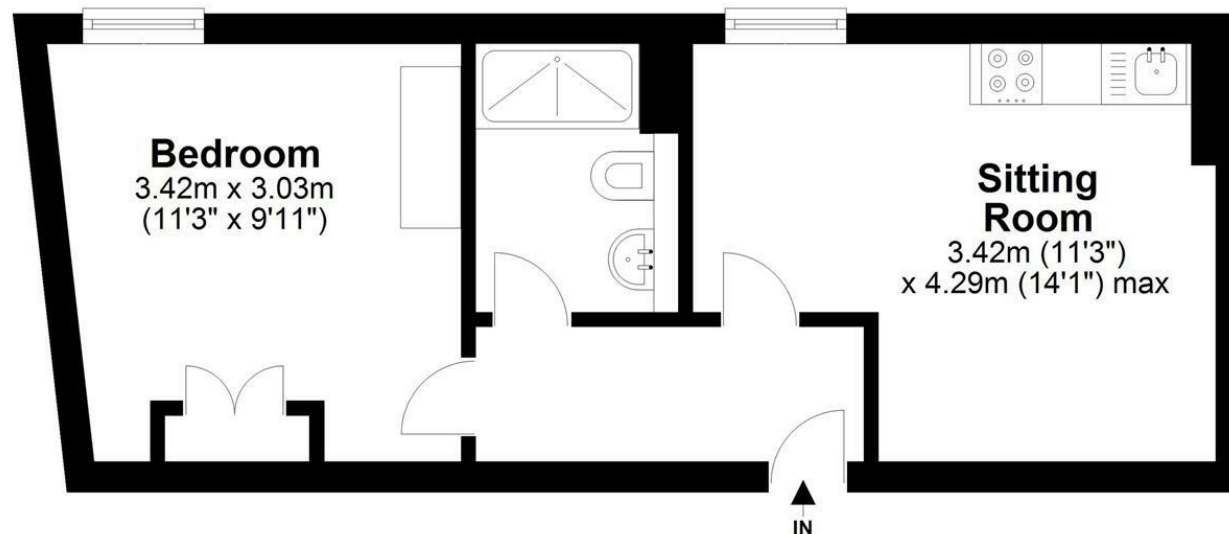
The Mercure Salisbury Apartments are set off an elegant Grade II listed building, located right in the heart of the cathedral city of Salisbury. The historic 4-star White Hart Hotel dates back to the 1600s, and these 12 brand new apartments make an ideal short-term base for those selling or purchasing a property, or those looking to move into the area, tour the city and visit family and friends. The central location provides guests with an excellent range of restaurants and independent shops close by, being a short walk from Salisbury's excellent range of cultural, education and shopping amenities. This is also within a 15 minute walk of the mainline train station to London Waterloo (approximately 90 minutes).





Myddelton
& Major

Ground Floor



Total area: approx. 32.1 sq. metres (346.0 sq. feet)

COPYRIGHT CLEARPLANZ

Plan for illustration only. Windows and doors are approximate. Whilst care is taken preparing this plan, please check details before making decisions reliant upon them. Measured and drawn to RICS guidelines

EXAMPLE FLOORPLAN

Disclaimer Notice:

Myddelton & Major and their clients give notice that:- i) they have no authority to make or give any representations or warranties in relation to the property, ii) these particulars do not form part of any offer or contract and must not be relied upon as statements or representation of fact. iii) any area, measurement or distances are approximate. The text, photographs and plan are for guidance only and are not necessarily comprehensive. It should not be assumed that the property has all the necessary planning, Building Regulation or other consents, and, any services, equipment or facilities have not been tested by the agent. iv) the purchaser must satisfy themselves by inspection or otherwise.



49 High Street, Salisbury, Wiltshire SP1 2PD
01722 337 579 lettings@myddeltonmajor.co.uk
www.myddeltonmajor.co.uk

Myddelton & Major