



Rollestone Street, Salisbury

Myddelton & Major



Rent: £1,300 PCM

VIEWINGS SUSPENDED DUE TO HIGH DEMAND

A well presented 3 bedroom town house, in a prime position in the city centre, with a courtyard garden.

The accommodation includes: living room, kitchen, first floor - landing, double bedroom, single bedroom and shower room; second floor - double bedroom. Courtyard garden and permit parking.

Size: 860 sq ft

Council Tax: Wiltshire £2245.28
(2024/25), Band C



3



1



1



Permit
parking
if
allowed

Dilapidation Deposit: Equivalent to 5 weeks' rent, to be held by The Deposit Protection Service for the duration of the tenancy.

Holding Deposit: Equivalent to one weeks' rent.

Services: Mains gas, electricity, water and telephone.

Other Fees: See Website.

46 Rollestone Street, Salisbury, Wiltshire, SP1 1ED

- City centre location
- Recently fitted shower room
- Courtyard
- Three bedrooms
- Light and airy accommodation

The Property

A well presented 3 bedroom town house, in a prime position in the city centre, with a courtyard garden.

The accommodation includes: living room, kitchen, first floor - landing, double bedroom, single bedroom and shower room; second floor - double bedroom. Courtyard garden and permit parking.

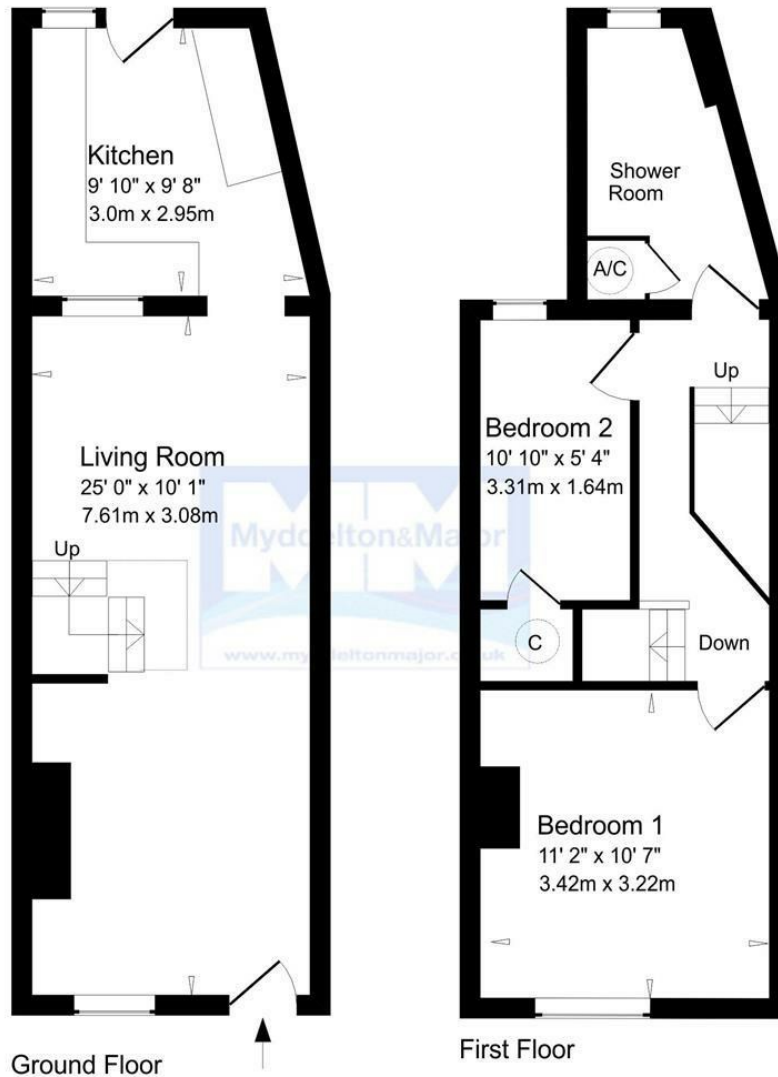
Location

Rollestone Street is part of Salisbury's Medieval Chequer system and is a short, level walk from all of the city's excellent range of facilities – shopping, leisure and cultural. The market square, which has a twice weekly charter market, lies at the end of Endless Street whilst Salisbury also has a mainline train station with trains to London Waterloo (journey time approximately 90 minutes).

Tenancy & Restrictions

To be let unfurnished on an Assured Shorthold Tenancy (minimum term of 12 months, thereafter on a monthly basis). No smokers or sharers.





Ground Floor
 First Floor
 Second Floor

Approximate Gross Internal Floor Area 860 Sq. Ft./ 80 Sq. M
 Measurements quoted are to IPMS: Residential 2
 For indicative purposes only. Copyright Jemesis Ltd 2020
 Drawing Number : 164-00

Energy Efficiency Rating		Current	Potential
Very energy efficient - lower running costs			
(92 plus)	A		83
(81-91)	B		
(69-80)	C	70	
(55-68)	D		
(39-54)	E		
(21-38)	F		
(1-20)	G		
Not energy efficient - higher running costs			
England & Wales		EU Directive 2002/91/EC	

Disclaimer Notice:

Myddelton & Major and their clients give notice that:- i) they have no authority to make or give any representations or warranties in relation to the property, ii) these particulars do not form part of any offer or contract and must not be relied upon as statements or representation of fact. iii) any area, measurement or distances are approximate. The text, photograph and plan are for guidance only and are not necessarily comprehensive. It should not be assumed that the property has all the necessary planning, Building Regulation or other consents, and, any services, equipment or facilities have not been tested by the agent. iv) the purchaser must satisfy themselves by inspection or otherwise.



49 High Street, Salisbury, Wiltshire SP1 2PD
 01722 337 579 lettings@myddeltonmajor.co.uk
 www.myddeltonmajor.co.uk

Myddelton & Major