



Devizes Road, Salisbury

Myddelton & Major



61b Devizes Road, Salisbury Wiltshire, SP2 7LQ

- Share of Freehold Apartment
- Convenient City Centre Location
- Private Access
- Allocated Off-Road Parking
- Entire First Floor and Loft
- Three Double Bedrooms
- Ideal as a Pied-à-Terre
- Perfect First Property

The Property

61b Devizes Road is a generously sized apartment, primarily set over the first floor of a period property that had been converted into two dwellings by reputable building firm Mouldings in the 80's. The property is privately accessed via a porch/conservatory on the ground floor, with a hallway and stairs to the first floor beyond. The property comprises an 18ft galley kitchen, spacious sitting room with a south facing window providing an abundance of natural light, three large double bedrooms and the bathroom. Due to the larger than average size of the bedrooms the accommodation offers flexibility in it's arrangement, as any of the bedrooms could quite comfortably be used as a reception room if required.

Externally, there is a courtyard area surrounding the porch/conservatory for private use, and an allocated off-road parking space.

Location

Devizes Road is a traditional Victorian Street with plenty of character and community, whilst only a short distance away from the railway station. Salisbury boasts a well-thought of Playhouse and twice-weekly charter market, with a plethora of restaurants, shopping, and leisure facilities. There is a number of primary and secondary schools, both private and state, including boys and girls grammar schools. Salisbury has excellent road links to London and the West Country, Southampton and Bournemouth, and provides direct trains to London Waterloo, Bristol and Bath from Salisbury mainline railway station.

A generously sized city centre apartment, with three double bedrooms, a separate kitchen and sitting room, and allocated off road parking.

Tenure: Share of Freehold

Size: 1,204 ft²

EPC Rating: D (55)

Council Tax Band: B



3



1



1



1

Lease Term: 175 Years from 2016

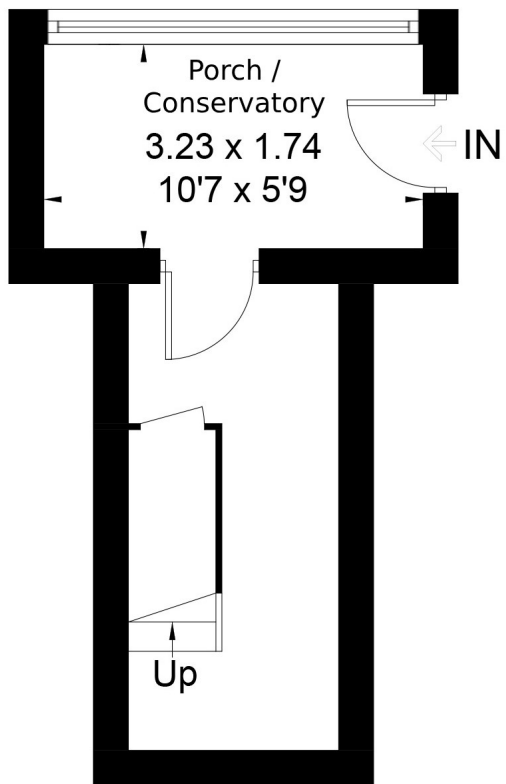
Ground Rent: £50.00 p/a

Service Charge: 50% share of maintenance costs, paid on an ad hoc basis.

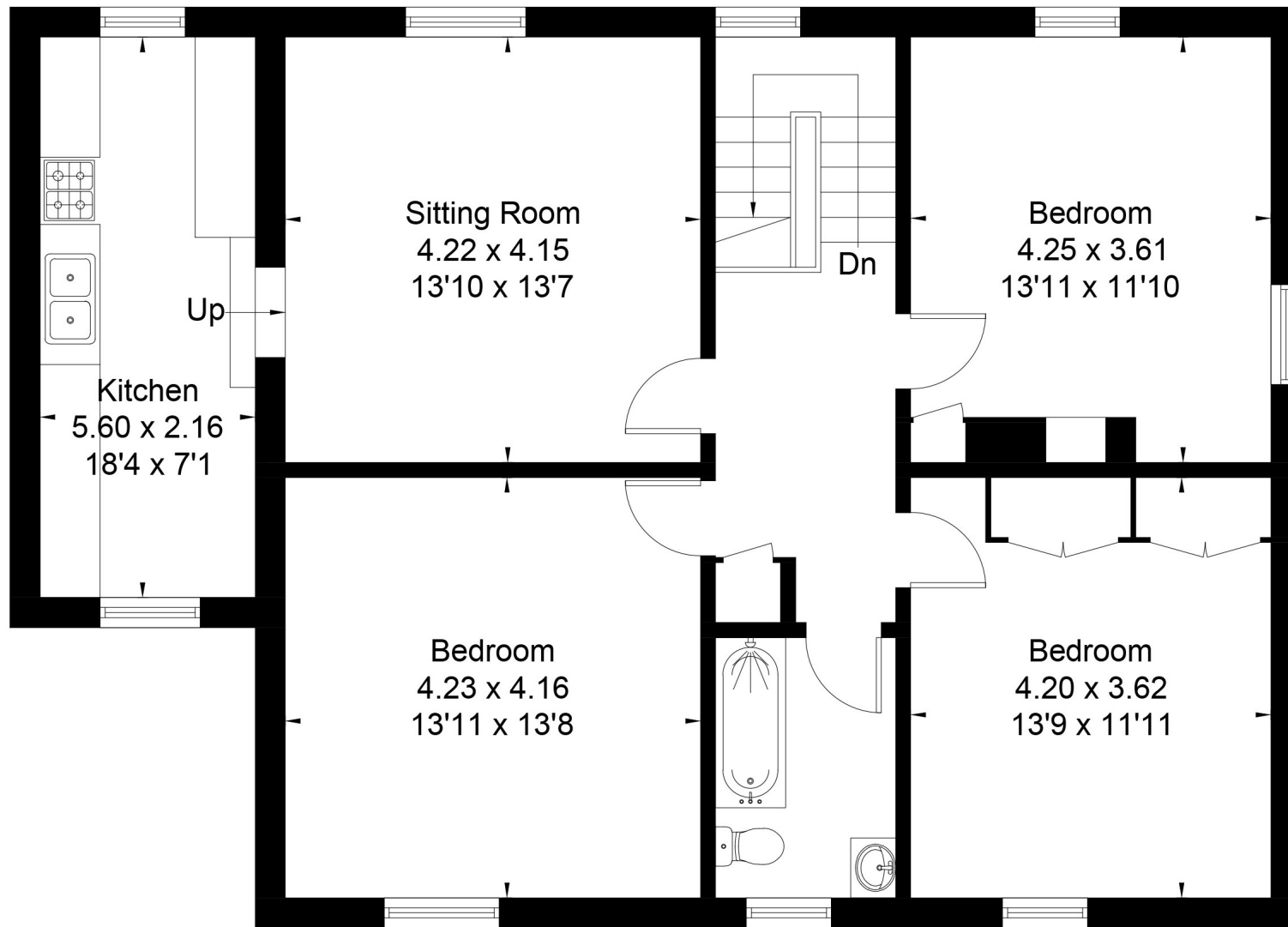




Approximate Area = 111.9 sq m / 1204 sq ft



Ground Floor



First Floor

Surveyed and drawn in accordance with the International Property Measurement Standards (IPMS 2: Residential) fourwalls-group.com 320897

Disclaimer Notice

Myddelton & Major and their clients give notice that:- i) they have no authority to make or give any representations or warranties in relation to the property, ii) these particulars do not form part of any offer or contract and must not be relied upon as statements or representations of fact. iii) any areas, measurements or distances are approximate. The text, photographs and plans are for guidance only and are not necessarily comprehensive. It should not be assumed that the property has all the necessary planning, Building Regulation or other consents, and, any services, equipment or facilities have not been tested by the agent. iv) the purchaser must satisfy themselves by inspection or otherwise.



49 High Street, Salisbury, Wiltshire SP1 2PD
01722 337 575 residential@myddeltonmajor.co.uk
www.myddeltonmajor.co.uk

Myddelton & Major