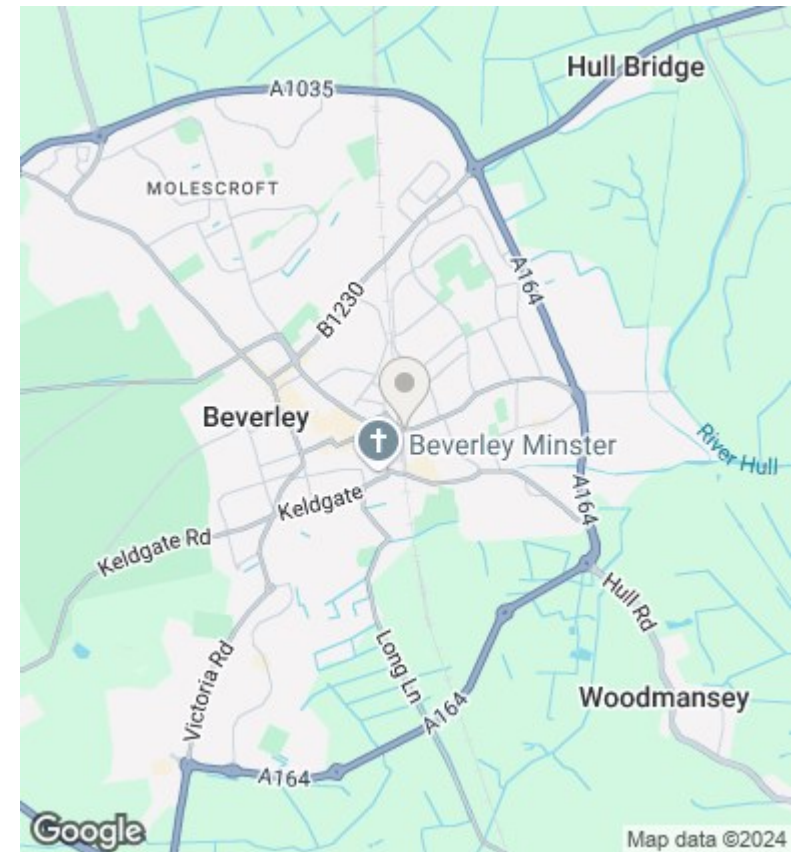
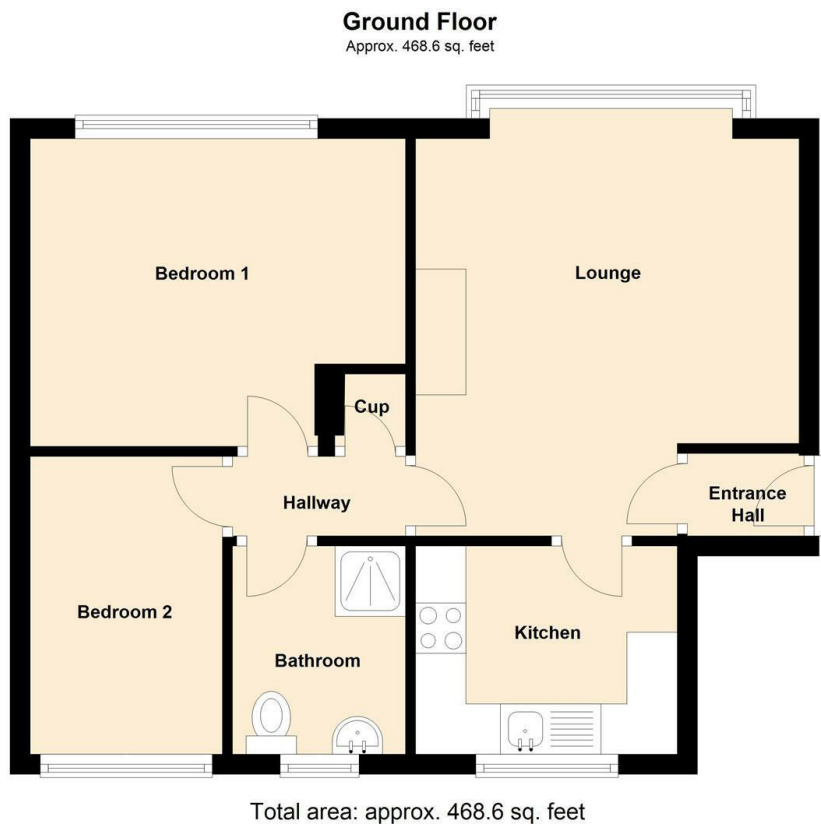




18 Trinity Court, Grovehill Road, Beverley, HU17 0EB

£120,000

- Popular Residential Area of Beverley
- Spacious Lounge with Feature Fireplace
- Allocated Parking Space
- Own Private Entrance
- Walking Distance to Flemingate & Train Station
- High Spec Shower Room
- GROUND FLOOR
- Two Double Bedrooms
- Fitted Kitchen with Appliances
- Council Tax Band A



Directions

Viewings

Viewings by arrangement only.
Call 01482307007 to make an appointment.

Council Tax Band

C

EPC Rating:

D

Energy Efficiency Rating		
	Current	Potential
<i>Very energy efficient - lower running costs</i>		
(92 plus) A		
(81-91) B		73
(69-80) C		
(55-68) D	59	
(39-54) E		
(21-38) F		
(1-20) G		
<i>Not energy efficient - higher running costs</i>		
England & Wales	EU Directive 2002/91/EC	