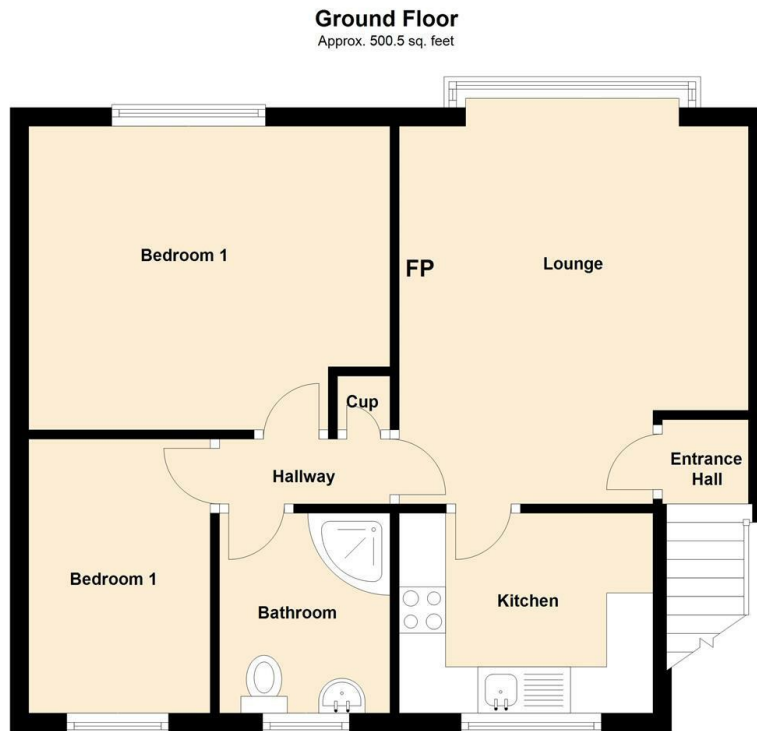


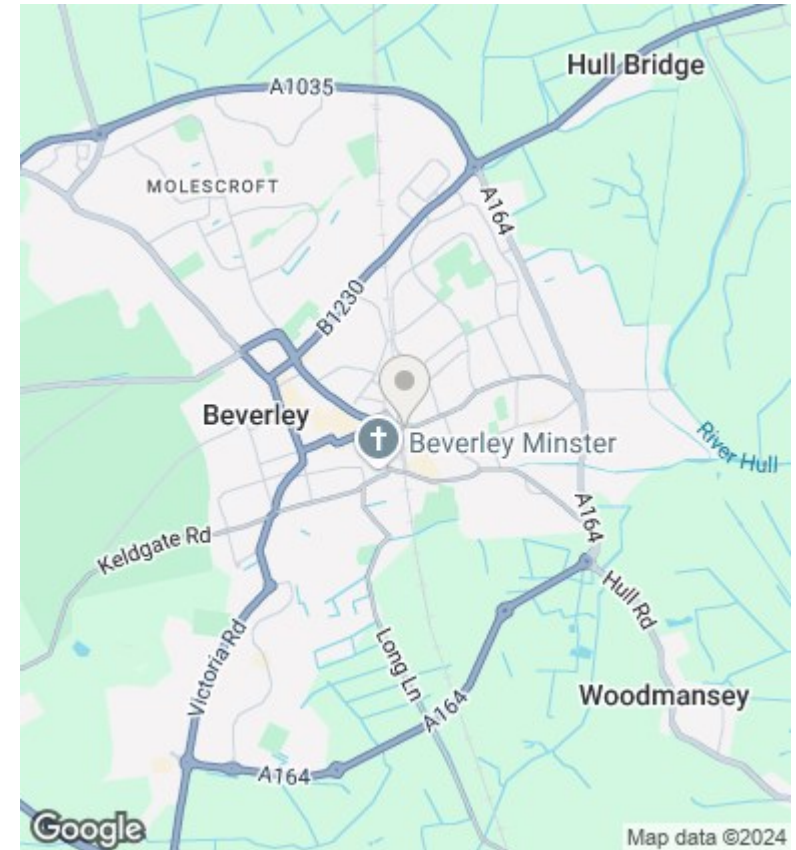


## 19 Trinity Court, Grovehill Road, Beverley, East Yorkshire, £120,000

- Modern Apartment with Own Entrance
- Spacious Lounge with Large Bay Window
- Located Close to Flemingate Shopping Complex
- Two Double Bedrooms
- First Floor Apartment
- Council Tax Band A
- Fitted Kitchen
- Parking Space Included
- Quiet Residential Location



Total area: approx. 500.5 sq. feet



## Directions

## Viewings

Viewings by arrangement only.  
Call 01482307007 to make an appointment.

## Council Tax Band

C

## EPC Rating:

D

Energy Efficiency Rating		
	Current	Potential
<i>Very energy efficient - lower running costs</i>		
(92 plus) <b>A</b>		
(81-91) <b>B</b>		74
(69-80) <b>C</b>		
(55-68) <b>D</b>	62	
(39-54) <b>E</b>		
(21-38) <b>F</b>		
(1-20) <b>G</b>		
<i>Not energy efficient - higher running costs</i>		
<b>England &amp; Wales</b>	EU Directive 2002/91/EC	