

Branches Lane, Holbeach

£850 PCM



14 Church Street, Holbeach, Lincolnshire, PE12 7LL

t: 01406 424441 e: info@letsgetyoumoving.co.uk www.letsgetyoumoving.co.uk

Registered Office: 14 Church Street, Holbeach, Lincolnshire, PE12 7LL

Company Registration No: 5813080 VAT Reg No: 921 0444 66



This well-presented two-bedroom semi-detached home is available to let just outside Holbeach, conveniently situated on the 505 bus route. Offering off-road parking, a spacious lounge, kitchen-diner, and a handy utility area, the property also features attractive front and rear gardens. Ideal for professionals or small families seeking countryside living with easy access to town amenities. A deposit of £980.76 is required, and all prospective tenants will be fully referenced. NO PETS.

Accommodation Comprises:

PVCu double glazed entrance door to:

Entrance Hall

Ceramic tiled flooring, under stairs storage cupboard, power point, PVCu double glazed window to side, radiators, door to:

Lounge 3.66m (12') x 3.57m (11'9")

PVCu double glazed bow window to front, fireplace, radiator, ceramic tiled flooring, TV point, central heating thermostat, broadband connection point, cupboards and shelving, coving to ceiling, door to stairs and first floor landing.

Kitchen/Dining Room 4.55m (14'11") max x 3.92m (12'10") max

Fitted with a matching range of base units with worktop space over, stainless steel sink unit with single drainer and mixer tap, space for fridge, electric point for cooker with extractor hood, PVCu double glazed window to rear and side, radiator, ceramic tiled flooring, coving to ceiling with smoke detector, open plan to:

Utility 1.95m (6'5") x 1.24m (4'1")

Fitted eye level cupboards with worktop space over, plumbing for automatic washing machine, space for tumble dryer, PVCu double glazed window to side, door to:

Cloakroom

PVCu double glazed window to rear, fitted with two-piece suite comprising, vanity wash hand basin with base cupboard and close coupled WC, radiator, wall mounted gas boiler serving heating and hot water, recessed ceiling spotlights, ceramic tiled flooring.

First Floor Landing

PVCu double glazed window to side, access to insulated loft space, door to:

Main Bedroom 4.57m (15') max x 3.66m (12')

PVCu double glazed window to front, radiator.

Bedroom 2 3.62m (11'11") x 2.33m (7'8")

PVCu double glazed window to rear, radiator, TV point, coving to textured ceiling.

Family Bathroom

Fitted with three-piece suite comprising deep panelled bath with independent mains shower over and glass screen, vanity wash hand basin with cupboards under and mixer tap, shaver point, close coupled WC, part ceramic tiled walls, heated towel rail, extractor fan, radiator, wall mounted mirror, PVCu double glazed window to rear, ceramic tiled flooring.

Outside

The front of the property has hedging and is mainly laid to lawn. A hand gate leads into the enclosed rear garden, which is mainly laid to lawn and outdoor patio area. A hand gate allows access to the rear private parking area on Princes Street.

Agents Note

An immaculate and fully operational Indesit oven & grill is available for sale at an extra cost of £80.00.

Directions

Leave our Church Street office and turn right at the traffic lights onto High Street, continue along onto Fleet Street, then finally onto Fleet Road. Take the right turn just past Fleet Road garage onto Branches Lane where the property can be located on the right-hand side. For satellite navigation the property postcode is: PE12 7BE.

Council Tax

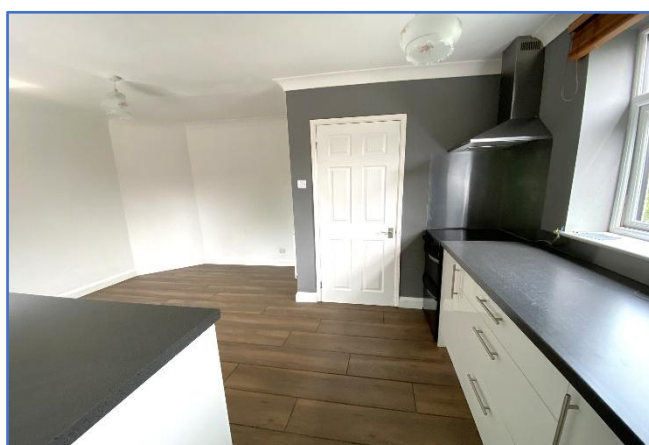
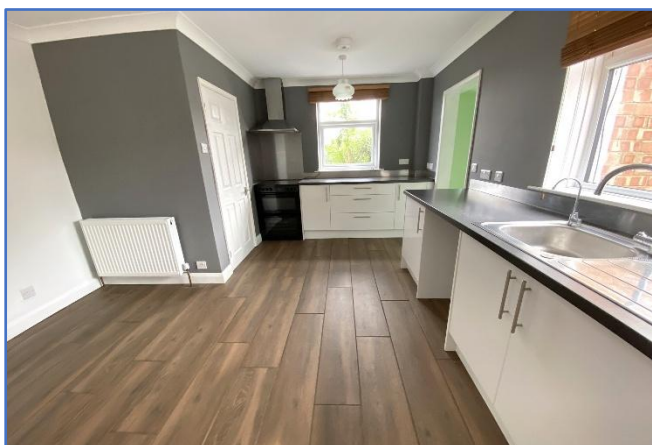
Band A ~ £ 1,496.77 from April 2025 to March 2026, South Holland District Council.

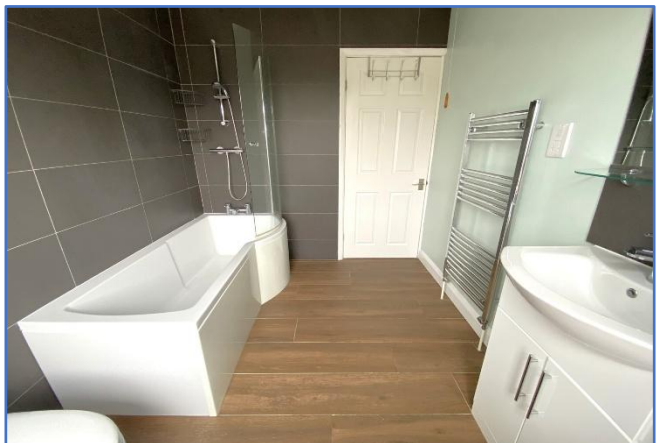
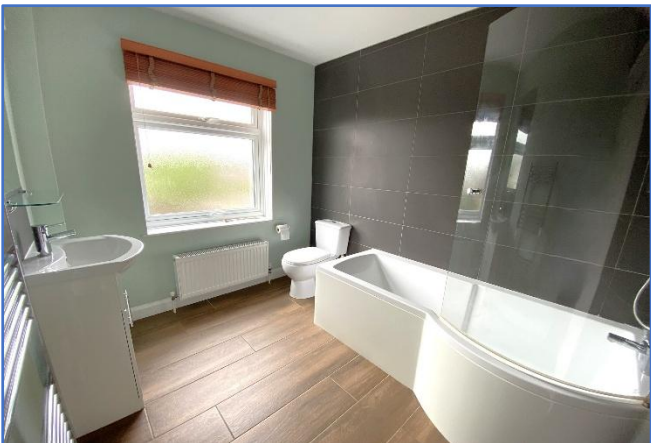
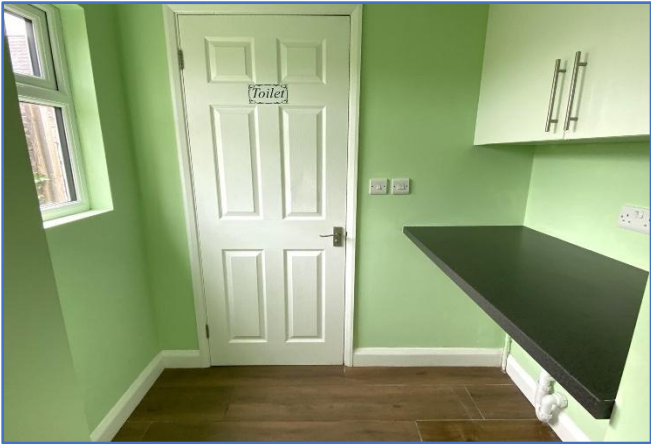
EPC ~ E

Items shown in photographs are NOT included unless specifically mentioned within the property particulars. They may however be available by separate negotiation.

Interested parties must check the availability of any property and make an appointment to view before embarking on any journey to see a property.

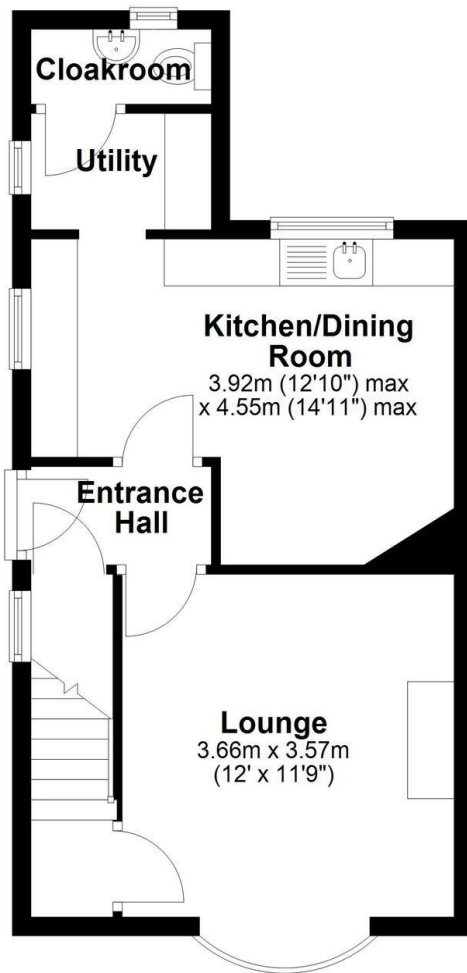
You may download, store and use the material for your own personal use and research. You may not republish, retransmit, redistribute or otherwise make the material available to any party or make the same available on any website, online service or bulletin board of your own or of any other party or make the same available in hard copy or in any other media without the website owner's express prior written consent. The website owner's copyright must remain on all reproductions of material taken from this brochure or website.





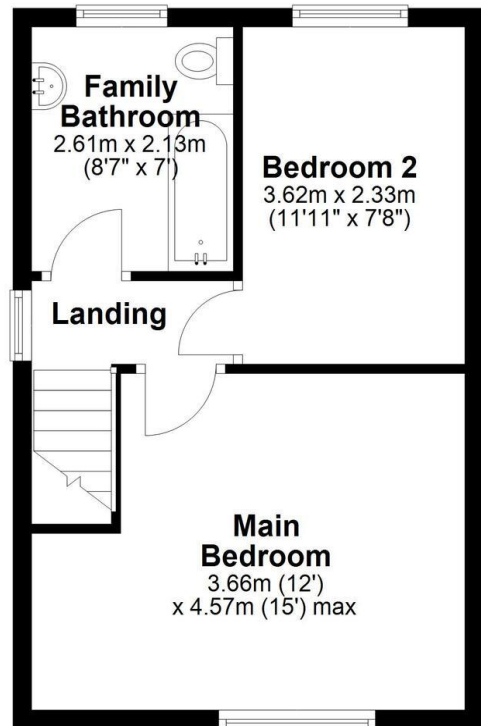
Ground Floor

Approx. 39.6 sq. metres (425.8 sq. feet)



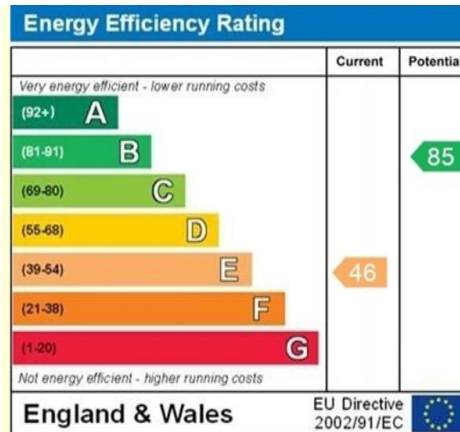
First Floor

Approx. 33.5 sq. metres (360.4 sq. feet)



Total area: approx. 73.0 sq. metres (786.2 sq. feet)





Disclaimer

VIEWINGS: Strictly by appointment with the agent on: (01406 424441) Available 7 days a week. CALL US ANYTIME!

RIGHTMOVE - ON THE MARKET - ALL MAJOR WEBSITE COVERAGE.

ONE STOP PROPERTY SHOP, FULL COLOUR BROCHURE, FREE FLOOR PLANS, MONTHLY UPDATE CALLS, ENERGY PERFORMANCE CERTIFICATES, FULL RENTAL SERVICES, TENANT FIND ONLY & MANAGEMENT, SOLICITORS, SURVEYORS, REMOVALS.

“We strive for results, it’s what we do best” 30 YEARS + IN THE INDUSTRY

HELP TO BUY, 95% MORTGAGES - WHOLE OF MARKET MORTGAGE SERVICES

DOES YOUR AGENT PROVIDE A FLOOR PLAN FREE OF CHARGE? WE DO! CALL US NOW TO SEE HOW WE CAN HELP SELL YOUR HOME.....

Items shown in photographs are NOT included unless specifically mentioned within the property particulars. They may however be available by separate negotiation.

Interested parties must check the availability of any property and make an appointment to view before embarking on any journey to see a property.

You may download, store and use the material for your own personal use and research. You may not republish, retransmit, redistribute or otherwise make the material available to any party or make the same available on any website, online service or bulletin board of your own or of any other party or make the same available in hard copy or in any other media without the website owner's express prior written consent. The website owner's copyright must remain on all reproductions of material taken from this brochure or website.

Letsgetyoumoving Estate Agents

Let our family move yours...

FREE VALUATIONS | 7 DAYS A WEEK