



HILL CLEMENTS
SALES AND LETTINGS

PRICE GUIDE

£995,000

59, Portsmouth Road

Guildford, GU2 4BS

In the heart of the town, only a few minutes walk from the station, the High Street and many popular schools - a detached character house, dating back to 1850 and on the market for the first time since 1970

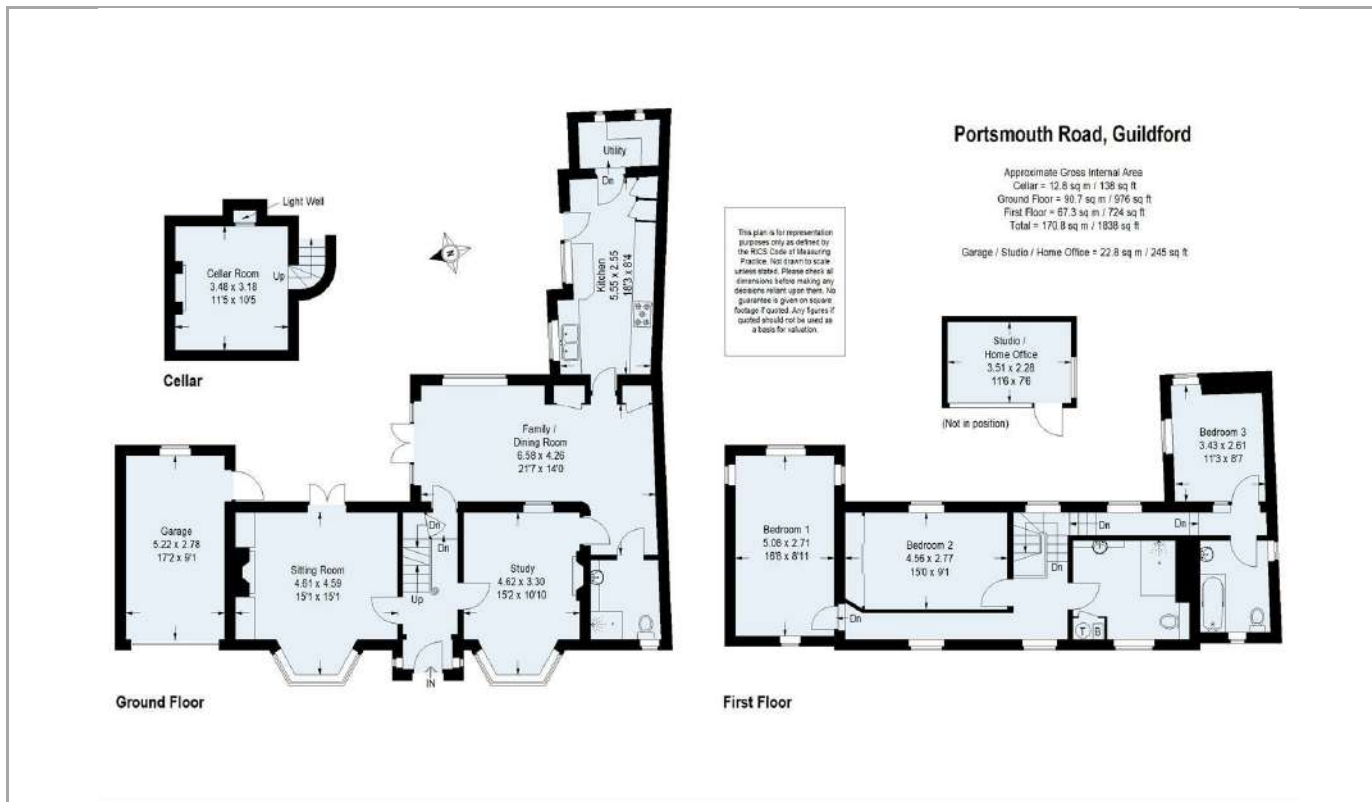
PROPERTY SUMMARY

59 Portsmouth Road is an attractive detached house of character, which dates back to 1850, and is now on the market for the first time since 1970. It has a classical symmetrical layout with a central hallway with fine Georgian staircase and two bay fronted reception rooms either side and a third at the rear. There is a long kitchen and utility, a ground floor shower room and a cellar. The first floor comprises three double bedrooms and two bathrooms. Outside there is a large courtyard parking area and a garage and there is a secluded rear garden with studio. The town centre location provides access to all of the town's amenities on foot, including the main line station, which is only 0.3 mile. The High Street with its excellent shops, restaurants and bars is equally accessible, as are many of the town's excellent schools.

-  3
-  3
-  3

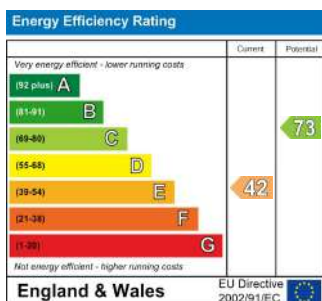






DIRECTIONS

From Guildford's one way system, take the A3100 Portsmouth Road, passing the first turning on the left to Bury Street and the access to Condor Court, and 59 is then on the left, opposite the turning to Mount Pleasant



TENURE
Freehold

VIEWINGS
By prior appointment only

LOCAL AUTHORITY
Guildford

COUNCIL TAX BAND
G

Agents Note: Whilst every care has been taken to prepare these particulars, they are for guidance purposes only. All measurements are approximate and are for general guidance purposes only and whilst every care has been taken to ensure their accuracy, they should not be relied upon and potential buyers/tenants are advised to recheck the measurements



OFFICE ADDRESS
6 Quarry Street
Guildford
Surrey
GU1 3UR

OFFICE DETAILS
01483 300300
info@hillclements.com
<https://hillclements.com/>