



HILL CLEMENTS
SALES AND LETTINGS

£1,350,000

Mountside
Guildford, GU2 4JD

This striking five bedroom detached 1920s family home occupies a prominent elevated position, overlooking Guildford town centre and beyond to the surrounding countryside. Mountside is a quiet no-through road, an extremely popular location because of its proximity to the town centre, mainline station and superb local schools, Guildford County School in particular. The High Street is only half a mile's walk, with its excellent array of shops, cafes, bars and restaurants.

PROPERTY SUMMARY

The accommodation of this attractive period property is extremely well-proportioned, with spacious rooms laid out over three floors. On the ground floor there are two separate reception areas with a kitchen/breakfast room to the rear. On the first floor there are three large bedrooms and a family bathroom, with a further two bedrooms on the top floor, one with an en-suite. Outside there is a good size garden with space to both the rear and side of the property, A single garage is provides parking for one car.



5



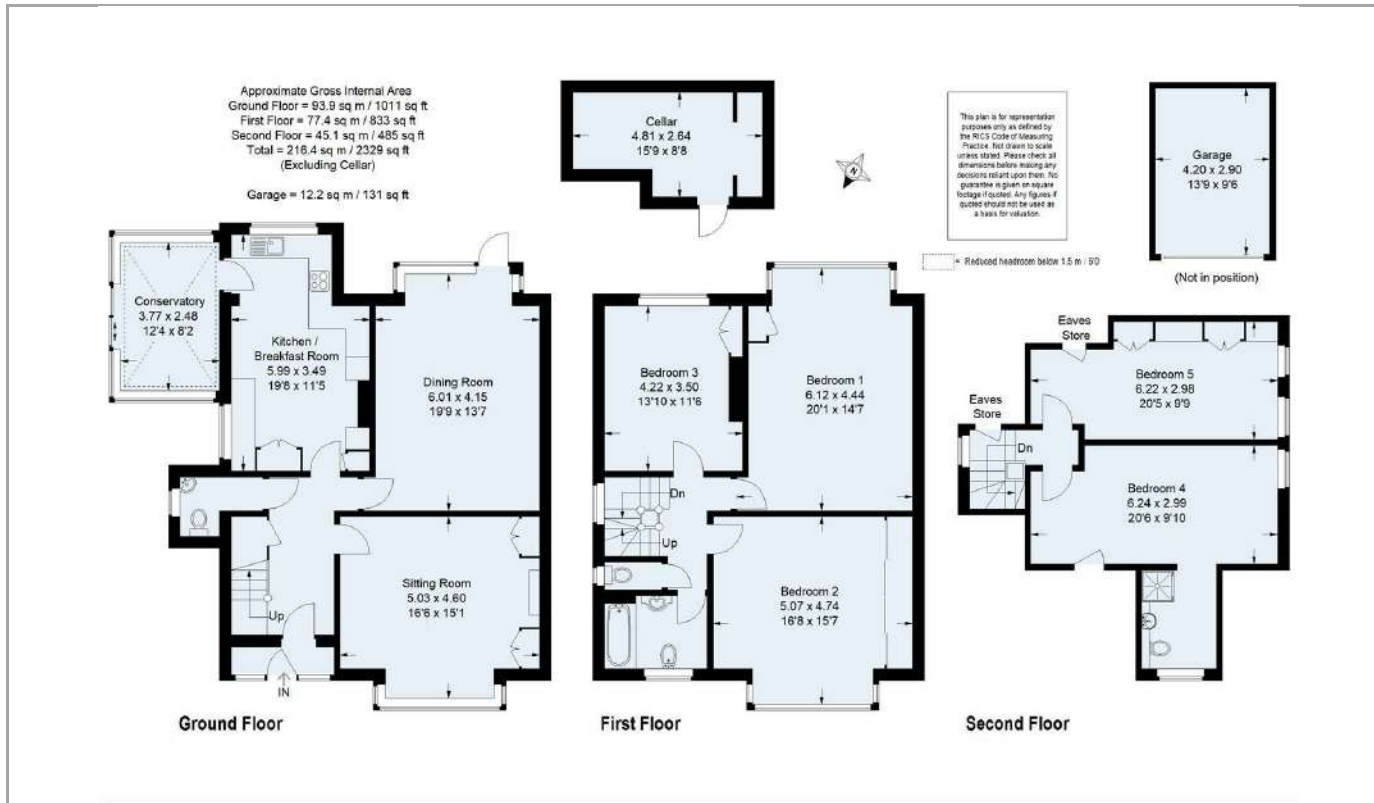
2



2

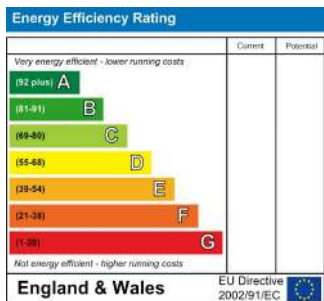






DIRECTIONS

From the one-way system at the lower end of Guildford, take the A3100 Godalming road and turn first right at the bottom of the hill into The Mount. Proceed up the hill and turn first right into Wodeland Avenue and first left into Mareschal Road. After about 150 yards, continue into Mountside and No. 11 is the fifth property on the left.



TENURE
Freehold

VIEWINGS
By prior appointment only

LOCAL AUTHORITY
Guildford Borough Council

COUNCIL TAX BAND
G

Agents Note: Whilst every care has been taken to prepare these particulars, they are for guidance purposes only. All measurements are approximate and are for general guidance purposes only and whilst every care has been taken to ensure their accuracy, they should not be relied upon and potential buyers/tenants are advised to recheck the measurements



OFFICE ADDRESS
6 Quarry Street
Guildford
Surrey
GU1 3UR

OFFICE DETAILS
01483 300300
info@hillclements.com
<https://hillclements.com/>