



**HILL CLEMENTS**  
SALES AND LETTINGS

PRICE GUIDE

**£995,000**

**2 Willow Point, Hitherbury Close**  
Guildford, GU2 4DS

## PROPERTY SUMMARY

A stunning contemporary first floor apartment, with wrap around easterly balcony with views over the water meadows to Warwicks Bench, and an amazing large south facing sun terrace, in a very convenient location only a short walk from the High Street and main line station.

Willow Point is situated at the bottom of Hitherbury Close and has glorious easterly views over the water meadows and is adjacent to a footpath leading down to the River Wey towpath. Flower Walk, opposite, provides a quiet walk to the theatre and the High Street in ten minutes. The main line station is similarly accessible on foot and provides a fast commuter service to Waterloo in 38 minutes and less. All the excellent shops, restaurants and bars of the town are also easily accessed on foot, making this location an ideal lifestyle choice.



2



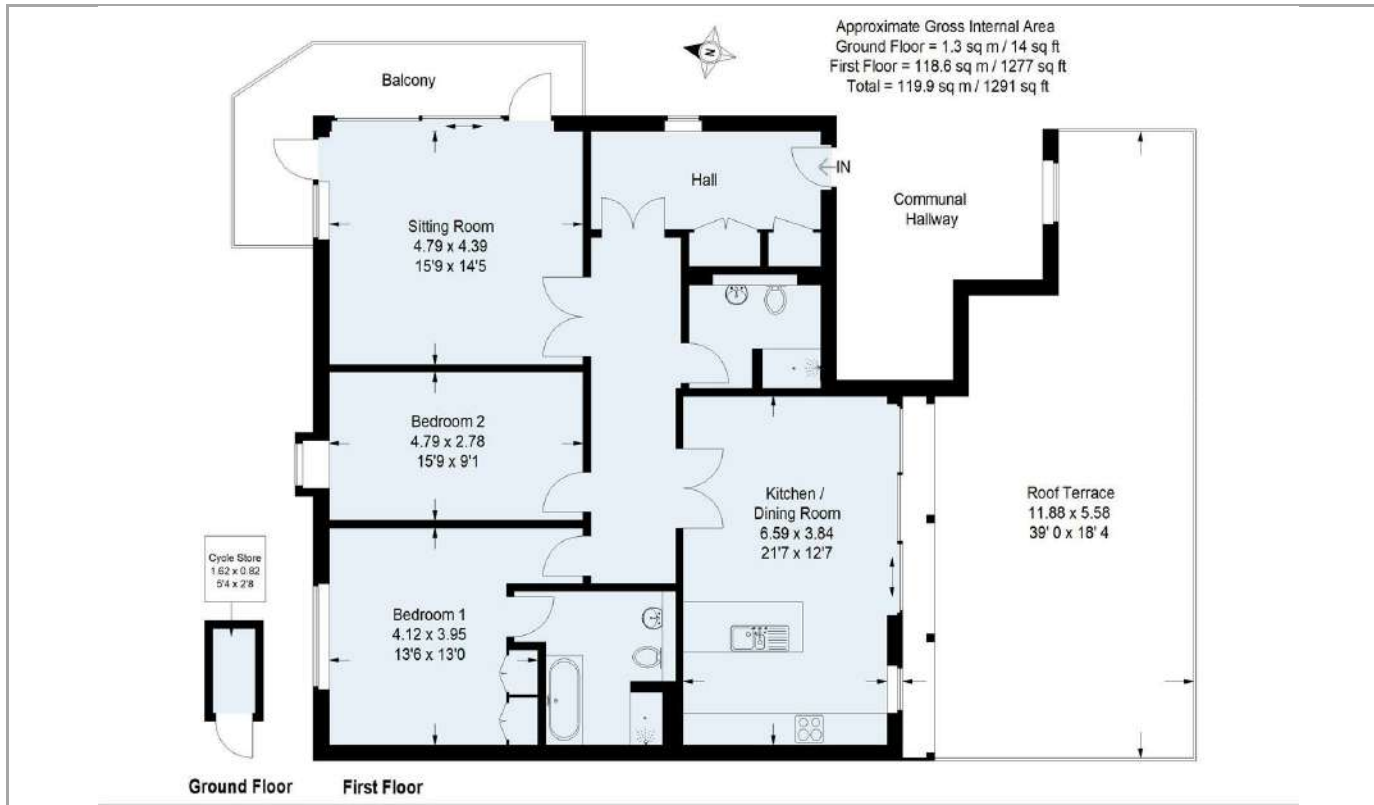
2



1

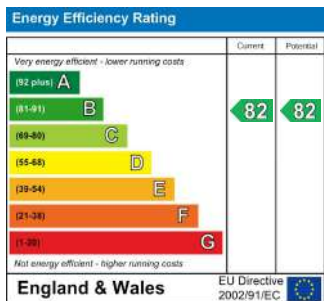






### DIRECTIONS

From Guildford's one way system, take the A3100 Portsmouth Road signed to Godalming. Proceed up the hill passing the turning to Lawn Road on the left and Rookwood Court on the right, and turn left into Hitherbury Close, after Devon Bank. Willow Point is then the second building on the right.



**TENURE**  
Leasehold - Share of Freehold

**LOCAL AUTHORITY**  
Guildford

**VIEWINGS**  
By prior appointment only

**COUNCIL TAX BAND**  
E

Agents Note: Whilst every care has been taken to prepare these particulars, they are for guidance purposes only. All measurements are approximate and are for general guidance purposes only and whilst every care has been taken to ensure their accuracy, they should not be relied upon and potential buyers/tenants are advised to recheck the measurements



**OFFICE ADDRESS**  
6 Quarry Street  
Guildford  
Surrey  
GU1 3UR

**OFFICE DETAILS**  
01483 300300  
info@hillclements.com  
https://hillclements.com/