



## **Glass House, Mill Hill, North West Industrial Estate, Peterlee, SR8 2HR**

- **Highly prominent factory/warehouse unit**
- **2 MVA power available**
- **Modern two-storey offices**
- **Excellent access to A19**

**Get more information**

<https://www.avisonyoung.co.uk>

**Avison Young**

Fourth Floor  
Central Square  
Forth Street  
Newcastle Upon Tyne  
NE1 3PJ

## Warehouse/Factory unit for lease

### Property Description

The property comprises a detached manufacturing facility with two-storey office accommodation. There are 4 bays of steel portal frame construction, with brick and block elevations. Above the brickwork, the unit is clad with insulated profile sheeting to the walls and roof.

The warehouse incorporates solid concrete floors and painted block work elevations. Goods access is via two level loading doors, one to the north elevation and one to the south elevation.

The premises were completely overhauled and refurbished in 2016.

The office accommodation has been fitted out to a high specification with a glass internal staircase to first floor. The offices benefit from a reception area, canteen and WC facilities. The main office provides an open plan area and glazed internal meeting rooms benefiting from raised access floors, LED lighting, plastered and painted walls, wall mounted radiators, and suspended ceilings.

Externally there is a concrete yard area and car parking to the south of the premises.

### Location

Peterlee is situated in a strategic location midway between Newcastle upon Tyne and Teesside on the A19 dual carriageway trunk road, which links to the A1(M) and national motorway network.

North West Industrial Estate is a well-established location and has direct access onto the A19 with local occupiers including Caterpillar, NSK, Sotech Optima in close proximity.

The property is located on the corner of Mill Hill and Davy Drive, to the north of the main Caterpillar factory.

## Glass House, Mill Hill, North West Industrial Estate, Peterlee, SR8 2HR

### Specification

- Refurbished in 2016
- Two level loading doors
- LED lighting & gas blower heating
- Extensive power supply
- 7.6m clear height to eaves
- Two-storey office accommodation
- 60 car parking spaces
- Immediate access to A19

### Accommodation

The property has been measured in accordance with the RICS Code of Measuring Practice (6th Edition):

Area (GIA)	Sq ft	Sq m
Warehouse/Factory	48,438	4,500
Ground Floor Office/Amenities	4,982	463
First Floor Office	3,171	295
<b>Total</b>	<b>56,591</b>	<b>5,258</b>

### EPC

The property has an EPC rating of C51

### Rates

The rateable value of the premises is £151,000.

### Tenure

The premises are available by way of a new full repairing and insuring lease for a term of years to be agreed.

### Rent

£283,000 per annum

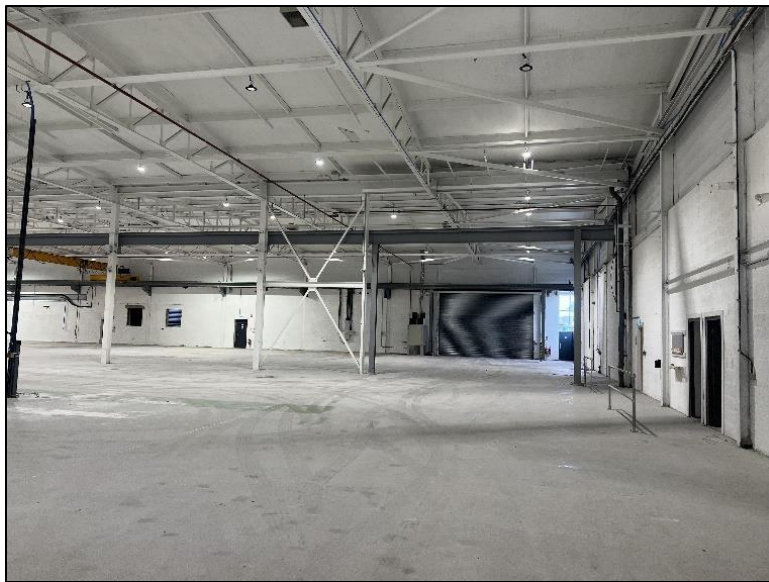
### Legal Costs

Each party is to be responsible for their own legal costs.

### VAT

VAT if applicable will be charged at the standard rate.

## Warehouse/Factory unit for lease



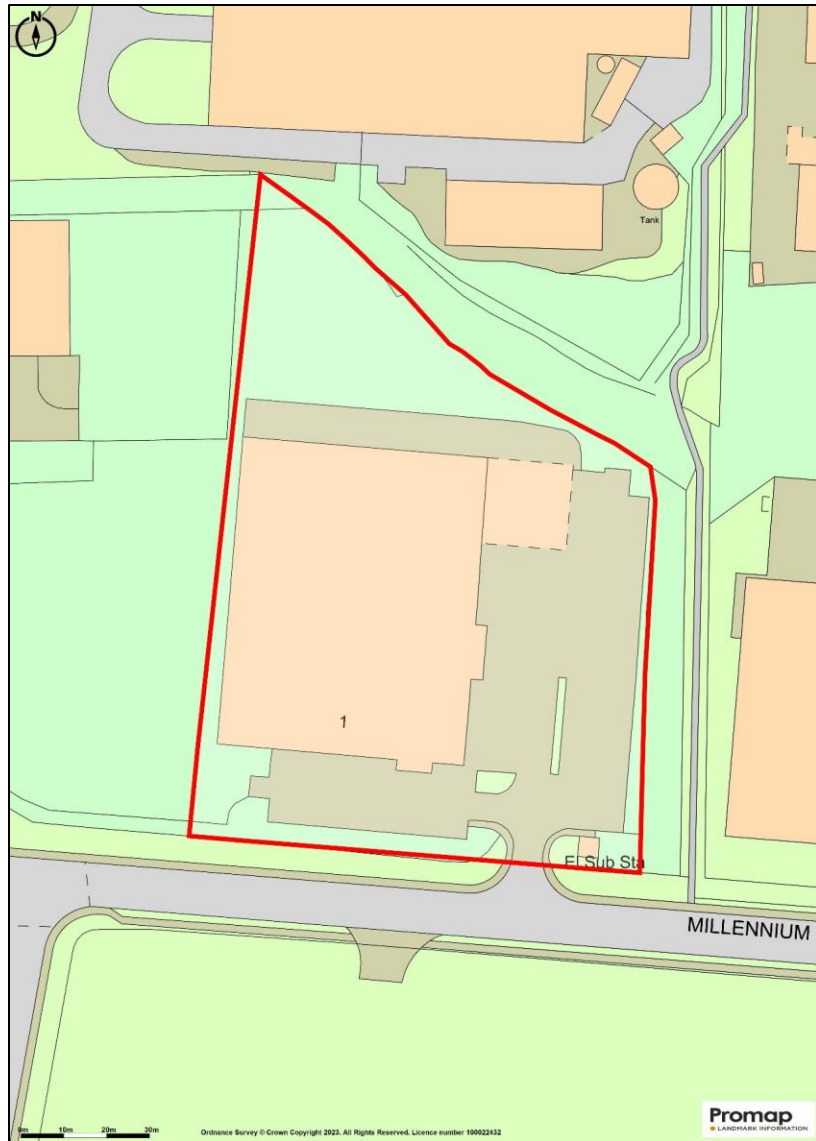
## Glass House, Mill Hill, North West Industrial Estate, Peterlee, SR8 2HR



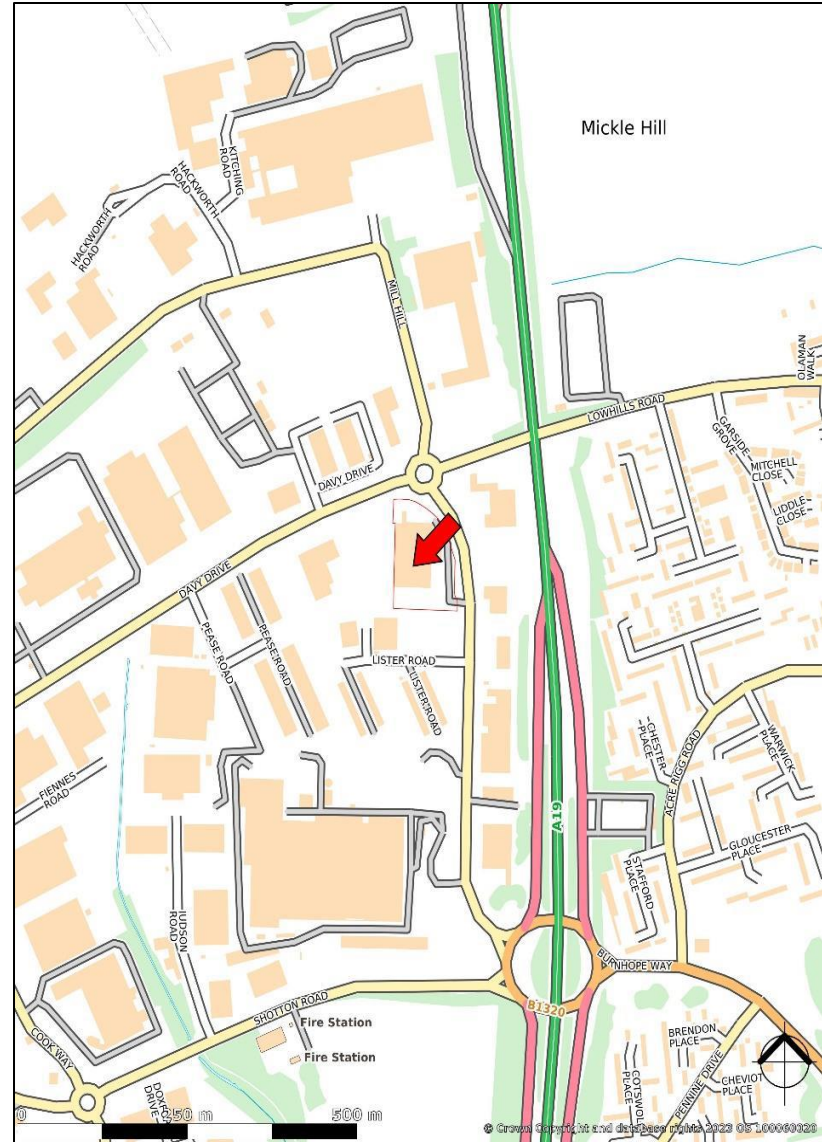
Information contained herein was obtained from sources deemed reliable and, while thought to be correct, have not been verified. Office Name Test does not guarantee the accuracy or completeness of the information presented, nor assumes any responsibility or liability for any errors or omissions therein.

**AVISON  
YOUNG**

## Warehouse/Factory unit for lease



## Glass House, Mill Hill, North West Industrial Estate, Peterlee, SR8 2HR



Information contained herein was obtained from sources deemed reliable and, while thought to be correct, have not been verified. Office Name Test does not guarantee the accuracy or completeness of the information presented, nor assumes any responsibility or liability for any errors or omissions therein.

# Get more information

## **Danny Cramman**

Director

+44 (0)191 269 0068

+44 (0)7796 993750

[Danny.cramman@avisonyoung.com](mailto:Danny.cramman@avisonyoung.com)

## **Adam Lawson**

Surveyor

+44 (0)191 261 2361

+44 (0)7825 113 277

[Adam.lawson@avisonyoung.com](mailto:Adam.lawson@avisonyoung.com)

Avison Young hereby gives notice that the information provided either for itself, for any joint agents or for the vendors lessors of this property whose agent Avison Young is in this brochure is provided on the following conditions:

1. The particulars are set out as a general outline only, for the guidance of intending purchasers and/or lessees and do not constitute an offer or contract, or part of an offer or contract.
2. All descriptions, dimensions and references to this property's condition and any necessary permission for use and occupation, and any other relevant details, are given in good faith and are believed to be correct. However, any intending purchasers or tenants should not rely on them as statements or representations of fact but satisfy themselves of their correctness by inspection or otherwise.
3. No person in the employment of Avison Young, or any joint agents, has any authority to make or give any representation or warranty whatsoever in relation to the property or properties in this brochure.
4. All prices quoted are exclusive of VAT.
5. Avison Young shall have no liability whatsoever in relation to any documents contained within the brochure or any elements of the brochure which were prepared solely by third parties, and not by Avison Young.

Anti-Money Laundering: To comply with our legal responsibilities for Anti-Money Laundering, it will be necessary for the successful bidder to provide information necessary to complete these checks before the deal is completed. Information required will include:

1. Corporate structure and ownership details.
2. Identification and verification of ultimate beneficial owners.
3. Satisfactory proof of the source of funds for the Buyers / funders / lessee.

[avisonyoung.com](http://avisonyoung.com)

---

**AVISON  
YOUNG**