

Road Map



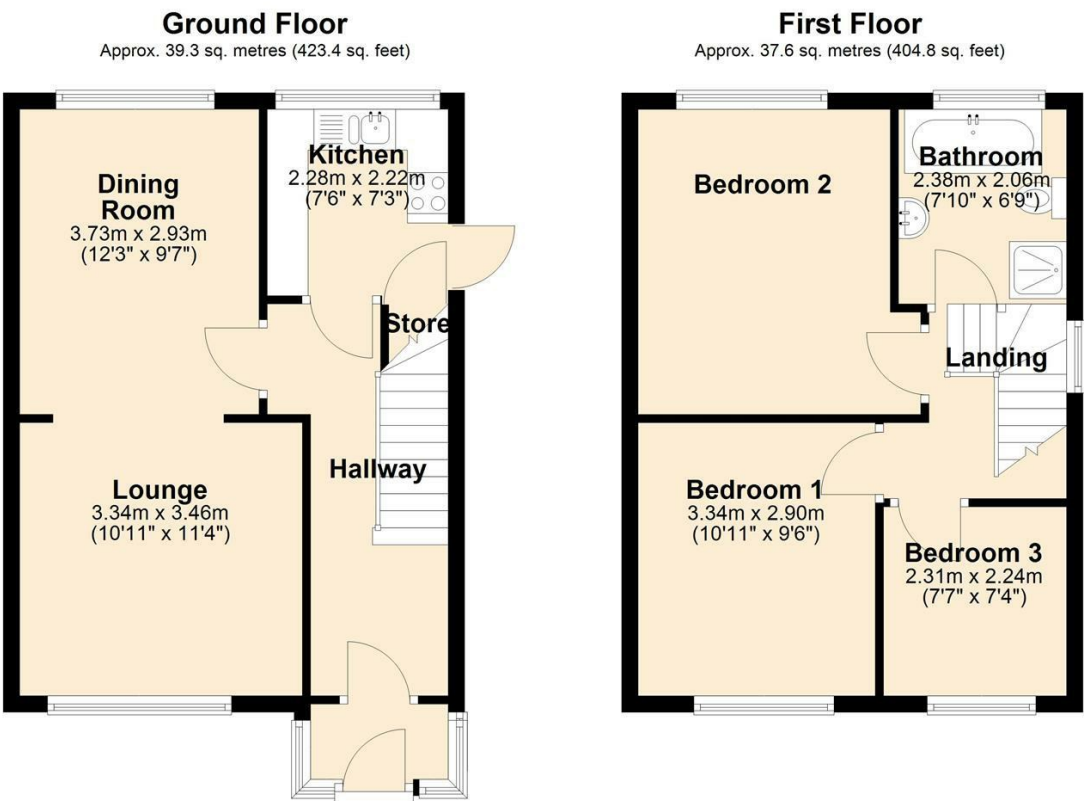
Hybrid Map



Terrain Map



Floor Plan



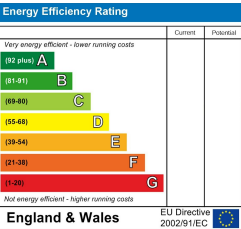
9 Moorway
, Poulton-Le-Fylde, FY6 7EX

Viewings

Please contact our iMove Sales & Lettings Office on 01253 883311 if you wish to arrange a viewing appointment for this property or require further information.

These particulars, whilst believed to be accurate are set out as a general outline only for guidance and do not constitute any part of an offer or contract. Intending purchasers should not rely on them as statements of representation of fact, but must satisfy themselves by inspection or otherwise as to their accuracy. No person in this firms employment has the authority to make or give any representation or warranty in respect of the property.

Energy Efficiency Graph



Offers In The Region Of £175,000 3 null null



Make your next move with... iMove

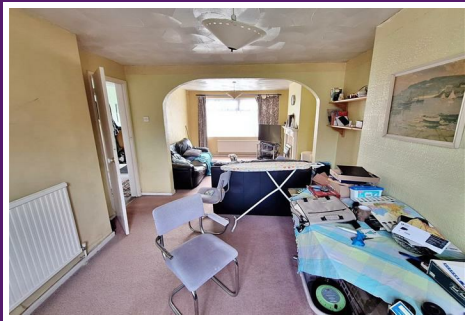
Call us now on 01253 883311
hello@imovetoday.co.uk



9 Moorway

, Poulton-Le-Fylde, FY6 7EX

Offers In The Region Of £175,000



Porch

Hallway

Lounge

11'4" x 10'11"

Dining Room

12'2" x 9'7"

Kitchen

7'5" x 7'3"

First Floor Landing

Bedroom One

10'11" x 9'6"

Bedroom Two

12'2" x 10'1"

Bedroom Three

7'6" x 7'4"

Bathroom

7'9" x 6'9"

Agent's Disclaimer

These particulars, whilst believed to be accurate are set out as a general guideline and do not constitute any part of an offer or contract. Intending Purchasers should not rely on them as statements of representation of fact, but must satisfy themselves by inspection or otherwise as to their accuracy. Please note that we have not tested any apparatus, equipment, fixtures, fittings or services including gas central heating and so cannot verify they are in working order or fit for their purpose. Furthermore, Solicitors should confirm moveable items described in the sales particulars and, in fact, included in the

sale since circumstances do change during the marketing or negotiations. Although we try to ensure accuracy, if measurements are used in this listing, they may be approximate. Therefore if intending Purchasers need accurate measurements to order carpeting or to ensure existing furniture will fit, they should take such measurements themselves. Photographs are reproduced general information and it must not be inferred that any item is included for sale with the property.

