

Road Map



Hybrid Map



Terrain Map



Floor Plan



3 Anchorage Mews

, Fleetwood, FY7 6FT

£750 PCM

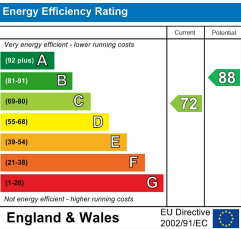


Viewings

Please contact our iMove Sales & Lettings Office on 01253 883311 if you wish to arrange a viewing appointment for this property or require further information.

These particulars, whilst believed to be accurate are set out as a general outline only for guidance and do not constitute any part of an offer or contract. Intending purchasers should not rely on them as statements of representation of fact, but must satisfy themselves by inspection or otherwise as to their accuracy. No person in this firms employment has the authority to make or give any representation or warranty in respect of the property.

Energy Efficiency Graph



Make your next move with... iMove

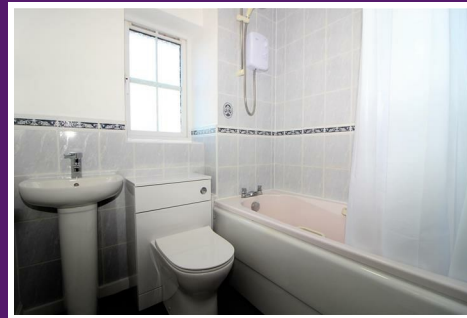
Call us now on 01253 883311
hello@imovetoday.co.uk



3 Anchorage Mews

, Fleetwood, FY7 6FT

£750 PCM



Living Room

Spacious lounge with gas fire & surround, large bay window overlooking rear garden, stairs leading off, carpet flooring

Kitchen

UPVC double glazed overlooking the rear garden, range of fitted wall and base units with complementary work surfaces, tiled splash backs, tiled floor, 1.5 bowl stainless steel sink and drainer unit, space for washing machine and dryer , built in oven and grill, 4 ring gas hob with extractor over, space for fridge.

Under stairs storage/ cloakroom

Bathroom

DG Opaque window to the front, 3 piece suite comprising; wash hand basin, WC and bath with overhead electric shower, part tiled walls, vinyl floor.

Bedroom 1

Double Bedroom with UPVC Window to side overlooking Wyre Estuary, carpet flooring, Wardrobe with sliding doors

Bedroom 2

UPVC double glazed window to side, carpet flooring , radiator

External

Allocated parking bay to front, paved and lawned garden to side with side gated access

Additional Information

Gas central heating throughout

iMove Lettings (Fylde) Ltd are members of The Property Ombudsman for Residential Lettings

redress scheme

Please note, a holding deposit of £50 per applicant will required to reserve the property. The terms of the holding deposit will be set out in writing before payment of this is requested.

Council Tax Band - B (Wyre Borough Council)
Energy Rating - C

