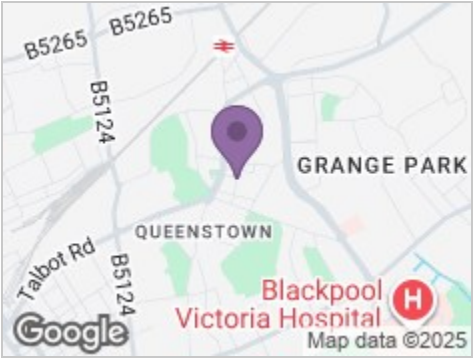


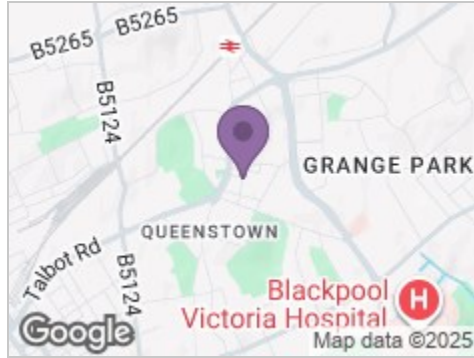
Road Map



Hybrid Map



Terrain Map



Floor Plan



20 Wilford Street

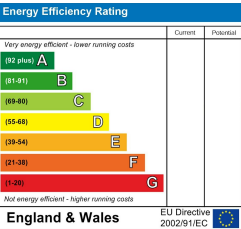
, Blackpool, FY3 7BX

Viewings

Please contact our iMove Sales & Lettings Office on 01253 883311 if you wish to arrange a viewing appointment for this property or require further information.

These particulars, whilst believed to be accurate are set out as a general outline only for guidance and do not constitute any part of an offer or contract. Intending purchasers should not rely on them as statements of representation of fact, but must satisfy themselves by inspection or otherwise as to their accuracy. No person in this firms employment has the authority to make or give any representation or warranty in respect of the property.

Energy Efficiency Graph



£750 Per Calendar Month



Make your next move with... iMove

Call us now on 01253 883311  
hello@imovetoday.co.uk

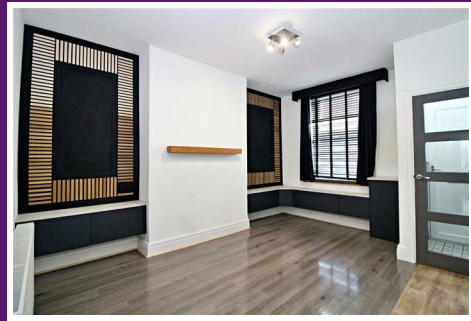




# 20 Wilford Street

, Blackpool, FY3 7BX

£750 Per Calendar Month



Porch

living room

kitchen

bedroom `1

bedroom 2

Shower Room

External

## Other infromation

Council Tax Band - A - Blackpool Council

EPC Rating D

Gas Central Heating

Double Glazed

iMove Lettings (Fylde) Ltd are members of The

Property Ombudsman for Residential Lettings

redress scheme

Please note, a holding deposit of £50 per applicant will required to reserve the property. The terms of the holding deposit will be set out before payment of this is requested.

