



Aspen Cottage, Plot 3, 18 Cow Lane

Tealby, Market Rasen, LN8 3YB

£355,000

An exclusive scheme of six, semi-detached, three bedroom cottages in the beautiful and historic village of Tealby. Aspen Cottage has internal accommodation to comprise of Entrance Hall, Lounge, WC, Utility Cupboard, Kitchen Diner and First Floor Landing leading to three Bedrooms, En-suite to Bedroom 1 and a Family Bathroom. For more information please call Mundys on 01673 847487.





COUNCIL TAX BAND – to follow

LOCAL AUTHORITY - West Lindsey District Council

TENURE - Freehold.

VIEWINGS - By prior appointment through Mundys.

LOCATION

Tealby is a village and civil parish in the West Lindsey district of Lincolnshire situated on the edge of the Lincolnshire Wolds and 3 miles north-east from Market Rasen. The village has a public house, tennis and bowls club, a school, village shop, a tea room and offers many pleasant walks in the surrounding countryside.

STANDARD SPECIFICATION

KITCHEN

Handmade bespoke kitchen by local cabinet maker Peter Jackson.

Quartz counter tops.

Stainless steel double oven.

Induction hob.

Stainless steel integrated Microwave.

Flush ceiling mounted extractor fan.

Integrated fridge and freezer.

Undercounter ceramic sink with high quality taps.

Integrated wine cooler.

4000mm wide Anthracite aluminium Bi-fold doors



FLOORING

High Quality Karndean Flooring to ground floor.
Carpet in a choice of colours to upstairs rooms.

BATHROOMS

High quality white sanitary ware with chrome fittings.
Superb ceramic tiling to bathrooms.
Currently prospective purchasers can choose between contemporary fitted units or freestanding Heritage sanitary ware to bathroom and en-suite.
Chrome ladder towel rail.
Ground Floor Cloakroom with quality white sanitary ware and chrome mixer taps.

HEATING

Traditional Gas central heating with A rated condensing boiler.
Underfloor heating to the ground floor.
Radiators to first floor.

SAFETY/SECURITY

Mains operate smoke/heat detectors.

ADDITIONAL

TV and Telephone points to living areas and TV points in all Bedrooms.
High quality contemporary KLIK sockets and switches.
A combination of white painted solid and glazed wooden doors with high quality chrome door furniture.
Electric extractor fans to kitchen, bathroom, shower room and cloakroom.

ACCOMMODATION

ENTRANCE HALL

WC

LOUNGE - 13' 2" x 11' 11" (4.01m x 3.63m)

KITCHEN/DINING & LIVING AREA - 9' 2" x 14' 11" (5.84m x 4.55m)

FIRST FLOOR LANDING

BEDROOM - 14' 2" x 10' 2" (4.32m x 3.1m)

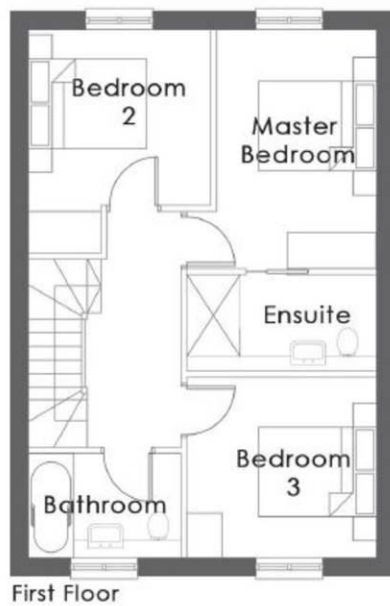
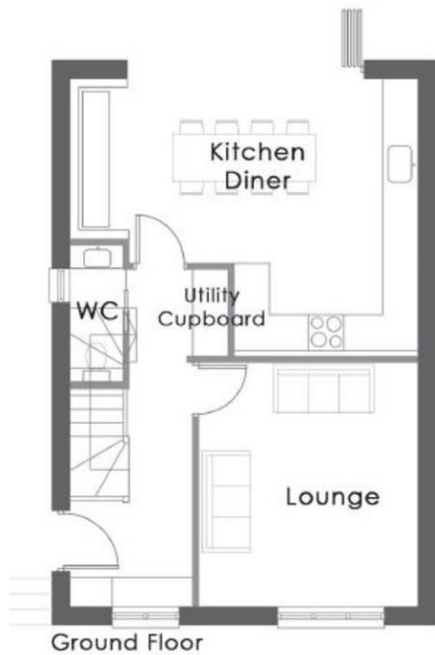
EN-SUITE - 7' 11" x 3' 11" (2.41m x 1.19m)

BEDROOM - 10' 5" x 8' 6" (3.18m x 2.59m)

BEDROOM - 10' 6" x 9' 10" (3.2m x 3m)

FAMILY BATHROOM - 8' 2" x 5' 7" (2.49m x 1.7m)

OUTSIDE - To the rear of the property there is a lawned, walled garden with a paved patio seating area. There are two parking spaces.



WEBSITE

Our detailed website shows all our available properties and also gives extensive information on all aspects of moving home, local area information and helpful information for buyers and sellers. This can be found at mundys.net

SELLING YOUR HOME – HOW TO GO ABOUT IT

We are happy to offer FREE advice on all aspects of moving home, including a Valuation by one of our QUALIFIED/SPECIALIST VALUERS. Ring or call into one of our offices or visit our website for more details.

REFERRAL FEE INFORMATION – WHO WE MAY REFER YOU TO

Sills & Betteridge, Ringrose Law LLP, Burton and Co, Bridge McFarland and Gilson Gray who will be able to provide information to you on the Conveyancing services they can offer. Should you decide to use these Conveyancing Services then we will receive a referral fee of up to £150 per sale and £150 per purchase from them.

CWH and J Walter will be able to provide information on services they offer relating to Surveys. Should you decide to instruct then we will receive a referral fee of up to £125.

Mundys Financial Services who will be able to offer a range of financial service products. Should you decide to instruct Mundys Financial Services we will receive a commission from them of £250 and in addition, the individual member of staff who generated the lead will receive £50.

BUYING YOUR HOME

An Independent Survey gives peace of mind and could save you a great deal of money. For details, including RICS Home Buyer Reports, call 01522 556088 and ask for Steven Spivey MRICS.

GETTING A MORTGAGE

We would be happy to put you in touch with our Financial Adviser who can help you to work out the cost of financing your purchase.

NOTE

1. None of the services or equipment have been checked or tested.
2. All measurements are believed to be accurate but are given as a general guide and should be thoroughly checked.

GENERAL

If you have any queries with regard to a purchase, please ask and we will be happy to assist. Mundys makes every effort to ensure these details are accurate, however they are for themselves and the vendors (Lessors) for whom they act as Agents give notice that:

1. The details are a general outline for guidance only and do not constitute any part of an offer or contract. No person in the employment of Mundys has any authority to make or give representation or warranty whatever in relation to this property.
2. All descriptions, dimensions, references to condition and necessary permissions for use and occupation and other details should be verified by your self on inspection, your own advisor or conveyancer, particularly on items stated herein as not verified.

Regulated by RICS. Mundys is the trading name of Mundys Property Services LLP registered in England NO. OC352705. The Partners are not Partners for the purposes of the Partnership Act 1890. Registered Office 29 Silver Street, Lincoln, LN2 1AS.



29 – 30 Silver Street
Lincoln
LN2 1AS

www.mundys.net

01673 847487

Agents Note: Whilst every care has been taken to prepare these sales particulars, they are for guidance purposes only. All measurements are approximate and are for general guidance purposes only and whilst every care has been taken to ensure their accuracy, they should not be relied upon and potential buyers are advised to recheck the measurements.

