



## Holmes Cottage, Holmes Road

Stixwoud, Woodhall Spa, LN10 5HT

**£600,000**

Holmes Cottage and Lodge – Offering the ideal country living lifestyle in the most sublime setting, tucked away at the end of a country lane situated within beautiful, mature grounds of 1.36 Acres (STS) surrounded by panoramic open field views. The property itself originally dates back to the 1840's and has, in recent years, been greatly improved, empathetically extended and thoroughly renovated by the present Vendors and now offers well planned, spacious and versatile living accommodation totalling over 2500 sqft. The welcoming Open Plan Living Dining Room has a feature fireplace with inset log burner and is a perfect room for entertaining with ample space for a large dining table, access to the Pantry, a 'Snug' Sitting Area and large double doors leading onto the large Garden Room with its own further bi-folding doors opening onto the covered external seating area. There is also the comprehensive Kitchen with a range of integral appliances and dual aspect views that flow onward into the Inner Hallway with storage closet, Rear Entrance, Utility Room, WC and integral access to the Double Garage. The property also offers three Double Bedrooms, two Luxury Bathrooms and further En-Suite Shower Room, front Entrance Porch, Entrance Hall and Inner Hallway with a useful walk-in storage area. The one double bedroomed Self Contained Lodge totalling 345 sqft offers a prime opportunity to utilise as an Annexe and/or Holiday Cottage (subject to necessary consents) and briefly comprises Entrance Hall with storage closet and opening into the Open Plan Living Dining Kitchen with double doors opening onto the covered decking area and overlooking the orchard. The double Bedrooms also has a built-in storage closet, double doors onto the covered decked area and luxury En-Suite Shower Room. Externally, the property has a large Double Garage and a further variety of useful outbuildings, storage sheds and workshops, accessed via five bar gates to the right hand side. There is also a high quality, substantial Garden Shed, Potting Shed and Summer House set within the well established and mature gardens, as well as the large covered external seating area and patio. The wraparound grounds are an ever-changing kaleidoscope of seasonal colours and extend onto the well-stocked and fruitful orchard including pears, plums, apples, grape vines and the extensive range of solar panels.





## Holmes Cottage, Holmes Road, Stixwould, Woodhall Spa, LN10 5HT



### SERVICES

Main House - Mains water and electricity. Drainage to a septic tank and oil fired central heating. There are solar panels with a feed-in tariff (Scottish Power).

Annexe/Cabin - LPG heating with a combination boiler which also provides the hot water. Drainage to its own septic tank. Mains electricity and water from the main house.

The current broadband provider is EE 4G.

**NOTE** - Holmes Road, the road approaching Holmes Cottage, has been completely resurfaced to a high standard by the Highways Authority. The short length of farm track to the cottage has also been re-laid with new stone.

**EPC RATING** - D.

**COUNCIL TAX BAND** - D (East Lindsey District Council).

**TENURE** - Freehold.

**VIEWINGS** - By prior appointment through Mundys.

### DIRECTIONS

From the centre of the village of Woodhall Spa, proceed out of the village on Stixwould Road, passing Jubilee park on the left hand side. Continue along Stixwould Road and into the village of Stixwould and where the road bears right, turn left on to Main Road, bear right on to Duckpool Lane and continue along and turn left on to Holmes Road. Proceed along Holmes Road where there is a farm style track on the left hand side, proceed down this track and the property can be located on the right hand side.







#### LOCATION

The property sits on the outskirts of the rural village of Stixwold which lies approximately 2.5 miles from the sought after village of Woodhall Spa, a major tourist attraction and holiday destination, with the much loved Jubilee Park, Kinema in the Woods, the famous 1940's weekends and the home of England Golf. Woodhall Spa also offers a wide range of local shops and facilities. Stixwold is also located approximately 7.5 miles from the nearby Market Town of Horncastle and approximately 18.5 miles from the University and Cathedral City of Lincoln.

#### PORCH

7' 10" x 4' 0" (2.39m x 1.22m) With uPVC double glazed door to front elevation, two uPVC double glazed windows to side elevation and fitted units with work surfaces over.

#### ENTRANCE HALL

8' 11" x 7' 8" (2.72m x 2.34m) With laminate flooring, radiator and access to Store Room.

#### STORE ROOM

6' 11" x 3' 0" (2.11m x 0.91m)

#### INNER HALLWAY

Giving access to the Open Plan Living Space, two Bedrooms and two Bathrooms.

#### OPEN PLAN LIVING SPACE

22' 8" x 16' 0" (6.91m x 4.88m) With solid oak wood flooring, fireplace with Clearview multi-fuel burner inset, two radiators, double doors with windows leading to the Garden Room and opening into the Sitting Area.

#### SITTING AREA

9' 0" x 7' 8" (2.74m x 2.34m) With uPVC double glazed window to front elevation, solid oak wood flooring and radiator.

#### GARDEN ROOM

22' 8" x 14' 4" (6.91m x 4.37m) With two floor to ceiling uPVC double glazed windows to side elevation, bi-folding doors opening on to the covered seating area, four Velux windows, laminate flooring and four radiators.

#### PANTRY

6' 11" x 5' 8" (2.11m x 1.73m) With uPVC double glazed window to front elevation, solid wood flooring and shelving.

#### KITCHEN

20' 1" x 9' 4" (6.12m x 2.84m) With two uPVC double glazed windows to front elevation, a further uPVC double glazed window to side elevation, vinyl flooring, fitted with a range of wall, base units and drawers with work surfaces over and tiled splash-backs, stainless steel sink unit and drainer with mixer tap, Range master oven with extractor fan over, integral microwave, plumbing and space for a washing machine and dishwasher, space for a fridge freezer, breakfast bar and radiator.

#### INNER HALLWAY

5' 0" x 3' 11" (1.52m x 1.19m) With laminate flooring and storage cupboard.





#### **SIDE ENTRANCE**

10' 2" x 5' 2" (3.1m x 1.57m) With uPVC double glazed external door to front elevation, double doors to the rear elevation, laminate flooring and radiator.

#### **UTILITY ROOM**

8' 6" x 7' 4" (2.59m x 2.24m) With uPVC double glazed windows to front and side elevations, laminate flooring, fitted with a range of wall and base units with work surfaces over, stainless steel sink and drainer with mixer tap, plumbing and space for a washing machine and tumble dryer and fire door access to the Garage.

#### **WC**

5' 11" x 3' 8" (1.8m x 1.12m) With uPVC double glazed window to rear elevation, laminate flooring, low level WC, vanity wash hand basin, heated towel rail and extractor fan.

#### **BEDROOM 1**

16' 0" x 12' 11" (4.88m x 3.94m) With uPVC double glazed window to rear elevation, solid wood flooring, fitted wardrobes and radiator.

#### **EN-SUITE**

9' 11" x 6' 4" (3.02m x 1.93m) With uPVC double glazed windows to rear and side elevations, Velux window, tiled flooring, partly tiled walls, suite to comprise of low level WC, wash hand basin and walk-in shower cubicle with tiled surround, radiator and extractor fan.

#### **BEDROOM 2**

14' 10" x 10' 1" (4.52m x 3.07m) With uPVC double glazed windows to rear and side elevations and two radiators.

#### **BEDROOM 3 / OFFICE**

12' 11" x 12' 3" (3.94m x 3.73m) With uPVC double glazed window to rear elevation and radiator.

#### **BATHROOM**

10' 6" x 7' 8" (3.2m x 2.34m) With uPVC double glazed window to side elevation, Velux window, laminate flooring, suite to comprise of low level WC, wash hand basin, walk-in shower cubicle with tiled surround and free standing bath, illuminated wall mirror, heated towel rail, radiator and extractor fan.

#### **BATHROOM**

12' 3" x 8' 5" (3.73m x 2.57m) With Velux window, tiled flooring, suite to comprise of low level WC, vanity wash hand basin and bath, fully tiled walls, heated towel rail, radiator, extractor fan and storage cupboard.

#### **ANNEXE**

#### **ENTRANCE**

5' 11" x 4' 0" (1.8m x 1.22m) With uPVC double glazed external door to front elevation, laminate flooring and access to Store Room.







## OPEN PLAN LIVING

13' 6" x 12' 3" (4.11m x 3.73m)

**LIVING AREA** - With two uPVC double glazed windows to rear elevation, double doors to front elevation and laminate flooring.

**KITCHEN AREA** - Fitted with a range of base units with work surfaces over and matching up-stands, stainless steel sink and drainer, integral oven and four ring ceramic hob with extractor fan over, integral fridge and washing machine and two radiators.

## BEDROOM

9' 8" x 9' 4" (2.95m x 2.84m) With uPVC double glazed double doors to front elevation, laminate flooring, radiator and built-in wardrobe.



## EN-SUITE

7' 4" x 3' 9" (2.24m x 1.14m) With uPVC double glazed window to rear elevation, laminate flooring, suite to comprise of low level WC, wash hand basin with tiled splash-back and walk-in shower cubicle with tiled surround, illuminated wall mirror, heated towel rail and extractor fan.

## STORE

5' 11" x 3' 0" (1.8m x 0.91m) With uPVC double glazed window to

## GARAGE

21' 6" x 15' 8" (6.55m x 4.78m) With electric door, power and lighting.



## OUTSIDE

The Annexe/Cabin is located within the woodland and a area of the mature gardens and has a private covered decked seated area and outside space. The main property sits in grounds of approximately 1.36 acres (STS) and has a driveway providing off road parking and giving access to the Garage with an area to the side with numerous outbuildings. The property features a covered seating area accessed off the Garden Room which provides an entertaining space with open countryside views and overlooking the mature rear garden. The woodland area to the side of the property also gives access to the detached Annexe/Cabin and the bank of solar panels.

### WEBSITE

Our detailed website shows all our available properties and also gives extensive information on all aspects of moving home, local area information and helpful information for buyers and sellers. This can be found at [murdys.ni](http://murdys.ni)

### SELLING YOUR HOME - HOW TO GO ABOUT IT

We are happy to offer FREE advice on all aspects of moving home, including a Valuation by one of our QUALIFIED/SPECIALIST VALUERS. Ring or call into one of our offices or visit our website for more details.

### REFERRAL FEE INFORMATION - WHO WE MAY REFER YOU TO

Sills & Betteridge, Ringrose Law LLP, Burton and Co, Bridge McFarland and Home Property Lawyers who will be able to provide information to you on the Conveyancing services they can offer. Should you decide to use these Conveyancing Services then we will receive a referral fee of up to £150 per sale and £150 per purchase from them.

CWH and J. Walter will be able to provide information and services they offer relating to Surveys. Should you decide to instruct them then we will receive a referral fee of up to £125.

Westlaby Financial Services who will be able to offer a range of financial service products. Should you decide to instruct Westlaby Financial Services we will receive 30% of the fee which Westlaby Financial Services receive from the lender or provider. The average fee we currently would receive is £542. In addition Westlaby Financial Services will pay between £30 and £300 commission to the individual member of staff who generated the appointment.

### BUYING YOUR HOME

An independent Survey gives peace of mind and could save you a great deal of money. For details, including RICS Home Buyer Reports, call 01522 556088 and ask for Steven Sneyd MRICS.

### GETTING A MORTGAGE

We would be happy to put you in touch with our Financial Adviser who can help you work out the costs of financing your purchase.

### NOTE

1. None of these services or equipment have been checked or tested.
2. All measurements are believed to be accurate but are given as a general guide and should be thoroughly checked.

### GENERAL

If you have any queries with regard to a purchase, please ask and we will be happy to assist. Murdys makes every effort to ensure these details are accurate however they themselves and the vendors (Lessor or for whom they act as Agents) give notice that:

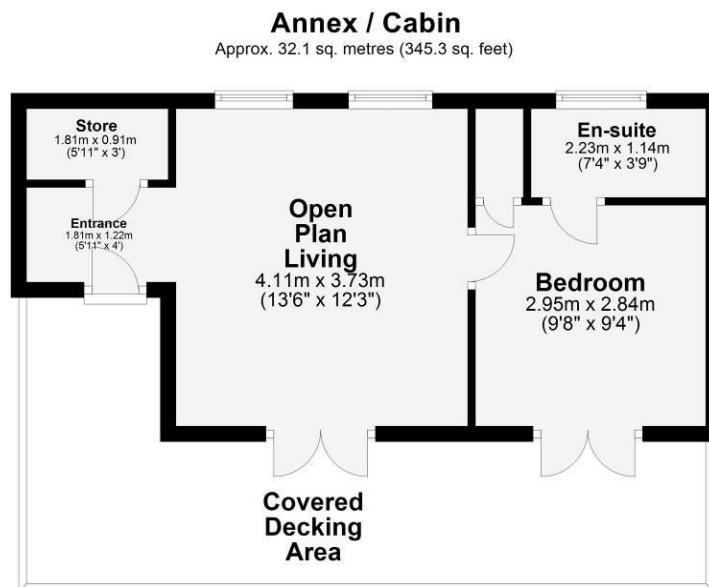
1. The details are a general outline or guide only and do not constitute any part of an offer or contract. No person in the employment of Murdys has any authority to make or give representation or warranty whatsoever in relation to this property.
2. All descriptions, dimensions, references to condition and necessary permissions for use and occupation and other details should be verified by yourself on inspection, your own advisor or conveyancer, particularly on terms stated herein and not verified.

Regulated by RICS. Murdys is the trading name of Murdys Property Services LLP registered in England NO. OC 353705. The partners are not partners for the purposes of the Partnership Act 1890. Registered Office: 29 Silver Street, Lincoln, LN2 1AS.





Total area: approx. 239.4 sq. metres (2576.9 sq. feet)  
The marketing plans shown are for guidance purposes only and are not to be relied on for scale or accuracy.  
Mundys Estate Agents  
Plan produced using PlanUp.



Total area: approx. 32.1 sq. metres (345.3 sq. feet)  
The marketing plans shown are for guidance purposes only and are not to be relied on for scale or accuracy.  
Mundys Estate Agents  
Plan produced using PlanUp.

**29 – 30 Silver Street**  
**Lincoln**  
**LN2 1AS**

**www.mundys.net**  
**residential@mundys.net**  
**01522 510044**

Agents Note: Whilst every care has been taken to prepare these sales particulars, they are for guidance purposes only. All measurements are approximate and are for general guidance purposes only and whilst every care has been taken to ensure their accuracy, they should not be relied upon and potential buyers are advised to recheck the measurements.