



89/8 HIGH STREET
TRANENT, EAST LoTHIAN, EH33 1LW

	1		1	EPC RATING	D	COUNCIL TAX BAND	B
---	----------	---	----------	---------------	----------	---------------------	----------



SUMMARY

Forming part of a traditional building on Tranent's High Street, this one-bedroom second/top-floor flat offers an ideally proportioned home for first-time buyers, professionals, couples, and rental investors alike. The flat's location allows for easy access to amenities such as shops, eateries, and other everyday essentials on the high street itself and other areas of the town, transport links connecting across the county and further afield, and open spaces, with the scenic East Lothian coast just a short drive away.

Extras: The property shall be sold as seen. Please note, some images have computer generated furniture to show possible layouts. The photos of the rooms are actual images.

FEATURES

- Second/top-floor flat in Tranent
- Part of a traditional High Street building
- Secure shared entrance and stairwell
- Entrance hallway
- Open-plan kitchen, living, and dining room, with a modern kitchen design
- South-facing double bedroom
- Three-piece shower room
- On-street parking nearby
- Electric heating
- Double-glazed windows





**OFFERS TO:
22 Hardgate
Haddington
EH41 3JS**

**Tel: 01620 825 368
Fax: 01620 824 671**

DX540733 Haddington



HOUSE SALES

If you have a house to sell, we provide free pre-sales advice, including valuation. We will visit your home and discuss in detail all aspects of selling and buying, including costs and marketing strategy, and will explain GSB Properties' comprehensive services.

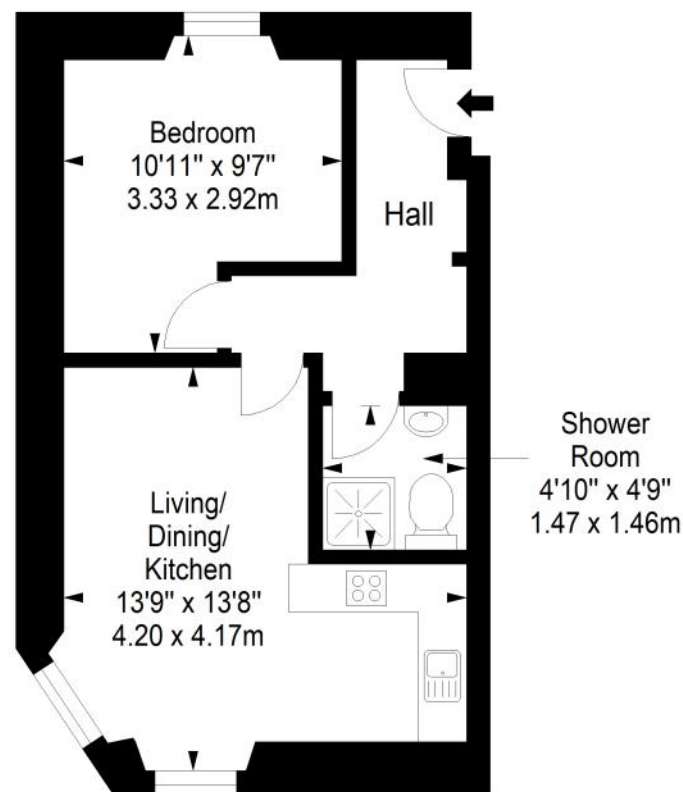
1. While these Sales Particulars are believed to be correct, their accuracy is not warranted and they do not form any part of any contract. All sizes are approximate.
2. Interested parties are advised to note interest through their solicitor as soon as possible in order to be kept informed should a Closing Date be set. The seller will not be bound to accept the highest or any offer.

FLOORPLAN



Second Floor

Approx. 30.1 sq. metres (324.0 sq. feet)



Total area: approx. 30.1 sq. metres (324.0 sq. feet)