



GARDEN STIRLING BURNET

18 LAKESIDE, THE GLEN
THURSTON MANOR, EAST LOTHIAN, EH42 1SA



2



2

EPC
RATING

NA

COUNCIL
TAX BAND

TBC



SUMMARY

Beautifully presented with attractive, contemporary interiors, this luxury lodge is situated in the exclusive Glen area of Thurston Manor, a sought-after holiday park on the beautiful East Lothian coast. The two-bedroom, two-bathroom lodge will appeal to those looking for a holiday home in an area of outstanding natural beauty, with wonderful open countryside and the coast on the doorstep, as well as excellent amenities close by.

Thurston Manor itself is also home to excellent facilities, including a shop, leisure club with a gym and pool, a bar and restaurant, and a play park.

Extras: All fitted floor coverings, window coverings, light fittings, and integrated kitchen appliances will be included in the sale.

FEATURES

- Luxury holiday lodge in The Glen at Thurston Manor
- Well-presented, contemporary interiors
- Fabulous open-plan kitchen, living and dining room
- Two double bedrooms with built-in wardrobes
- En-suite bathroom with shower-over-bath, twin sinks, a WC, a towel radiator, and a wealth of vanity storage
- En-suite shower room with storage and a towel radiator
- Large deck tranquilly overlooking the lake
- Private parking for multiple vehicles
- Gas central heating and double glazing





OFFERS TO:
22 Hardgate
Haddington
EH41 3JS

Tel: 01620 825 368
Fax: 01620 824 671

DX540733 Haddington



HOUSE SALES

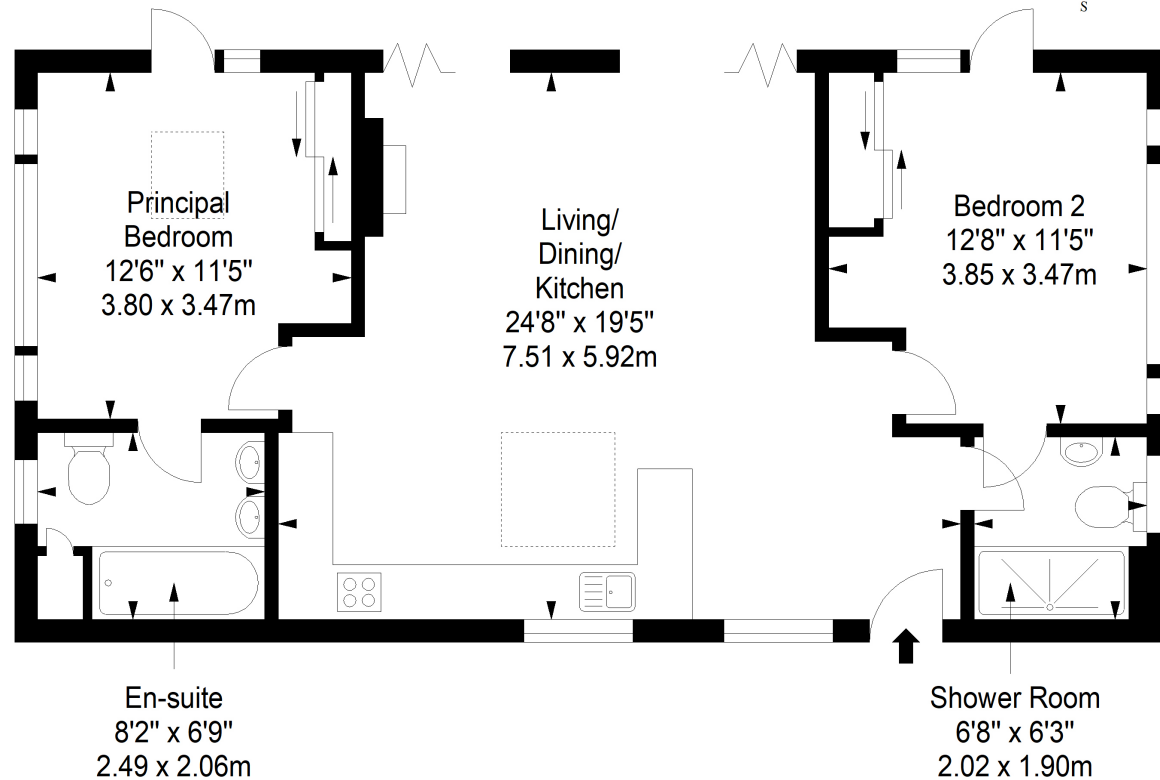
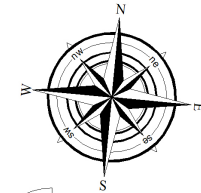
If you have a house to sell, we provide free pre-sales advice, including valuation. We will visit your home and discuss in detail all aspects of selling and buying, including costs and marketing strategy, and will explain GSB Properties' comprehensive services.

1. While these Sales Particulars are believed to be correct, their accuracy is not warranted and they do not form any part of any contract. All sizes are approximate.
2. Interested parties are advised to note interest through their solicitor as soon as possible in order to be kept informed should a Closing Date be set. The seller will not be bound to accept the highest or any offer.

FLOORPLAN

Ground Floor

Approx. 73.2 sq. metres (787.9 sq. feet)



Total area: approx. 73.2 sq. metres (787.9 sq. feet)