

Yorkshire Residential Sales and Lettings

Hub 26 | Hunsworth Lane | Cleckheaton | BD19 4LN

T. 01274 606 167 E. enquiries@yorkshire-residential.co.uk

www.yorkshire-residential.co.uk



**YORKSHIRE
RESIDENTIAL**

Sales and Lettings



9 Elme Mill, Hebden Bridge, HX7 6EB

£1,095



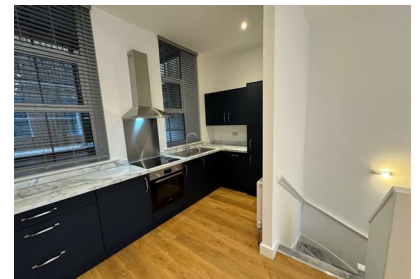
*** 2 BEDROOM APARTMENT***GROUND FLOOR***HEBDEN BRIDGE CENTRE***

Newly built in 2024 is this 2 bedroom apartment which is positioned in the heart of Hebden town centre. Accommodation which comprises of; ground floor - entrance hallway, bathroom and 2 bedrooms. The first floor has an open plan living kitchen dining area. This property has never been lived so you would benefit from everything being brand new including fitted appliances.

There is an enclosed communal garden area.

****Contact YORKSHIRE RESIDENTIAL 01274 606167 to arrange a viewing****

- 2 Bedroom Apartment
- Brand New in 2024
- UPVC Double Glazed
- Ground Floor
- Gas Central Heated
- Hebden Bridge Town Centre



Hub 26 Hunsworth Lane | Cleckheaton | BD19 4LN

T. 01924 501333 E. enquiries@yorkshire-residential.co.uk www.yorkshire-residential.co.uk