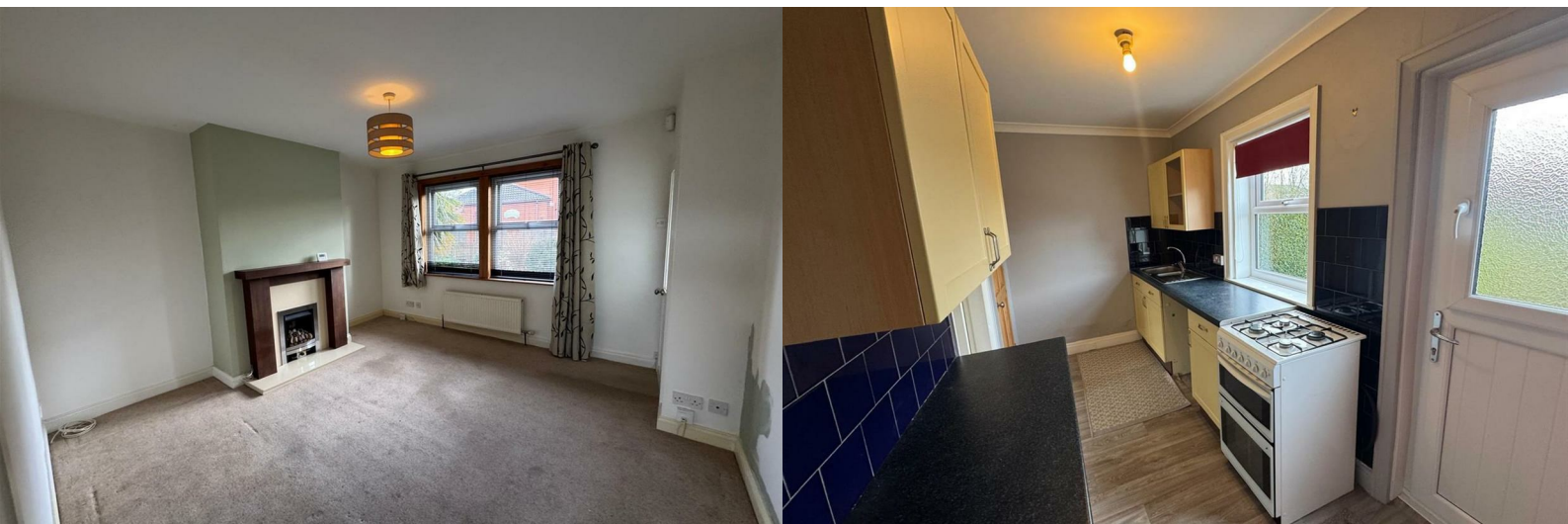




6 Clifton Terrace

, Ossett, WF5 8EQ

£155,000



6 Clifton Terrace

, Ossett, WF5 8EQ

£155,000



*****OPEN TO OFFERS & MOVE IN FOR CHRISTMAS*****

TWO BEDROOM MID TERRACEIDEAL STARTER HOME***OSSETT***NO CHAIN

Tucked away off KINGS WAY, OSSETT is this lovely two bedroom mid terrace property that must be viewed to appreciate the property on offer. Accommodation which comprises of; entrance lobby, lounge, kitchen, two first floor bedrooms and house bathroom. Gardens to the front and rear with the rear being enclosed and a very good size.

*****Contact YORKSHIRE RESIDENTIAL 01924 501333 to arrange the earliest of viewings*****

Entrance Lobby

Radiator.

Lounge

13'3" x 13'6" (4.04m" x 4.11m")

Feature gas fire set into marble inset, hearth and wooden surround. Radiator.

Kitchen

Fitted with a range of wall and base units with gas cooker point. Plumbing for automatic washing machine, utility cupboard and under stairs storage cupboard. Stable door giving access to rear.

Landing

Access to loft.

Double Bedroom 1

12'9" x 13'7" ext to 16'8" (3.89m" x 4.14m" ext to 5.08m")

Radiator and exposed wooden floor boards,

Single Bedroom 2

6'9" x 7' (2.06m" x 2.13m)

Radiator.

House Bathroom

4'2" x 9'10" (1.27m" x 3.00m")

Three piece white suite comprising low level wc, pedestal wash hand basin and bath with shower over and screen. Radiator. Complimentary tiled walls and tiled floor.

Exterior

Lawned garden to the front with a long split level gardens to the rear which is mostly private and enclosed. (Off road parking also to the front but not dedicated)



Road Map



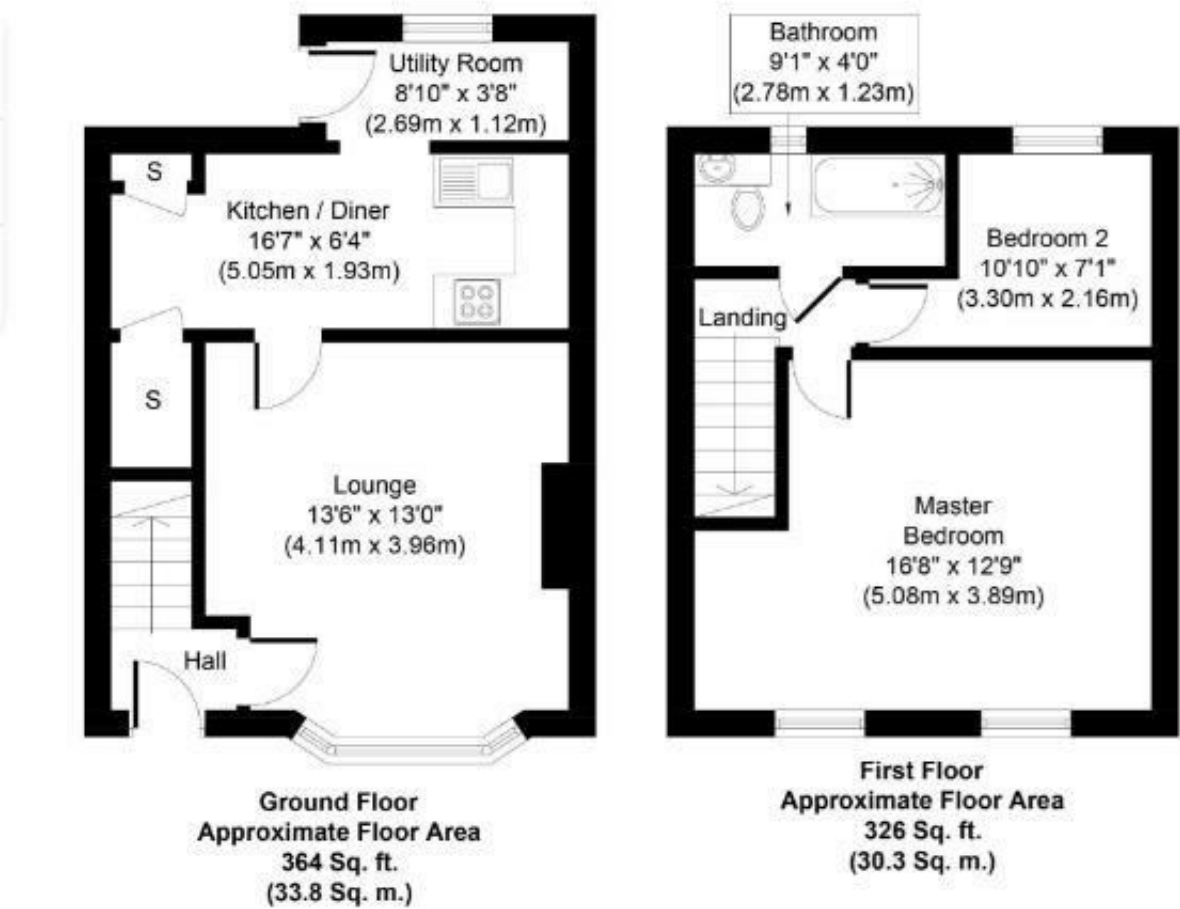
Hybrid Map



Terrain Map



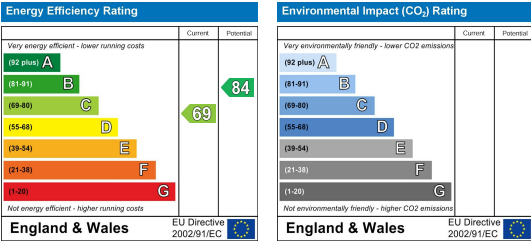
Floor Plan



Viewing

Please contact our Cleckheaton Office on 01924 501333 if you wish to arrange a viewing appointment for this property or require further information.

Energy Efficiency Graph



These particulars, whilst believed to be accurate are set out as a general outline only for guidance and do not constitute any part of an offer or contract. Intending purchasers should not rely on them as statements of representation of fact, but must satisfy themselves by inspection or otherwise as to their accuracy. No person in this firms employment has the authority to make or give any representation or warranty in respect of the property.