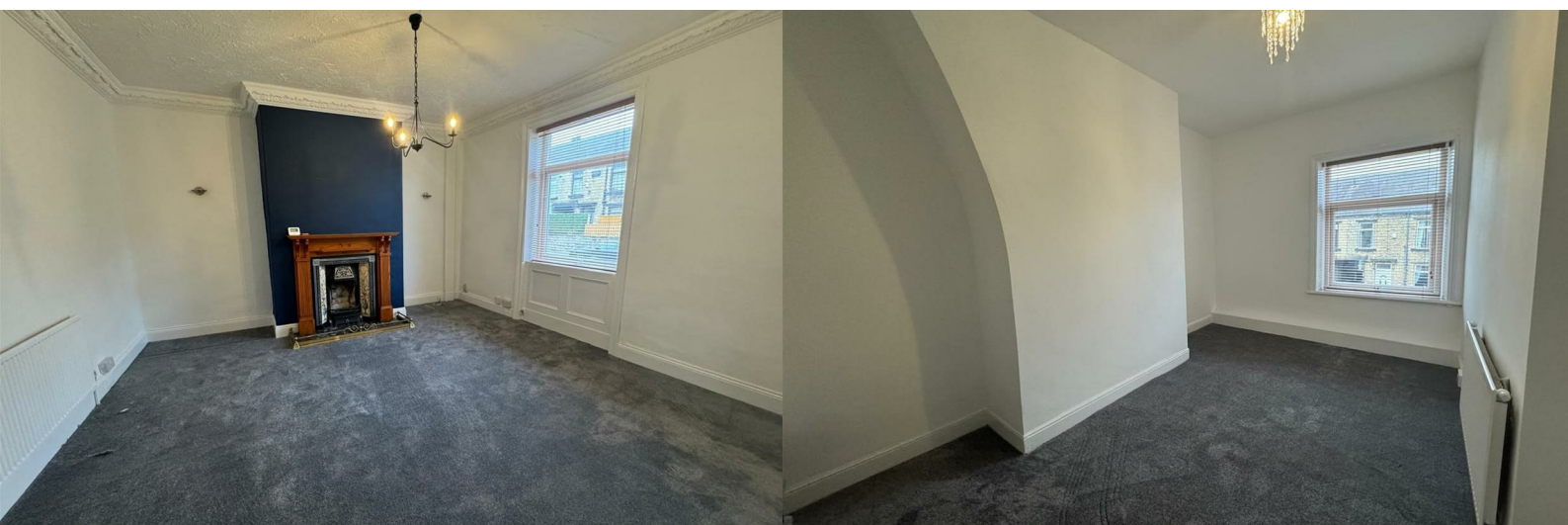




## 39 First Street

Low Moor, Bradford, BD12 0JQ

**£140,000**



# 39 First Street

Low Moor, Bradford, BD12 0JQ

£140,000



\*\*\*3 BEDROOM MID TERRACE\*\*\*SPACIOUS ACCOMMODATION\*\*\*LOW MOOR\*\*\*

Ideal family home, is this spacious 3 bedroom mid terrace that spans over 4 floors and is with in walking distance of LOW MOOR TRAIN STATION. The property has recently been renovated and benefits from new flooring, newly decorated and would make a lovely family home. NO CHAIN & VACANT POSSESSION.\*\*\*\*Contact YORKSHIRE RESIDENTIAL 01274 606167 to arrange a viewing\*\*\*\*

## Entrance Hallway

### Lounge

14'10" x 14'5"

### Basement Kitchen Diner

19'11" x 14'6"

### 1st Floor Landing

Staircase leading to attic bedroom.

### Double Bedroom

15'0" x 7'3"

Radiator.

### Single Bedroom

9'6" x 5'8"

Built in bedroom furniture and radiator.

### Attic Double Bedroom

15'1" x 12'5" (average)

Radiator.

## Exterior





## Road Map



## Hybrid Map



## Terrain Map

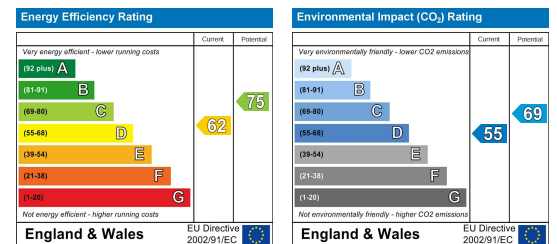


## Floor Plan

## Viewing

Please contact our Mirfield Office on 01924 501333 if you wish to arrange a viewing appointment for this property or require further information.

## Energy Efficiency Graph



These particulars, whilst believed to be accurate are set out as a general outline only for guidance and do not constitute any part of an offer or contract. Intending purchasers should not rely on them as statements of representation of fact, but must satisfy themselves by inspection or otherwise as to their accuracy. No person in this firm's employment has the authority to make or give any representation or warranty in respect of the property.