



FINE & COUNTRY

7 Bedrooms

House - Detached

Located in Highbridge

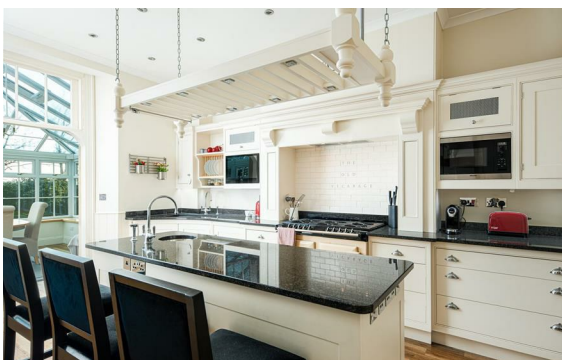
OIEO £1,500,000



Fine & Country Wells and Chew Valley

[www.fineandcountry.com](http://www.fineandcountry.com)

01749 608333



# FINE & COUNTRY

Fine & Country Wells and Chew Valley

Melbourne House  
36 Chamberlain Street  
Wells BA5 2PJ

Wells: 01749 608333  
wells@fineandcountry.com

Chew Valley: 01761 252502  
chew.valley@fineandcountry.com

[www.fineandcountry.com](http://www.fineandcountry.com)

A fine detached Victorian former vicarage, set in gardens of just under acre in the thriving Somerset village of Mark. This well-presented home has been lovingly refurbished by the present owners to an exceptionally high standard and has 5 double bedrooms in the main house and a separate adjoining cottage.

## Energy Efficiency Rating: D

Agents Note: Whilst every care has been taken to prepare these particulars, they are for guidance purposes only. All measurements are approximate and are for general guidance purposes only and whilst every care has been taken to ensure their accuracy, they should not be relied upon and potential buyers/tenants are advised to recheck the measurements.